

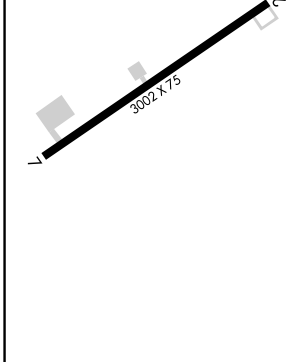
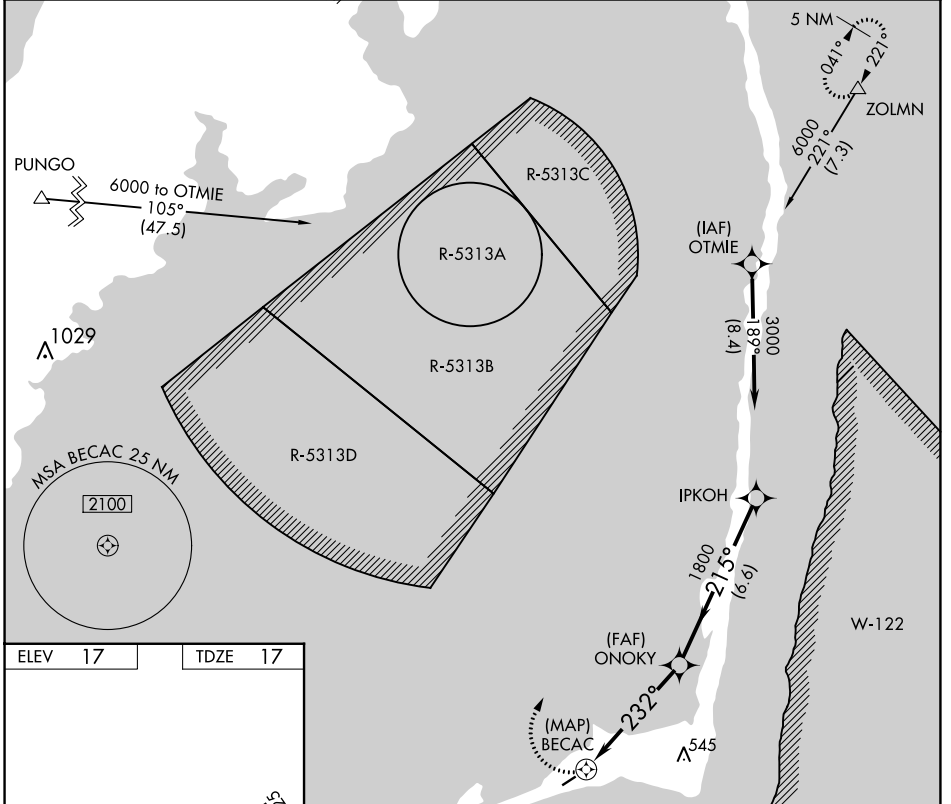
APP CRS	Rwy Idg	3002
232°	TDZE	17
	Apt Elev	17

RNAV (GPS) RWY 25

BILLY MITCHELL (HSE)

<p>NA</p> <p>Procedure NA at night. GPS or RNP-0.3 required. DME/DME RNP-0.3 NA.</p>	<p>MISSED APPROACH: Climbing right turn to 6000 via course 032° to ZOLMN WP and hold.</p>
---	---

<p>ASOS</p> <p>118.375</p>	<p>CHERRY POINT APP CON</p> <p>119.75 360.775</p>	<p>CTAF</p> <p>122.9</p>
-----------------------------------	--	---------------------------------



	<p>6000 ZOLMN</p> <p>crs 032°</p>		<p>IPKOH</p> <p>3000</p>	
	<p>BECAC</p> <p>232°</p> <p>3.00°</p> <p>TCH 40</p>		<p>ONOKY</p> <p>1800</p> <p>215°</p>	
	<p>0.5 5 NM</p>		<p>6.6 NM</p>	
CATEGORY	A	B	C	D
LNAV MDA	520-1	503 (600-1)	520-1½ 503 (600-1½)	NA
CIRCLING	560-1	543 (600-1)	560-1½ 543 (600-1½)	NA

SE-2, 18 APR 2024 to 16 MAY 2024

SE-2, 18 APR 2024 to 16 MAY 2024