

WAAS CH <b>86935</b> <b>W01A</b>	APP CRS <b>009°</b>	Rwy Idg TDZE Apt Elev	<b>5007</b> <b>499</b> <b>499</b>
--	------------------------	-----------------------------	---

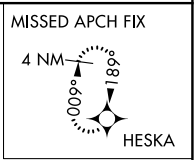
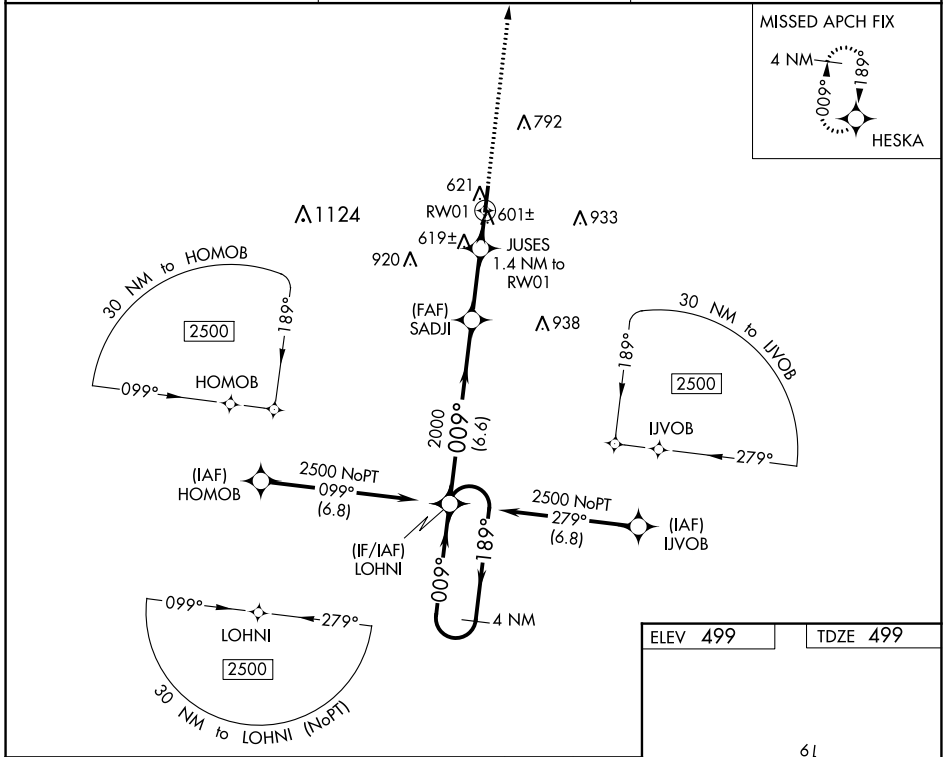
# RNAV (GPS) RWY 1

WILLIAM L WHITEHURST FLD (M08)

**⚠ NA** DME/DME RNP-0.3 NA. When local altimeter setting not received, use Jackson altimeter setting and increase all MDA 80 feet, increase LP Cats C/D visibilities  $\frac{3}{8}$  mile, and LNAV Cats C/D and Circling Cats C/D visibilities  $\frac{1}{4}$  mile. Rwy 1 helicopter visibility reduction below 1 SM NA.

MISSED APPROACH: Climb to 2500 direct HESKA and hold.

AWOS-3 <b>121.125</b>	MEMPHIS CENTER <b>124.35 318.1</b>	UNICOM <b>123.0 (CTAF)</b>
--------------------------	---------------------------------------	-------------------------------



SE-1, 18 APR 2024 to 16 MAY 2024

SE-1, 18 APR 2024 to 16 MAY 2024

4 NM Holding Pattern		Visual Segment - Obstacles.		2500	HESKA
LOHNI		SADJI		JUSES	1.4 NM to RW01
2500 ← 189°		2000		RW01	
009° →		1040		4 NM	
6.6 NM		2.6 NM		1.4 NM	
CATEGORY	A	B	C	D	
LP MDA	860-1		361 (400-1)		
LNAV MDA	880-1	381 (400-1)	880-1 $\frac{1}{8}$	381 (400-1 $\frac{1}{8}$ )	
<b>C</b> CIRCLING	980-1	481 (500-1)	1100-1 $\frac{3}{4}$ 601 (700-1 $\frac{3}{4}$ )	1360-2 $\frac{3}{4}$ 861 (900-2 $\frac{3}{4}$ )	

