

LOC/DME I-EYK <b>111.7</b> Chan <b>54</b>	APP CRS <b>048°</b>	Rwy Idg <b>5500</b> TDZE <b>18</b> Apt Elev <b>19</b>
---	------------------------	---

# ILS or LOC RWY 5

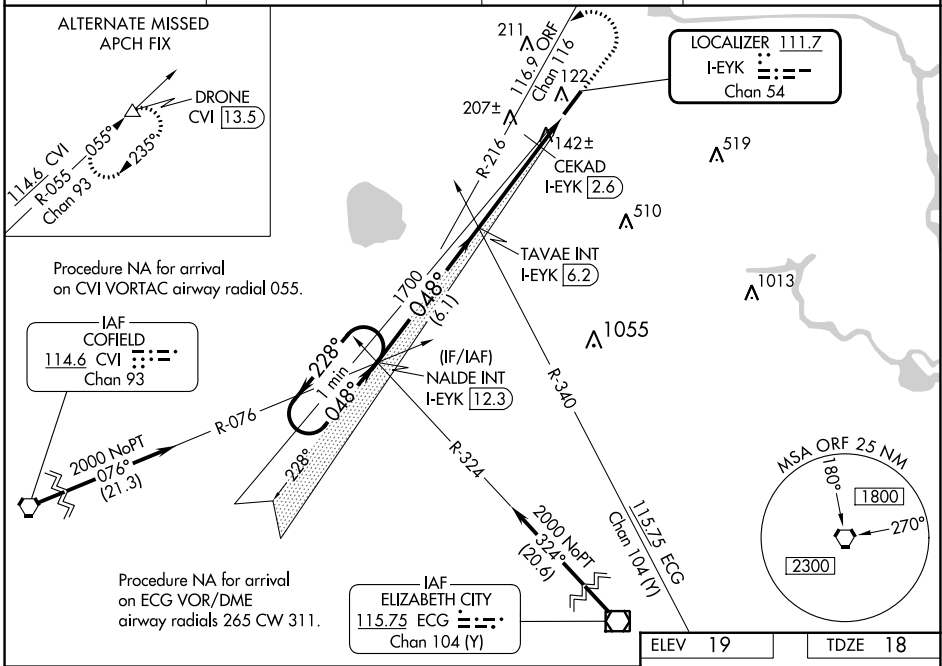
CHESAPEAKE RGNL (CPK)

**⚠** When local altimeter setting not received, use Norfolk Intl altimeter setting and increase all DA 36 feet and all MDA 40 feet; increase CEKAD Fix Minimums S-LOC 5 Cats C and D visibility 1/8 mile. For inoperative MALSR, increase S-LOC 5 Cats C and D visibility to 1 1/8 mile.

**MALSR**

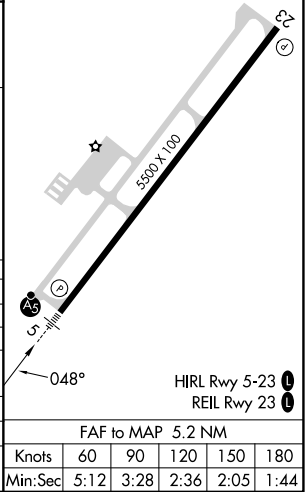
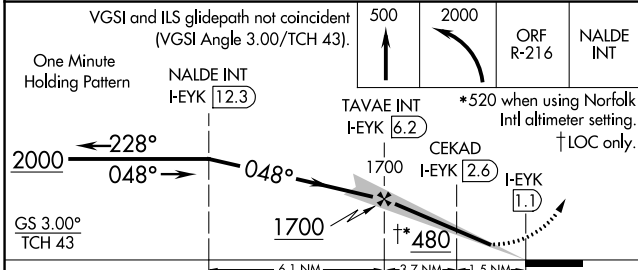
**MISSED APPROACH:** Climb to 500 then climbing left turn to 2000 on ORF VORTAC R-216 to NALDE INT/I-EYK 12.3 DME and hold.

AWOS-3 <b>123.675</b>	NORFOLK APP CON <b>118.9 353.7</b>	GCO <b>135.075</b>	UNICOM <b>123.075 (CTAF) 0</b>
--------------------------	---------------------------------------	-----------------------	-----------------------------------



NE-3, 18 APR 2024 to 16 MAY 2024

NE-3, 18 APR 2024 to 16 MAY 2024



CATEGORY	A	B	C	D
S-ILS 5	218-1/2 200 (200-1/2)			
S-LOC 5	480-1/2	462 (500-1/2)	480-1	462 (500-1)
CIRCLING	480-1	461 (500-1)	520-1/2 501 (600-1/2)	580-2 561 (600-2)
<b>CEKAD FIX MINIMUMS</b>				
S-LOC 5	400-1/2	382 (400-1/2)	400-5/8	382 (400-5/8)
CIRCLING	460-1 441 (500-1)	480-1 461 (500-1)	520-1/2 501 (600-1/2)	580-2 561 (600-2)

FAF to MAP 5.2 NM					
Knots	60	90	120	150	180
Min:Sec	5:12	3:28	2:36	2:05	1:44