

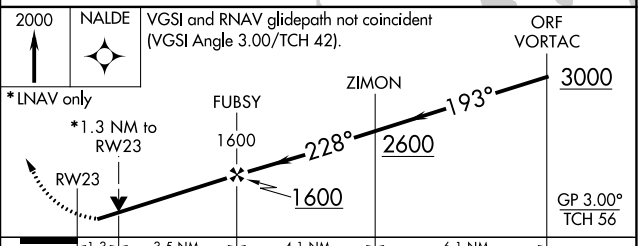
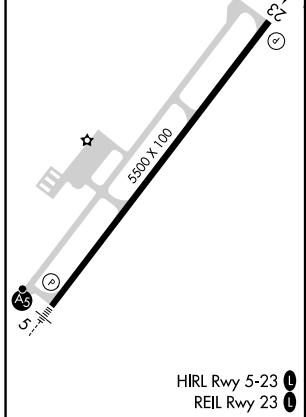
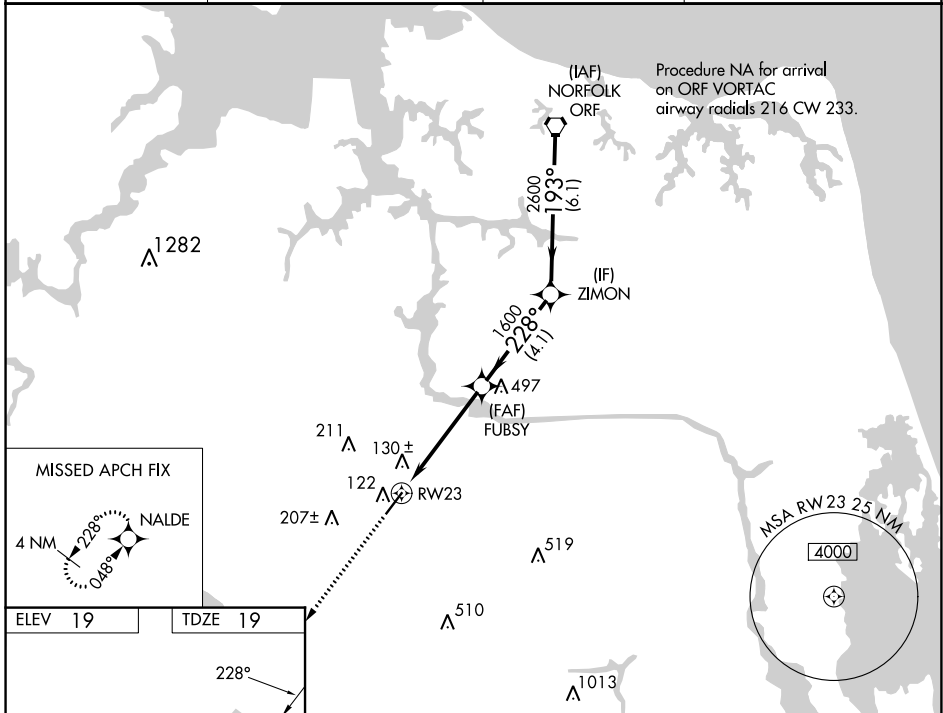
WAAS CH 65922 W23A	APP CRS 228°	Rwy Idg TDZE Apt Elev	5500 19 19
--	------------------------	-----------------------------	---------------------------------------

RNAV (GPS) RWY 23

CHESAPEAKE RGNL (CPK)

RNP APCH.	<p>⚠ Rwy 23 helicopter visibility reduction below 1 SM NA. When local altimeter setting not received, use Norfolk Intl altimeter setting and increase all DA 36 feet and all MDA 40 feet. Baro-VNAV and YDP NA with Norfolk Intl altimeter setting. For uncompensated Baro-VNAV systems, LNAV/VNAV NA below -1.5°C or above 43°C.</p>	MISSED APPROACH: Climb to 2000 direct NALDE and hold.
-----------	--	---

AWOS-3 123.675	NORFOLK APP CON 118.9 353.7	GCO 135.075	UNICOM 123.075 (CTAF) 0
--------------------------	---------------------------------------	-----------------------	-----------------------------------



CATEGORY	A	B	C	D
LPV DA	311-1 292 (300-1)			
LNAV/VNAV DA	312-1 293 (300-1)			
LNAV MDA	480-1 461 (500-1)		480-1 $\frac{3}{8}$ 461 (500-1 $\frac{3}{8}$)	

NE-3, 18 APR 2024 to 16 MAY 2024

NE-3, 18 APR 2024 to 16 MAY 2024