

VOR/DME HYK 112.6 Chan 73	APP CRS 161°	Rwy Idg TDZE Apt Elev	5001 978 1003
---	------------------------	-----------------------------	--

VOR RWY 18

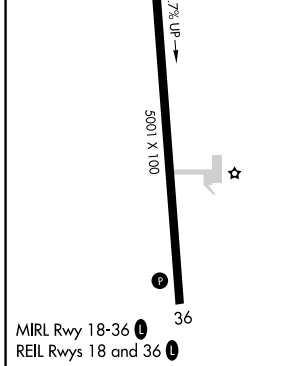
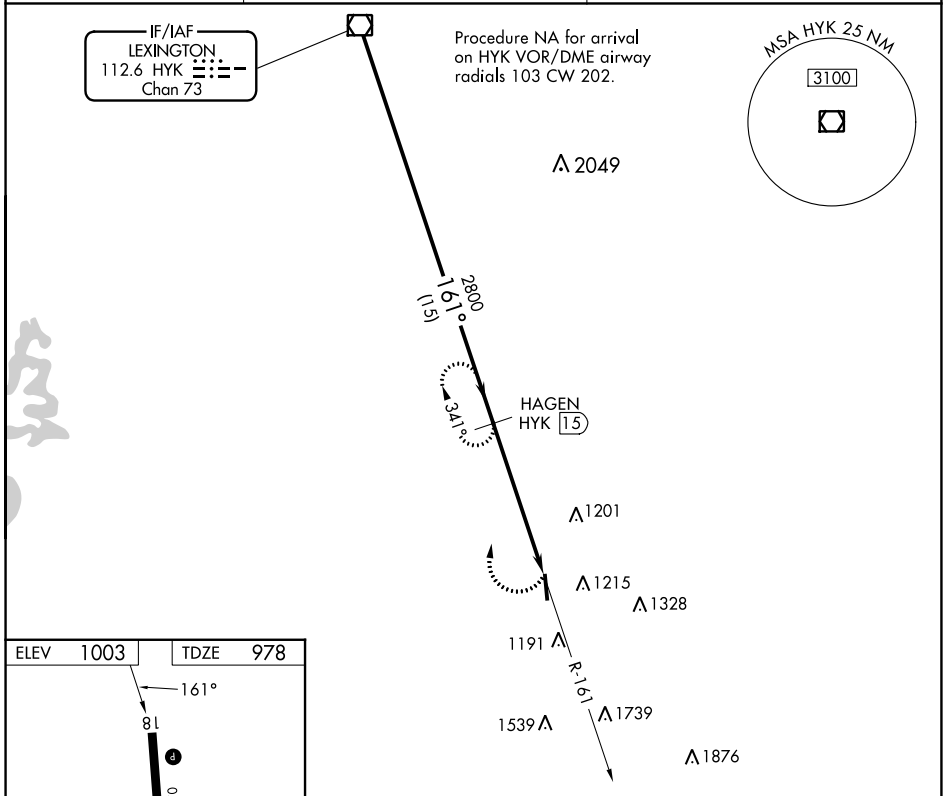
CENTRAL KENTUCKY RGNL (R.G.A)

DME required.

⚠ When local altimeter setting not received, use Lexington altimeter setting and increase all MDA 80 feet; increase S-18 Cats C and D visibility ¼ SM; Circling Cat C ½ SM and Circling Cat D ¼ SM.

⚠ MISSED APPROACH: Climbing right turn to 2800 on HYK VOR/DME R-161 to HAGEN/15 DME and hold.

AWOS-3 119.625	LEXINGTON APP CON 120.15 259.3	UNICOM 122.725 (CTAF) 0
--------------------------	--	-----------------------------------



	HYK VOR/DME		HAGEN HYK 15		HAGEN HYK 15	
	2800		2800		HYK R-161	
	161°		2.95°		TCH 40	
	15 NM		5.7 NM			
CATEGORY	A	B	C	D		
S-18	1460-1	482 (500-1)	1460-1⅓	482 (500-1⅓)		
C CIRCLING	1460-1 457 (500-1)	1520-1 517 (600-1)	1520-1½ 517 (600-1½)	1780-2½ 777 (800-2½)		

SE-1, 18 APR 2024 to 16 MAY 2024

SE-1, 18 APR 2024 to 16 MAY 2024