

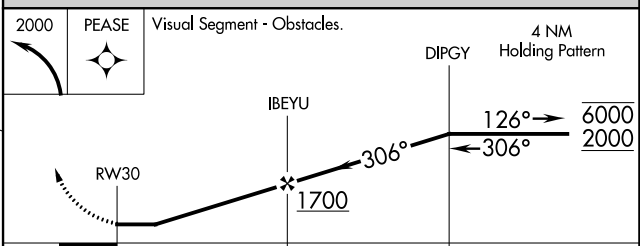
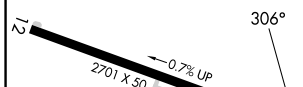
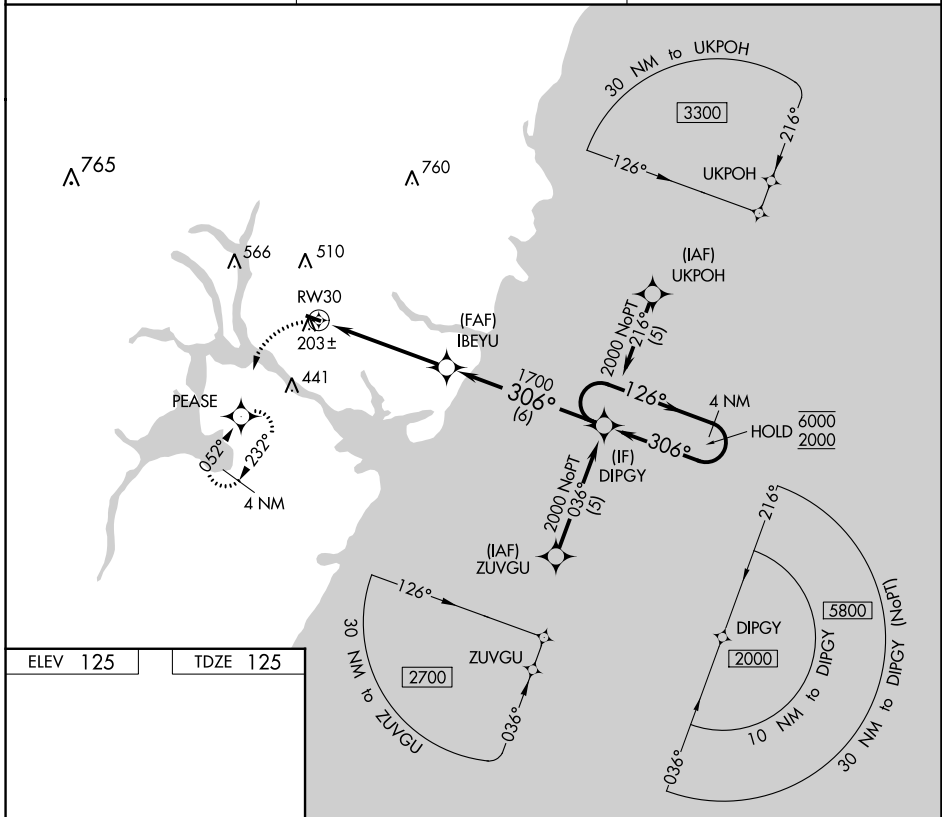
APP CRS	Rwy Idg	2615
306°	TDZE	125
	Apt Elev	125

RNAV (GPS) RWY 30

SEACOAST AIRFIELD (3B4)

RNP APCH.	MISSED APPROACH: Climbing left turn to 2000 direct PEASE and hold, continue climb-in-hold to 2000.
<p>▼ Procedure NA at night. Rwy 30 helicopter visibility reduction below 1 SM NA. Use Portsmouth altimeter setting.</p> <p>▲ NA</p>	

PSM ASOS 132.05 273.5	BOSTON APP CON 125.05 269.4	CTAF 122.9
---------------------------------	---------------------------------------	----------------------



CATEGORY	A	B	C	D
LNAV MDA	580-1	455 (500-1)		NA
CIRCLING	700-1 575 (600-1)	880-1 755 (800-1)		NA

LIRL Rwy 12-30
ELIOT, MAINE
Amdt 1 17JUN21

43°09'N-70°46'W

SEACOAST AIRFIELD (3B4)

RNAV (GPS) RWY 30

NE-1, 18 APR 2024 to 16 MAY 2024

NE-1, 18 APR 2024 to 16 MAY 2024