

TITUSVILLE, FLORIDA

AL-8000 (FAA)

23054

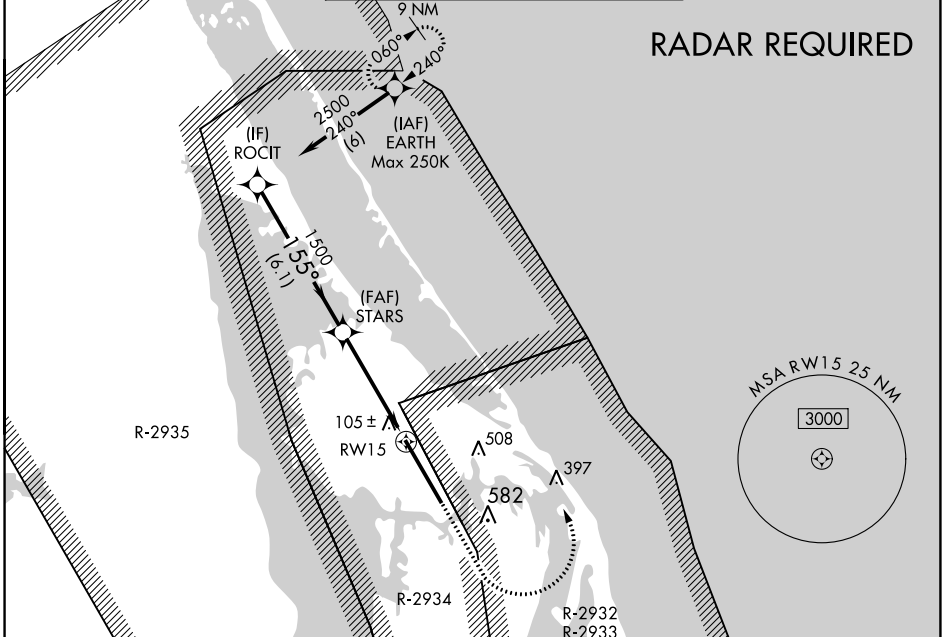
WAAS CH <b>50534</b> <b>W15A</b>	APP CRS <b>155°</b>	Rwy Idg <b>15001</b> TDZE <b>8</b> Apt Elev <b>9</b>
--	------------------------	--

# RNAV (GPS) RWY 15

SPACE FLORIDA LAUNCH AND LANDING FACILITY (TTS)

<p>For uncompensated Baro-VNAV systems, LNAV/VNAV NA below -15°C (5°F) or above 54°C (130°F). DME/DME RNP-0.3 NA. Inop table does not apply.</p>	ALS-2	MISSED APPROACH: Climb to 800, then climbing left turn to 2500 direct EARTH and hold.

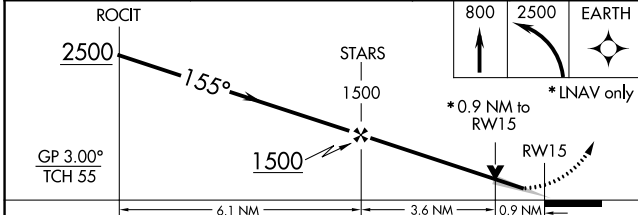
ORLANDO APP CON <b>134.95 281.425</b>	NASA TOWER ★ <b>128.55 (CTAF) 284.0</b>	GND CON <b>121.75</b>
--	--	--------------------------



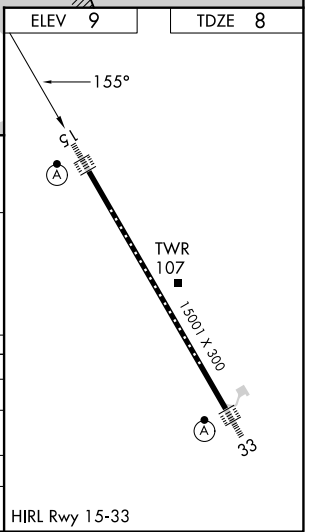
SE-3, 18 APR 2024 to 16 MAY 2024

SE-3, 18 APR 2024 to 16 MAY 2024

ELEV 9	TDZE 8
--------	--------



CATEGORY	A	B	C	D	E
LPV DA		208-1	200 (200-1)		
LNAV/VNAV DA		286-1	278 (300-1)		
LNAV MDA		360-1	352 (400-1)		
CIRCLING	420-1 411 (500-1)	460-1 451 (500-1)	940-2¾ 931 (1000-2¾)	940-3	931 (1000-3)



TITUSVILLE, FLORIDA  
Amdt 1A 25MAY17

SPACE FLORIDA LAUNCH AND LANDING FACILITY (TTS)  
28°37'N-80°42'W

# RNAV (GPS) RWY 15