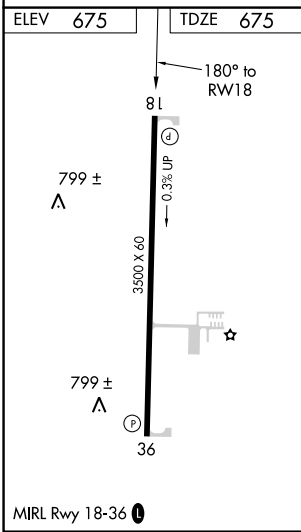
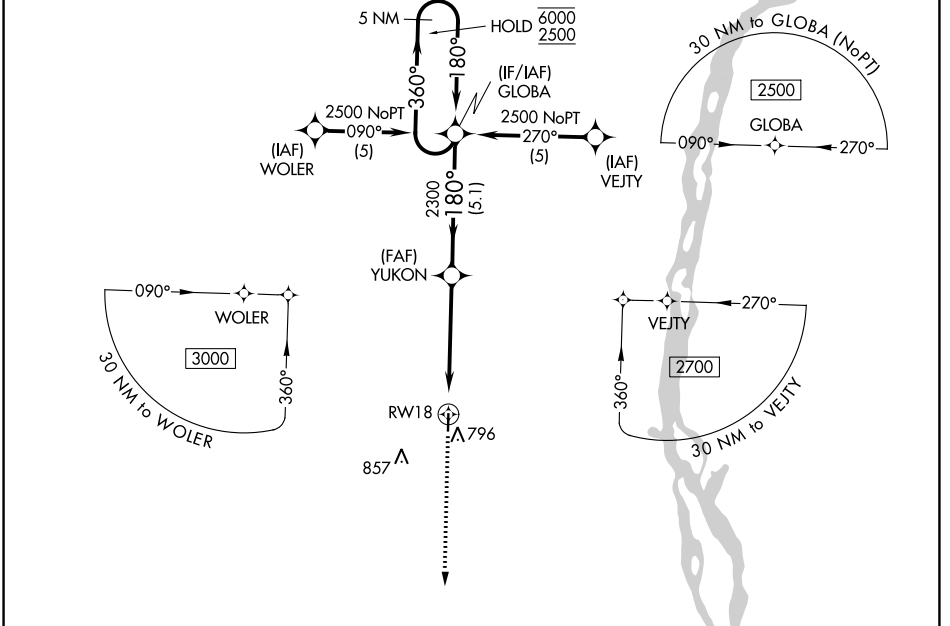


WAAS CH <b>50401</b> <b>W18A</b>	APP CRS <b>180°</b>	Rwy Idg TDZE Apt Elev	<b>3500</b> <b>675</b> <b>675</b>
--	------------------------	-----------------------------	---

# RNAV (GPS) RWY 18

LEWIS COUNTY RGNL (6M6)

RNP APCH.		MISSED APPROACH: Climb to 2300 direct GRITE and hold.	
UIN ASOS <b>121.425</b>	KANSAS CITY CENTER <b>126.225 317.775</b>	UNICOM <b>122.7 (CTAF) 0</b>	



ELEV 675	TDZE 675	GRITE 4 NM Holding Pattern	
799 ±	799 ±	YUKON 2300	GLOBA 4 NM Holding Pattern
8 L	36	2300	6000 / 2500
3500 X 60		4.9 NM	5.1 NM
			GP 3.00° TCH 40
MIRL Rwy 18-36			
CATEGORY	A	B	C
LPV DA	1035-1¼	360 (400-1¼)	NA
LNAV/VNAV DA	1082-1½	407 (500-1½)	NA
LNAV MDA	1220-1	545 (600-1)	NA

NC-3, 18 APR 2024 to 16 MAY 2024

NC-3, 18 APR 2024 to 16 MAY 2024