

WAAS CH 90321 W29A	APP CRS 292°	Rwy Idg TDZE Apt Elev	5100 3231 3255
--	------------------------	-----------------------------	---

RNAV (GPS) RWY 29

STURGIS MUNI (49B)

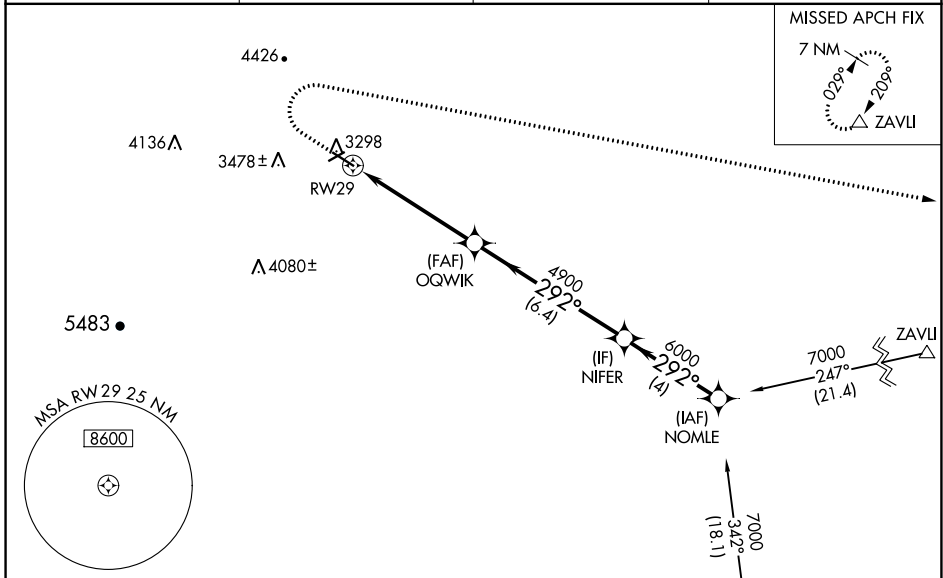
RNP APCH.

Baro-VNAV NA. Use Ellsworth AFB altimeter setting, when not received, use Spearfish altimeter setting and increase all DA 87 feet and all MDA 100 feet and increase LPV Cat A/B visibility 1/4 mile, and LPV (with climb gradient) Cat C visibility 1/2 mile.

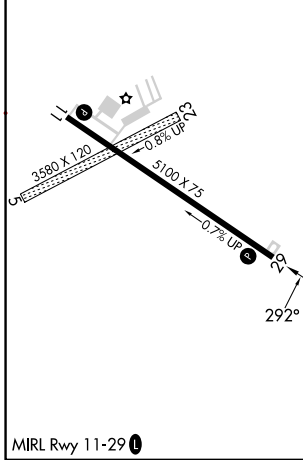
*Missed approach requires minimum climb of 364 feet per NM to 4900.

MISSED APPROACH: Climb to 3700 then climbing right turn to 7000 direct ZAVLI and hold.

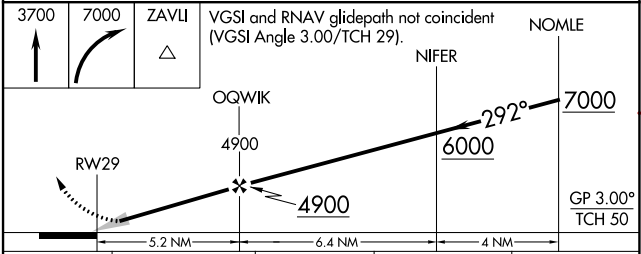
AWOS-3P 119.275	ELLSWORTH APP CON * 119.5 259.1	GCO 121.725	UNICOM 122.8 (CTAF)
---------------------------	---	-----------------------	-------------------------------



ELEV 3255	TDZE 3231
-----------	-----------



Procedure NA for arrivals at RAP VORTAC on airway radials 252 CW 072.



CATEGORY	A	B	C	D
LPV DA*	3532-1 301 (300-1)			NA
LPV DA	3532-1 301 (300-1)		4073-3 842 (900-3)	NA
LNAV/VNAV DA	3532-1 301 (300-1)		3986-3 755 (800-3)	NA
LNAV MDA	3640-1 409 (400-1)		4280-3 1049 (1100-3)	NA

NC-1, 18 APR 2024 to 16 MAY 2024

NC-1, 18 APR 2024 to 16 MAY 2024