

WAAS CH 63233 W35A	APP CRS 359°	Rwy Idg TDZE Apt Elev	5010 990 1010
--	------------------------	-----------------------------	--

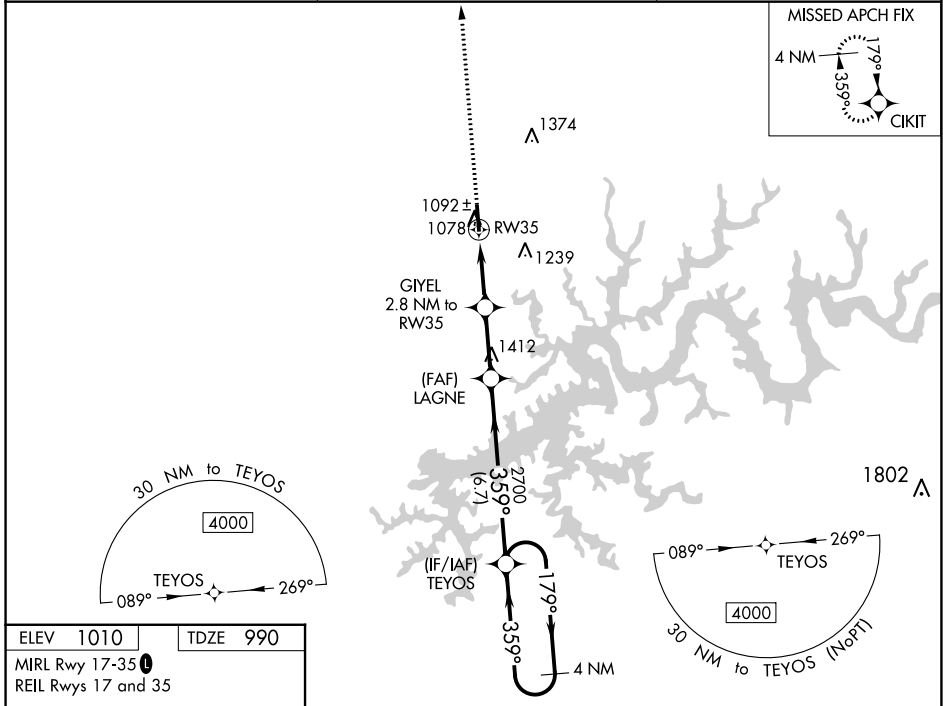
RNAV (GPS) RWY 35

RUSSELL COUNTY (K24)

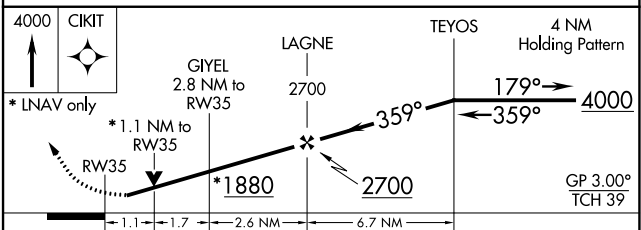
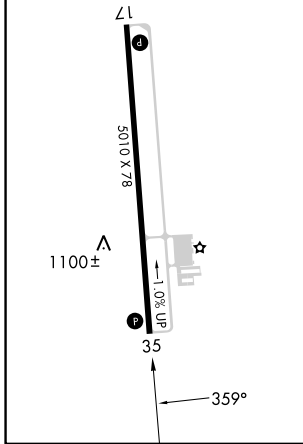
⚠ For uncompensated Baro-VNAV systems, LNAV/VNAV NA below -17°C (2°F) or above 54°C (130°F). DME/DME RNP-0.3 NA. Baro-VNAV and VDP NA when using Wayne County altimeter setting. When local altimeter setting not received, use Wayne County altimeter setting and increase all DA 42 feet and all MDA 60 feet. Increase LPV all Cats visibility ¼ mile and LNAV/VNAV all Cats visibility ⅜ mile and Circling Cat C/D visibility ¼ mile. Helicopter visibility reduction below ⅜ mile NA.

⚠ NA MISSED APPROACH: Climb to 4000 direct CIKIT and hold.

AWOS-3 119.6	INDIANAPOLIS CENTER 124.625 371.925	UNICOM 123.0 (CTAF) 0
------------------------	---	---------------------------------



ELEV 1010	TDZE 990
MIRL Rwy 17-35	
REIL Rws 17 and 35	



CATEGORY	A	B	C	D
LPV DA		1240-7/8	250 (300-7/8)	
LNAV/VNAV DA		1285-1 1/8	295 (300-1 1/8)	
LNAV MDA		1360-1	370 (400-1)	
C CIRCLING	1540-1 530 (600-1)	1620-1 610 (700-1)	1700-2 690 (700-2)	1700-2 1/4 690 (700-2 1/4)

SE-1, 18 APR 2024 to 16 MAY 2024

SE-1, 18 APR 2024 to 16 MAY 2024