

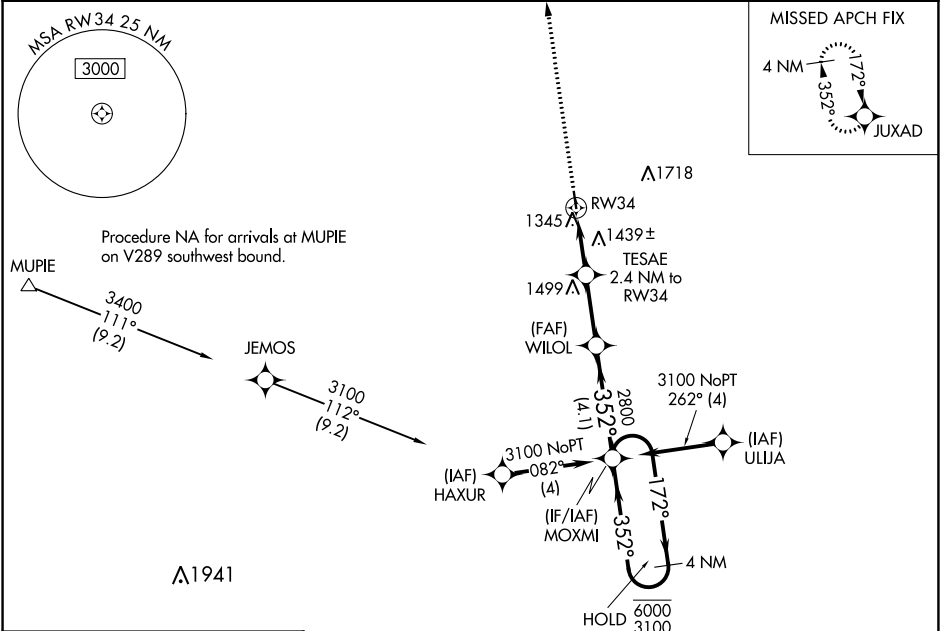
WAAS CH <b>72728</b> <b>W34A</b>	APP CRS <b>352°</b>	Rwy Idg TDZE Apt Elev	<b>3500</b> <b>1191</b> <b>1195</b>
--	------------------------	-----------------------------	---

# RNAV (GPS) RWY 34

HOUSTON MEML (M48)

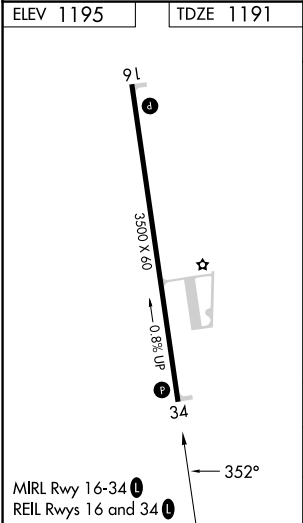
RNP APCH-GPS.	MISSED APPROACH: Climb to 3400 direct JUXAD and hold.
<p>Baro-VNAV NA. Use Fort Leonard Wood altimeter setting, when not received use West Plains altimeter setting.</p>	

TBN ASOS <b>118.7 229.4</b>	KANSAS CITY CENTER <b>128.35 284.675</b>	CTAF <b>122.9 0</b>
--------------------------------	---	------------------------



NC-3, 18 APR 2024 to 16 MAY 2024

NC-3, 18 APR 2024 to 16 MAY 2024



3400 JUXAD	VGSI and RNAV glidepath not coincident (VGSI Angle 4.00/TCH 39).		MOXMI 4 NM Holding Pattern
↑	WILOL 2800	TESAE 2.4 NM to RW34	172° → 6000 ← 352° 3100
→	1980	2800	GP 3.00° TCH 40
	2.4 NM	2.6 NM	4.1 NM
CATEGORY	A	B	C
LPV DA	1509-1	318 (400-1)	NA
LNAV/VNAV DA	1740-1 <sup>5</sup> / <sub>8</sub>	549 (600-1 <sup>5</sup> / <sub>8</sub> )	NA
LNAV MDA	1740-1	549 (600-1)	NA
CIRCLING	1760-1 565 (600-1)	1880-1 685 (700-1)	NA