

| | | |
|-------------|----------|-------------|
| APP CRS | Rwy Idg | 4300 |
| 097° | TDZE | 135 |
| | Apt Elev | 135 |

RNAV (GPS) RWY 10

TAPPAHANNOCK/ESSEX COUNTY (XSA)

RNP APCH - GPS.

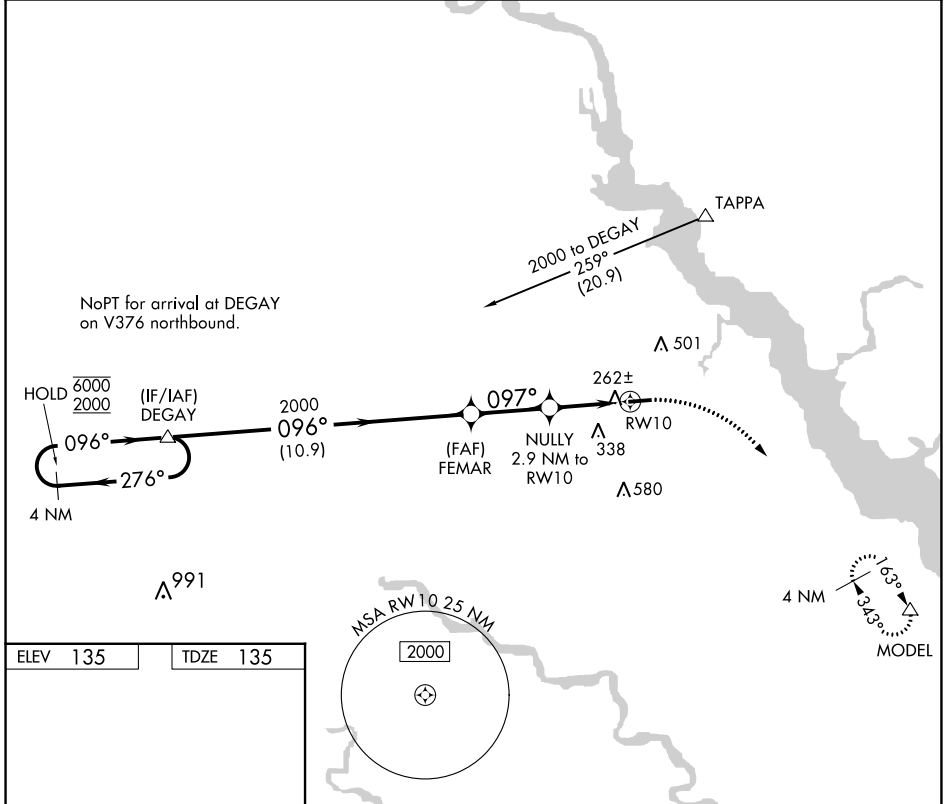
⚠ Rwy 10 helicopter visibility reduction below 3/4 SM NA.

MISSED APPROACH: Climbing right turn to 2000 direct MODEL and hold.

AWOS-3
125.775

POTOMAC APP CON
126.4 282.375

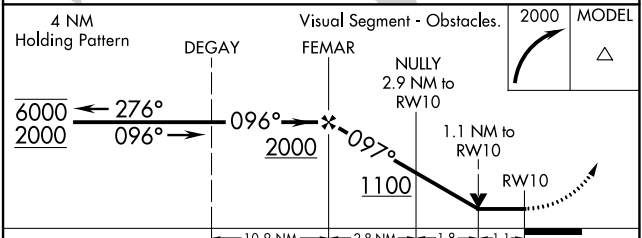
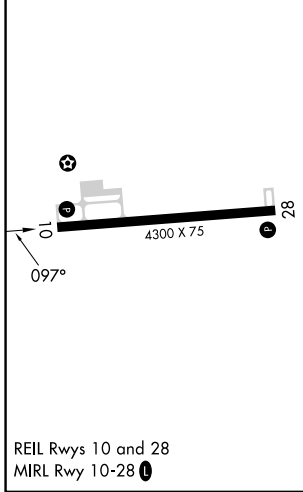
UNICOM
122.8 (CTAF) 0



NE-3, 18 APR 2024 to 16 MAY 2024

NE-3, 18 APR 2024 to 16 MAY 2024

| | |
|----------|----------|
| ELEV 135 | TDZE 135 |
|----------|----------|



| CATEGORY | A | B | C | D |
|-------------------|----------------------|----------------------|----------------------|----|
| LNAV MDA | 540-1 | 405 (500-1) | NA | |
| C CIRCLING | 580-1 445 (500-1) | 640-1 505 (600-1) | 820-2 685 (700-2) | NA |