

| | | |
|--|------------------------|---|
| WAAS CH 77619 W18A | APP CRS 183° | Rwy Idg TDZE 3326 Apt Elev 3326 |
|--|------------------------|---|

RNAV (GPS) RWY 18

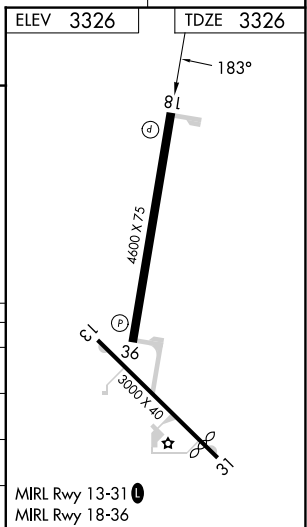
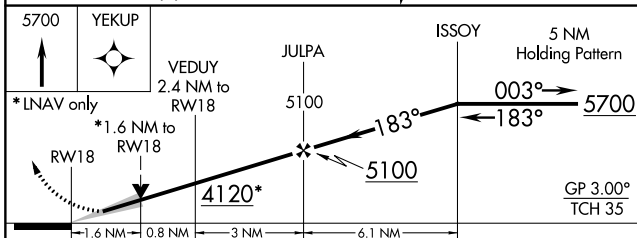
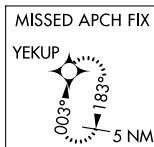
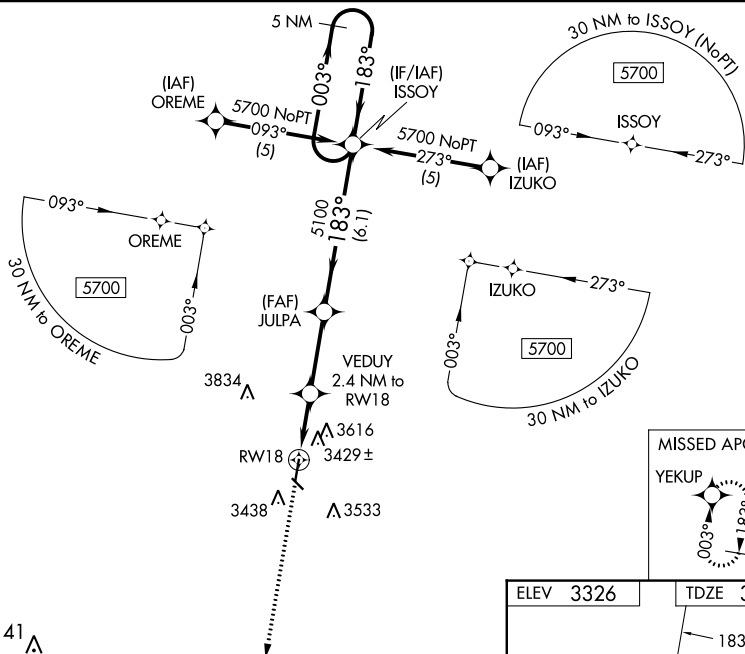
SYRACUSE-HAMILTON COUNTY MUNI (3K3)

RNP APCH-GPS.

⚠ Baro-VNAV NA when using Lamar altimeter setting. For uncompensated Baro-VNAV systems, LNAV/VNAV NA below -21°C (-5°F) or above 54°C (130°F). When local altimeter setting not received, use Lamar altimeter setting; increase LPV DA to 3730 feet and all visibilities ½ SM; increase LNAV/VNAV DA to 4093 feet and all visibilities ¾ SM; increase all MDAs 160 feet and visibility Circling Cat A/B ¼ SM and LNAV Cat C and Circling Cat C ½ SM. VDP NA when using Lamar altimeter setting. Circling to Rwy 13/31 NA at night.

MISSED APPROACH:
Climb to 5700 direct YEKUP and hold.

| | | |
|--------------------------|---------------------------------------|---------------------------------|
| AWOS-3 119.975 | DENVER CENTER 133.4 377.175 | UNICOM 122.8 (CTAF) 0 |
|--------------------------|---------------------------------------|---------------------------------|



| CATEGORY | A | B | C | D |
|--------------|----------------------|----------------------|---|----|
| LPV DA | 3576-1 250 (300-1) | | | NA |
| LNAV/VNAV DA | 3939-2¼ 613 (700-2¼) | | | NA |
| LNAV MDA | 3860-1 534 (600-1) | 3860-1½ 534 (600-1½) | | NA |
| CIRCLING | 3980-1 654 (700-1) | 4200-2½ 874 (900-2½) | | NA |

NC-2, 18 APR 2024 to 16 MAY 2024

NC-2, 18 APR 2024 to 16 MAY 2024