

WAAS CH 42619 W36A	APP CRS 003°	Rwy Idg TDZE Apt Elev	4600 3318 3326
----------------------------------------	------------------------	-----------------------------	-------------------------------------------

RNAV (GPS) RWY 36

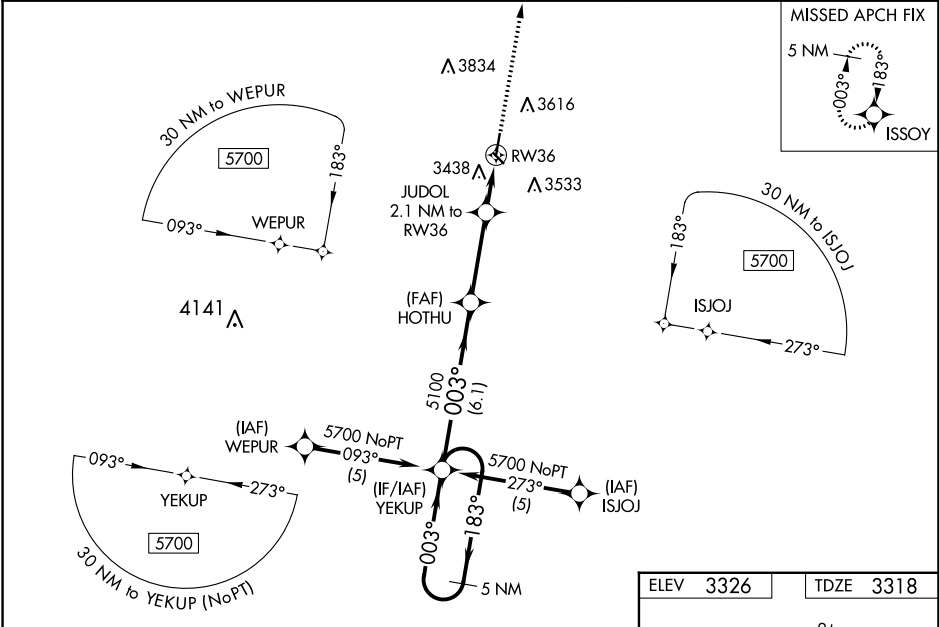
SYRACUSE-HAMILTON COUNTY MUNI (3K3)

RNP APCH-GPS.

⚠ Baro-VNAV NA when using Lamar altimeter setting. For uncompensated Baro-VNAV systems, LNAV/VNAV NA below -21°C (-5°F) or above 54°C (130°F). Helicopter visibility reduction below ¾ SM NA. Circling to Rwy 13-31 NA at night. VDP NA with Lamar altimeter setting. When local altimeter setting not received, use Lamar altimeter setting: increase LPV DA to 3723 feet and all visibilities ½ SM; increase LNAV/VNAV DA to 3932 feet and all visibilities ¾ SM; increase all MDAs 160 feet and visibility Circling Cat A/B ¼ SM and LNAV Cat C and Circling Cat C ½ SM.

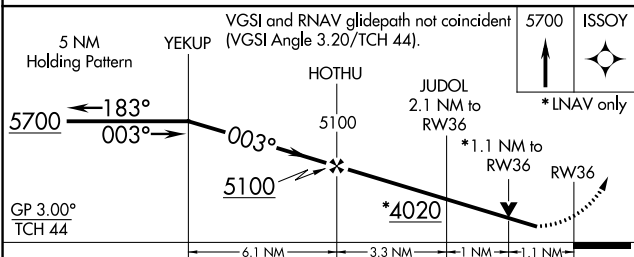
MISSED APPROACH:
Climb to 5700 direct ISSOY and hold.

AWOS-3 119.975	DENVER CENTER 133.4 377.175	UNICOM 122.8 (CTAF) 0
--------------------------	---------------------------------------	---------------------------------

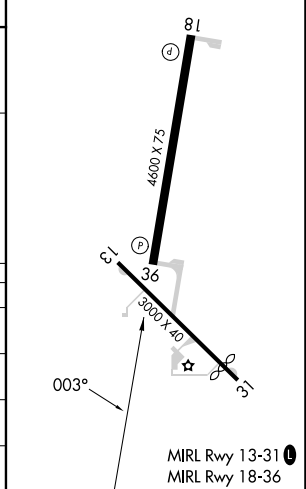


NC-2, 18 APR 2024 to 16 MAY 2024

NC-2, 18 APR 2024 to 16 MAY 2024



ELEV 3326	TDZE 3318
-----------	-----------



CATEGORY	A	B	C	D
LPV DA	3569-1 251 (300-1)			NA
LNAV/VNAV DA	3778-1¾ 460 (500-1¾)			NA
LNAV MDA	3740-1	422 (500-1)	3740-1¼ 422 (500-1¼)	NA
CIRCLING	3980-1	654 (700-1)	4200-2½ 874 (900-2½)	NA