

APP CRS 214°	Rwy Idg TDZE Apt Elev	N/A N/A 526
------------------------	-----------------------------	--

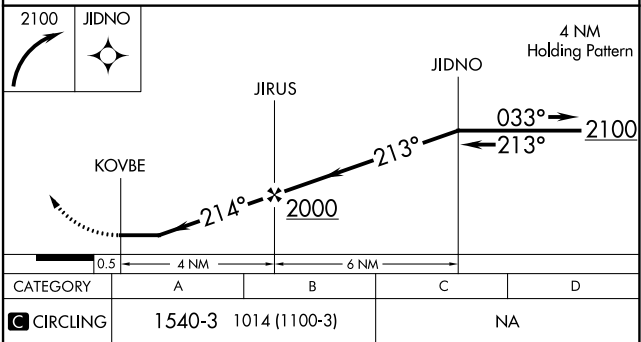
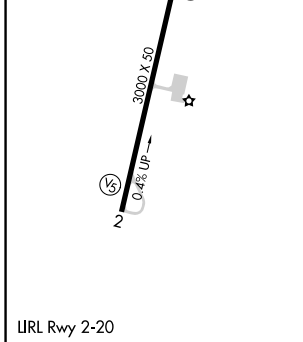
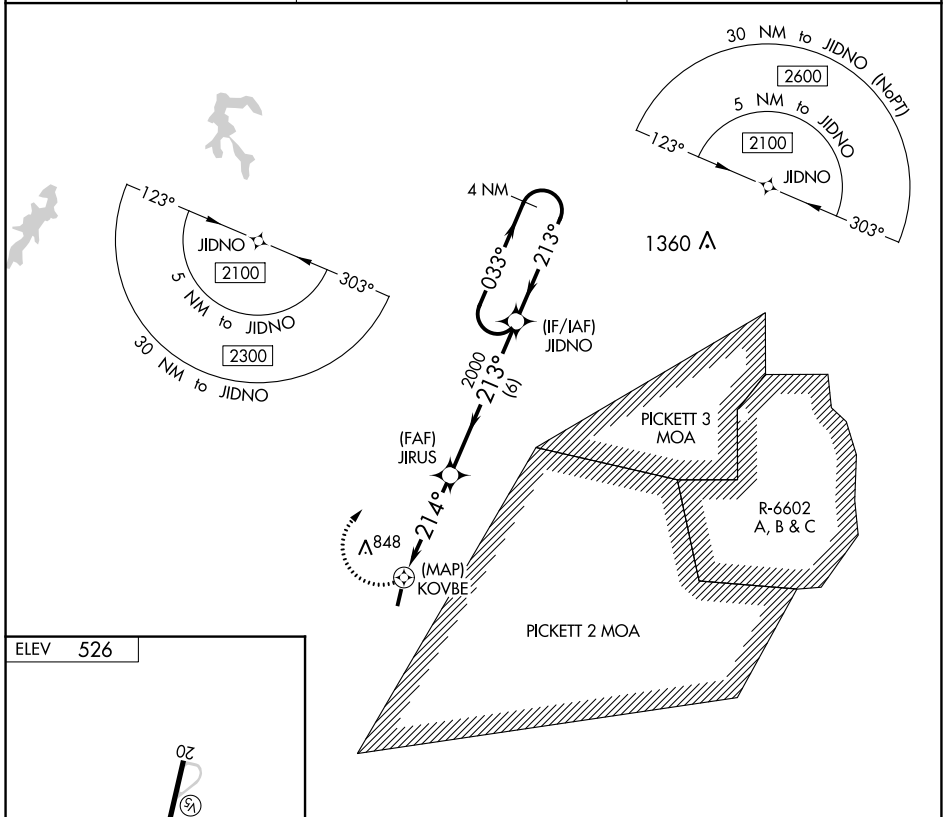
RNAV (GPS)-B

LUNENBURG COUNTY (W31)

⚠ Helicopter visibility reduction below 1 SM NA. DME/DME RNP-0.3 NA. Procedure NA at night. When local altimeter setting not received, use Blackstone altimeter setting and increase all MDA 60 feet.

MISSED APPROACH: Climbing right turn to 2100 direct JIDNO and hold.

AWOS-3 123.875	WASHINGTON CENTER 118.75 377.1	UNICOM 122.7 (CTAF)
--------------------------	--	-------------------------------



NE-3, 18 APR 2024 to 16 MAY 2024

NE-3, 18 APR 2024 to 16 MAY 2024