

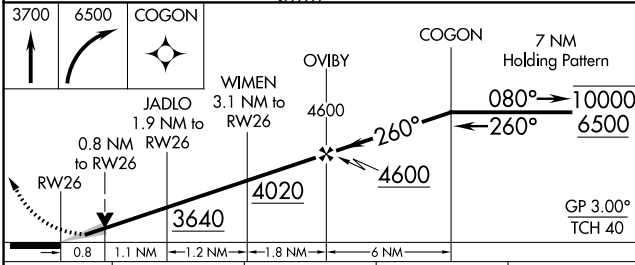
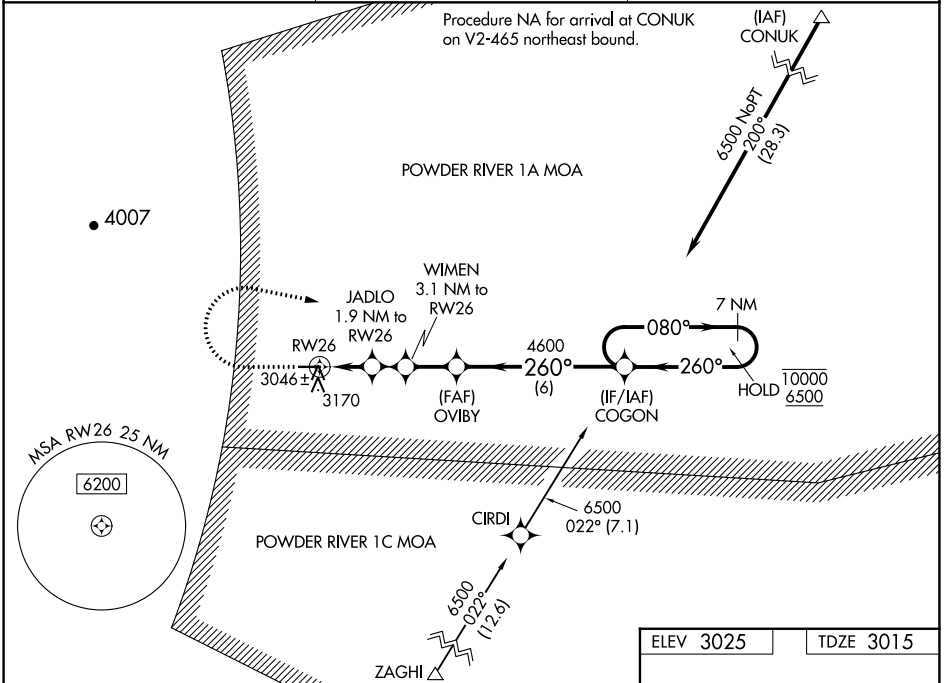
WAAS CH <b>65644</b> <b>W26A</b>	APP CRS <b>260°</b>	Rwy Idg TDZE Apt Elev	<b>4491</b> <b>3015</b> <b>3025</b>
--	------------------------	-----------------------------	---

# RNAV (GPS) RWY 26

BIG HORN COUNTY (ØØU)

RNP APCH-GPS.	MISSED APPROACH: Climb to 3700 then climbing right turn to 6500 direct COGON and hold, continue climb-in-hold to 6500.
<p>⚠ For uncompensated Baro-VNAV systems, LNAV/VNAV NA below -20°C or above 54°C.</p>	

AWOS-3 <b>118.325</b>	SALT LAKE CENTER <b>132.425 317.45</b>	UNICOM <b>122.8 (CTAF) ①</b>
--------------------------	---	---------------------------------



ELEV 3025	TDZE 3015
<p>GP 3.00° TCH 40</p> <p>4491 X 75 → -0.5% UP</p>	
MIRL Rwy 8-26 ①	

CATEGORY	A	B	C	D
LPV DA	3215-1	200 (200-1)		NA
LNAV/VNAV DA	3265-1	250 (300-1)		NA
LNAV MDA	3300-1	285 (300-1)		NA
CIRCLING	3480-1 455 (500-1)	3500-1 475 (500-1)		NA

NW-1, 18 APR 2024 to 16 MAY 2024

NW-1, 18 APR 2024 to 16 MAY 2024