

KENAI

DRIFT RIVER (3AK5) PVT 26 W UTC-9(-8DT) N60°35.33' W152°09.72'

MC GRATH

30 NOTAM FILE

H-1B, 2K, L-1A, 3D, 4F

RWY 05-23: 4100X150 (GRVL) MIRL

RWY 05: Trees.

RWY 23: Trees.

AIRPORT REMARKS: Unattended. Not mntnd. Tank farm and fac unatndd and non-opnl.

AIRPORT MANAGER: 907-283-6108

COMMUNICATIONS: CTAF 122.7 UNICOM 122.8

RADIO AIDS TO NAVIGATION: NOTAM FILE ENA.

KENAI (H) (H) VOR/DME 117.6 ENA Chan 123 N60°36.88' W151°11.71' 248° 28.6 NM to fld. 115/19E.

VOR unusable:

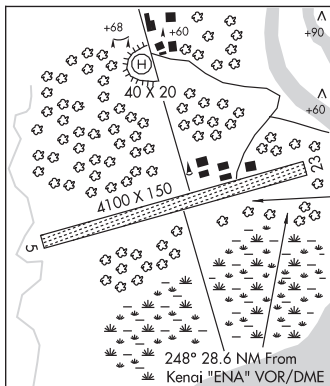
348°-015° byd 20 NM

DME unusable:

355°-041° byd 35 NM blo 2,000'

COMM/NAV/WEATHER REMARKS: For a toll free call to Kenai FSS dial 1-866-864-1737.

HELIPAD H1: 40X20 (GRVL)



ISLAND LAKE SPB (2R3) 9 N UTC-9(-8DT) N60°42.27' W151°18.68'

ANCHORAGE

140 NOTAM FILE ENA

WATERWAY 06W-24W: 5000X500 (WATER)

SEAPLANE REMARKS: Attended Mon-Fri 1700-0200Z±. No trans svcs avbl. Public access/boat ramp at north end of lake. Dock in disrepair.

AIRPORT MANAGER: 907-903-3355

COMMUNICATIONS: CTAF 122.7

COMM/NAV/WEATHER REMARKS: For a toll free call to Kenai FSS dial 1-866-864-1737.

KENAI MUNI (ENA)(PAEN) 0 N UTC-9(-8DT) N60°34.40' W151°14.69'

ANCHORAGE

100 B Class I, ARFF Index A NOTAM FILE ENA

H-1B, 2K, L-1A, 3D, 4F

RWY 02L-20R: H7855X150 (ASPH-GRVD) S-75, D-150, 2D-250

PCN 59 F/B/X/U HIRL

RWY 02L: REIL. VASI(V4L)—GA 3.0° TCH 53'. RVR-R Thld dsplcd 280'. Rgt tfc.

RWY 20R: MALSR. VASI(V4L)—GA 3.0° TCH 51'. RVR-T

RWY 02R-20L: 1980X75 (GRVL)

RUNWAY DECLARED DISTANCE INFORMATION

RWY 02L:TORA-7855 TODA-7855 ASDA-7855 LDA-7575

RWY 20R:TORA-7855 TODA-7855 ASDA-7575 LDA-7575

SERVICE: S2 **FUEL** 100L, **JET A** **LGT** ACTVT REIL Rwy 02L; VASI Rwy 02L & 20R—CTAF. When twr clsd ACTVT and incr instst HIRL Rwy 02L-20R—Kenai FSS. When twr clsd ACTVT MALSR Rwy 20R—CTAF.

NOISE: Noise Abatement arr Rwy 02W and dep Rwy 20W fnl apch and cross wind turns S of beachline unless ATC auth.

AIRPORT REMARKS: Attended Mon-Fri 1700-0200Z±. Birds 10 NM radius spring-fall. Exc wx dvrsn unsked acft over 12,500 lbs 48 hr PPR. Fuel avbl H24 with credit card - 907-283-4542. Ptns of trml ramp, Twy G and H not vsb fm ATCT. Rwy 02R outlined with cones. Rwy 20L outlined with cones. Tsnt and coml tie down slips avbl end of water canal. Tsnt prkg S trml ramp; hel prkg N trml ramp. Rwy 02R-20L not avbl for sked or unsked acf ops more than 30 pax seats. Lndg fec ovr 4000 lb. Twy A, B & E PCN 48; Twy C PCN 59; Twy F PCN 43; Twy D, J, K & L PCN 34. Arpt sand gradation larger than FAA recommended/see AC150/5200-30.

AIRPORT MANAGER: 907-283-7951

WEATHER DATA SOURCES: ASOS 133.35 (907) 283-6513. LAWRS. (WX CAM)

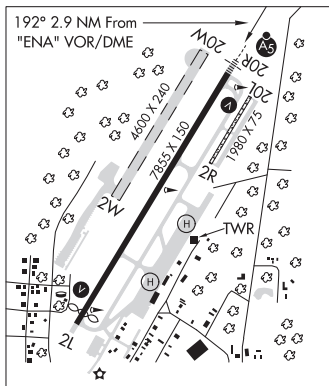
COMMUNICATIONS: CTAF 121.3 ATIS 133.35

FSS ENA (KENAI)

KENAI RADIO 121.3 121.5 122.65 243.0 (LAA 121.3 when twr clsd)

Ⓡ ANCHORAGE CENTER APP/DEP CON 125.7 379.1

TOWER 121.3 (1500-0700Z± May 1-Sep 30; 1600-0600Z± Oct 1-Apr 30) GND CON 118.75



CONTINUED ON NEXT PAGE

AK, 16 MAY 2024 to 11 JUL 2024

CONTINUED FROM PRECEDING PAGE

AIRSPACE: CLASS D svc 1500-0700Z† May 1-Sept 30, 1600-0600Z† Oct 1-Apr 30; other times CLASS E.

RADIO AIDS TO NAVIGATION: NOTAM FILE ENA.

(H) (H) VOR/DME 117.6 ENA Chan 123 N60°36.88' W151°11.71' 192° 2.9 NM to fld. 115/19E.

VOR unusable:

348°-015° byd 20 NM

DME unusable:

355°-041° byd 35 NM blo 2,000'

ILS/DME 108.9 I-ENA Chan 26 Rwy 20R. Class IE.

COMM/NAV/WEATHER REMARKS: Kenai FSS lcl 283-7211. For a toll free call to Kenai FSS dial 1-866-864-1737. Wx avbl from Kenai twr ATIS or from FSS when Kenai twr clsd.

WATERWAY 02W-20W: 4600X240 (WATER)

WATERWAY 20W: Rgt tfc.

SEAPLANE REMARKS: Waterway 02W-20W clsd to ops Nov-Apr; water ldg area not vsb fm ATCT; 02W arr and 20W dep make fnl apch and cross wind turns S of beachline unless auth bt ATC. SPB ctld by Kenai ATCT durg ops hrs. TPA: Rwy 02W/20W 500' AGL. When Kenai ATCT clsd wx avbl fm Kenai ATIS or Kenai FSS. 24 hour credit card fuel avbl, call 907-283-4542. Pat alt 500 ft AGL for seaplane base. Rwy 20W rgt tfc. Water ldg area and twy chnl not vsb fm ATCT.

TREASURE CHEST (AA16) PVT 5 NNW UTC-9(-8DT) N60°37.49' W151°17.67'

SEWARD

125 TPA-825(700) NOTAM FILE Not insp.

RWY 16-34: 2700X100 (GRVL)

RWY 34: Rgt tfc.

RWY 02-20: 1370X100 (GRVL)

AIRPORT REMARKS: Unattended. Rwy 16-34 not mntnd. Ski ops at your own risk. Cond rpt- amgr.

AIRPORT MANAGER: 907-394-3579

COMMUNICATIONS: CTAF 121.3

COMM/NAV/WEATHER REMARKS: Ops annc intns to Salamatoff/Arness tfc-122.7. Ops in Class D/E asp trsn to Treasure Chest-Kenai ATCT CTAF.

KENAI RIVER AIRPARK (See SOLDOTNA on page 225)

KETCHIKAN

KETCHIKAN (TEMSCO H) HELIPORT (17AK) PVT 4 NW UTC-9(-8DT) N55°22.98' W131°44.10'

KETCHIKAN

20 NOTAM FILE

HELIPAD H1: H150X50 (CONC) S-6

SERVICE: S2

HELIPORT REMARKS: Unattended. Private heliport except for emergencies prior permission for use is required. Ctc TEMSCO on 130.3 or phone 907-225-5141 for ldg permission. Helicopter ldg, tkof and opr in seaplane tiedown and pullout area prohibited. Ldg and tkof of wheeled airplanes prohibited. Located NE corner of Peninsula Point Pullout.

AIRPORT MANAGER: 907-225-5141

RADIO AIDS TO NAVIGATION: NOTAM FILE KTN.

CLAM COVE NDB (HW) 396 CMJ N55°20.53' W131°41.45' 307° 2.9 NM to fld. 46/21E.

NDB unusable:

Byd 15 NM

COMM/NAV/WEATHER REMARKS: LC to Ketchikan FSS dial 225-9481. For a LC to Juneau FSS dial 789-7380.

