

PORT ALICE SPB (16K) O S UTC-9(-8DT) N55°47.09' W133°35.65'

KETCHIKAN

00 NOTAM FILE KTN

WATERWAY NW-SE: 10000X1000 (WATER)**SEAPLANE REMARKS:** Unattended. Mountains east and west funnel erratic winds into bay. Bay filled with several commercial fishing vessels.**COMMUNICATIONS:** CTAF 122.9**RADIO AIDS TO NAVIGATION:** NOTAM FILE SIT.**LEVEL ISLAND (H) (H) VOR/DME** 116.5 LVD Chan 112

N56°28.06' W133°04.99' 183° 44.5 NM to fld. 98/20E.

VOR unusable:

020°-050° byd 37 NM

270°-300° byd 25 NM blo 10,000'

301°-321° byd 25 NM blo 7,000'

wx cam avbl at <https://weathercams.faa.gov>

DME unusable:

020°-050° byd 25 NM blo 11,000'

020°-050° byd 37 NM

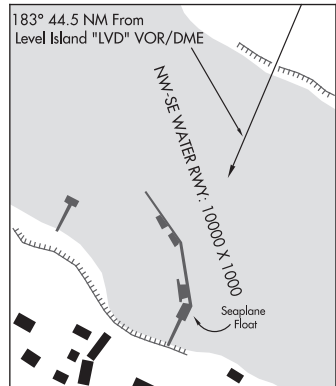
105°-120° byd 29 NM blo 10,000'

121°-135° byd 35 NM blo 7,000'

270°-300° byd 25 NM blo 10,000'

301°-321° byd 25 NM blo 7,000'

345°-350° byd 36 NM blo 8,000'

**COMM/NAV/WEATHER REMARKS:** For a LC to Juneau FSS dial 789-7380.**PORT ALSWORTH****WILDER RUNWAY** (Ø5K)(PAKX) O N UTC-9(-8DT) N60°11.91' W154°19.38'

MC GRATH

288 NOTAM FILE

L-3D

RWY 06R-24L: 3849X100 (GRVL) 0.4% up SW

IAP

RWY 06R: Trees. Rgt tfc.**RWY 24L:** Trees.**SERVICE:** FUEL 100LL, JET A**AIRPORT REMARKS:** Unattended. Rwy soft during spring breakup. Rwy unattended—recommend visual inspection prior to landing. 3000 ft dirt-grvl rwy owned by a separate operator is located 1/4 mile N of and parallel to Rwy 06R-24L.

Minimal winter maintenance. Vehicle traffic crosses approach end of Rwy 24L, not visible from other end of rwy. Rwy 06R-24L outlined on one side only with reflective cones, rwy ends are not marked. Rwy 06R-24L surface: gravel-dirt.

All operations announce on CTAF. Cold temperature airport. Altitude correction required at below -19C.

AIRPORT MANAGER: 907-781-2228**WEATHER DATA SOURCES:** AWOS-3P 118.025 (336) 837-4290. (WX CAM)**COMMUNICATIONS:** CTAF 122.9**ANCHORAGE CENTER APP/DEP CON** 118.8**RADIO AIDS TO NAVIGATION:** NOTAM FILE ILI.**ILLIAMNA NDB/DME (HW)** 411 ILI Chan 91 N59°44.88' W154°54.58' 019° 32.4 NM to fld. 168/14E.

DME unusable:

010°-020° byd 20 NM blo 12,000'

020°-050° byd 25 NM blo 13,000'

270°-300° byd 25 NM blo 7,000'

300°-320° byd 25 NM blo 8,000'

COMM/NAV/WEATHER REMARKS: For a toll free call to Kenai FSS dial 1-866-864-1737.