

**TATALINA LRRS** (TLJ)(PATL) AF 7 S UTC-9(-8DT) N62°53.69' W155°58.68'

**MC GRATH**  
L-3C  
DIAP

933 NOTAM FILE PATL Not insp.

**RWY 17-35:** 3820X150 (GRVL) 1.1% up N

**RWY 17:** REIL. PAPI(P2R)—GA 5.0° TCH 52'. Hill.

**RWY 35:** REIL. PAPI(P2L)—GA 3.0° TCH 40'.

**SERVICE:** **MILITARY**—LGT PAPI Rwy 17 baffled and unusable byd 5° right of centerline.

**MILITARY REMARKS:** Attended 24 hr. CLOSED weekends and holidays. Rwy 17 and 35 2 X 3 ft orange mkr. Rwy 17-35 lateral slope; W edge higher than E edge. Exp turb both ends. After initial ctc expect a 30 min delay for rwy cond. USAF installation; civ ops req Indg pmt bfr arr 907-552-1448/4176. Same day NLT 1 hr PPR bfr dep D317-552-1106/1040, C907-552-1106/1040. Pax req coord bfr non emerg travel to site—D317-552-4400/9630 or C907-552-4400/9630. CALP-D317-552-1448/4176 or in writing—Attn: 11 AF AMGR 10471 20th Street Suite 231 Elmendorf AFD AK 99506.

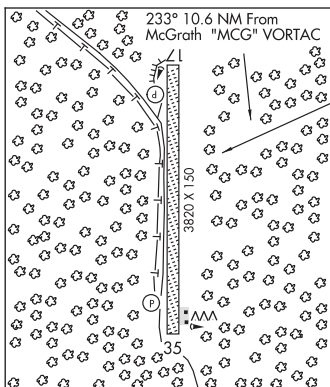
**AIRPORT MANAGER:** 907-552-4400

**WEATHER DATA SOURCES:** AWOS-3 (907) 552-1106 (WX CAM)

**COMMUNICATIONS:** CTAF 126.2

RCO 122.3 (KENAI RADIO)

**COMM/NAV/WEATHER REMARKS:** For a toll free call to Kenai FSS dial 1-866-864-1737.



**TATITLEK** (7KA)(PAKA) O NW UTC-9(-8DT) N60°52.34' W146°41.47'

**ANCHORAGE**  
L-1A, 3D, 4G  
IAP

62 B NOTAM FILE JNU

**RWY 13-31:** 3701X75 (GRVL) MIRL 0.6% up NW

**RWY 13:** Brush.

**RWY 31:** Brush.

**SERVICE:** LGT Actvt MIRL Rwy 13-31—CTAF.

**AIRPORT REMARKS:** Unattended. Rwy cond not mntd; rcmd visual insp prior to Indg. High trrn NW-SE. Rwy 31 sfc slopes up. Rwy 13 thr 45 ft hydr. Rwy 13-31, safety area 150 by 4300 ft; all sides rough with pot holes and lrg rocks. Segmented circles overgrown.

**AIRPORT MANAGER:** 907-835-5658

**COMMUNICATIONS:** CTAF 122.7

VALDEZ RCO 122.2 (JUNEAU RADIO)

Ⓡ ANCHORAGE CENTER APP/DEP CON 119.3

**RADIO AIDS TO NAVIGATION:** NOTAM FILE JNU.

**JOHNSTONE POINT (H) (H) VOR/DME** 116.7 JOH Chan 114

N60°28.86' W146°35.96' 335° 23.7 NM to fld. 48/18E.

wx cam

VOR unusable:

090°-124° byd 23 NM blo 8,000'

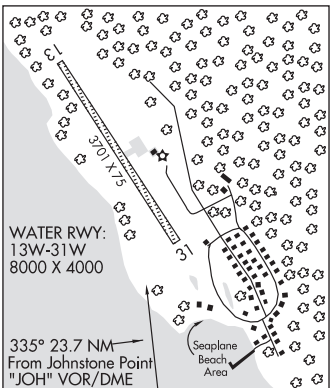
125°-188° byd 10 NM

DME unusable:

090°-124° byd 23 NM blo 12,000'

125°-191° byd 10 NM

**COMM/NAV/WEATHER REMARKS:** For a toll free call to Juneau FSS dial 1-866-297-2236.



**WATERWAY 13W-31W:** 8000X4000 (WATER)

**SEAPLANE REMARKS:** Unattended. Waterway condition not monitored, recommend visual inspection prior to using. Be alert: rocks in water area low tide.