

COLD BAY

BLINN LAKE SPB (Z87) 3 N UTC-9(-8DT) N55°15.10' W162°45.20'

COLD BAY

50 NOTAM FILE CDB

WATERWAY E-W: 2500X1000 (WATER)

WATERWAY N-S: 2000X1000 (WATER)

SERVICE: FUEL 100LL, JET A **LGT** Rotating bcn adj on Cold Bay Arpt.

AIRPORT REMARKS: Unattended. Considerable seabird activity—nest on islands. Fuel avbl from Cold Bay Arpt. No delivery avbl.

Must have own truck and cans. Call 907-532-2467 Mon-Fri 9-5 lcl.

COMMUNICATIONS: CTAF 123.6

RADIO AIDS TO NAVIGATION: NOTAM FILE CDB.

COLD BAY (H) (H) VORTACW 112.6 CDB Chan 73 N55°16.04' W162°46.44' 133° 1.2 NM to fld. 99/10E.

VOR unusable:

094°-129° byd 30 NM blo 9,000'

164°-199° byd 20 NM blo 14,000'

164°-199° byd 35 NM

349°-009° blo 10,000'

349°-009° byd 15 NM

TACAN AZIMUTH unusable:

094°-129° byd 30 NM blo 9,000'

164°-199° byd 20 NM blo 14,000'

164°-199° byd 35 NM

269°-279° byd 20 NM

DME unusable:

094°-129° byd 30 NM blo 9,000'

164°-199° byd 20 NM blo 14,000'

164°-199° byd 35 NM

269°-279° byd 20 NM

COMM/NAV/WEATHER REMARKS: Wx and tfc advisories avbl from Cold Bay FSS—123.6.

COLD BAY (CDB)(PACD) 0 N UTC-9(-8DT) N55°12.36' W162°43.58'

COLD BAY

100 B ARFF Index—See Remarks NOTAM FILE CDB

H-2J, L-2I

RWY 15-33: H10179X150 (ASPH-GRVD) S-99, D-200, 2D-345,

IAP, DIAP, AD

2D/2D2-875 PCN 62 F/B/X/T HIRL

RWY 15: MALSR. RVR-T

RWY 33: PAPI(P4L)—GA 3.0° TCH 36'. RVR-R Rgt tfc.

RWY 08-26: H4900X150 (ASPH-GRVD) S-99, D-131, 2D-345

PCN 62 F/B/X/T HIRL

RWY 08: PAPI(P4L)—GA 3.5° TCH 38'.

RWY 26: PAPI(P4L)—GA 3.0° TCH 36'. Rgt tfc.

RUNWAY DECLARED DISTANCE INFORMATION

RWY 08: TORA-4900 TODA-4900 ASDA-4900 LDA-4900

RWY 15: TORA-10179 TODA-10179 ASDA-10179 LDA-10179

RWY 26: TORA-4900 TODA-4900 ASDA-4900 LDA-4900

RWY 33: TORA-10179 TODA-10179 ASDA-10179 LDA-10179

SERVICE: FUEL 100LL, JET A **LGT** Rotg bcn photocell ops. Rotg bcn unmon when FSS unmanned. Rwy 08 PAPI unusbl byd 5 deg rgt of cntrln. Actvt MALSR Rwy 15; PAPI Rwy 08, 26 and 33; HIRL Rwy 08-26 and 15-33—CTAF.

AIRPORT REMARKS: Attended Mon-Sat 1600-0300Z†. 110LL: Fuel svc charge aft hr. Birds invof all rwy apch ends. Snow, ice removal and arpt haz rptg durg duty hr unless prior arrngmt in writing-AMGR. Class I, ARFF Index B. Clsd to acr ops with more than 30 pax seats excp written PPR-AMGR Box 97 Cold Bay, AK 99571. ARFF avbl for Part 121 carriers involved in ETOPS with 30 min notice. CFR Index B; may be reduced for acct less than 90 ft. Personnel and equip on rwy. Unlgtd twr 0.4 NM N; unlgtd twr 0.9 NM S; unlgtd twr 4.8 NM NW. Arpt sand lgrg grade than FAA rcmd/see AC150/5200-30. Brakelock turns NA. No customs avbl; written 24-48 hr PPR for foreign arr rflg stops-FAX 907-271-2684 or 907-271-2686. NWS weather balloon launch fac lctd on arpt; see inside back cover for details.

AIRPORT MANAGER: 907-532-5000

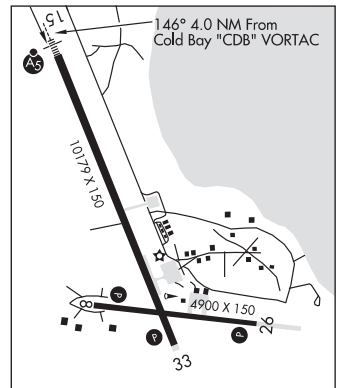
WEATHER DATA SOURCES: ASOS 135.75 (907) 532-2639. (WX CAM)

COMMUNICATIONS: CTAF 123.6 FSS CDB (COLD BAY) 1700-0245Z†, OT ctc Kenai FSS.

COLD BAY RADIO 121.5 122.2 123.6 (LAA 123.6)

RCO 121.5 122.2 123.6 (KENAI RADIO)

ANCHORAGE CENTER APP/DEP CON 118.5 278.3



CONTINUED ON NEXT PAGE

CONTINUED FROM PRECEDING PAGE

AIRSPACE: CLASS E.

RADIO AIDS TO NAVIGATION: NOTAM FILE CDB.

(H) (H) VORTACW 112.6 CDB Chan 73 N55°16.04' W162°46.44' 146° 4.0 NM to fld. 99/10E.

VOR unusable:

094°-129° byd 30 NM blo 9,000'

164°-199° byd 20 NM blo 14,000'

164°-199° byd 35 NM

349°-009° blo 10,000'

349°-009° byd 15 NM

TACAN AZIMUTH unusable:

094°-129° byd 30 NM blo 9,000'

164°-199° byd 20 NM blo 14,000'

164°-199° byd 35 NM

269°-279° byd 20 NM

DME unusable:

094°-129° byd 30 NM blo 9,000'

164°-199° byd 20 NM blo 14,000'

164°-199° byd 35 NM

269°-279° byd 20 NM

ELFEE NDB (HW) 341 ELF N55°17.77' W162°47.35' 148° 5.8 NM to fld. 32/10E.

ILS 110.3 I-CDB Rwy 15. Class IE. Localizer backcourse unusable within 6.2 DME; byd 20° left of course; byd 25° right of course.

COMM/NAV/WEATHER REMARKS: For a LC to Cold Bay FSS dial 532-2454. For a toll free call to Cold Bay FSS dial 1-800-478-7250. For a toll free call to Kenai FSS dial 1-866-864-1737. Telephone 532-2448 for WSO.

PORT MOLLER (1AK3)(PAAL) PVT 87 NE UTC-9(-8DT) N56°00.36' W160°33.65'

COLD BAY

20 NOTAM FILE Not insp.

L-21

RWY 01-19: 3500X100 (GRVL)

AIRPORT REMARKS: Unattended. No svc avbl. Recommend visual inspection prior to ldg.

AIRPORT MANAGER: 907-267-1252

COLDFOOT (CXF)(PACX) 0 WSW UTC-9(-8DT) N67°15.13' W150°12.23'

FAIRBANKS

1049 B NOTAM FILE FAI

H-1A, L-4J

RWY 02-20: 4011X75 (GRVL) MIRL 0.4% up N

IAP

RWY 02: Brush.

RWY 20: Trees.

SERVICE: LGT ACTIVATE MIRL Rwy 02-20 and twy lgts—CTAF.

AIRPORT REMARKS: Unattended. Rwy condition not monitored, recommend visual inspection prior to using. Cold temperature airport. Altitude correction required at or below -19C.

AIRPORT MANAGER: 907-451-2207

WEATHER DATA SOURCES: AWOS-3PT 118.0 (907) 269-2771. (WX CAM)

COMMUNICATIONS: CTAF 122.9

COLDFOOT RCO 122.0 (FAIRBANKS RADIO)

ANCHORAGE CENTER APP/DEP CON 124.6 352.0

RADIO AIDS TO NAVIGATION: NOTAM FILE BTT.

BETTLES (H) (H) VOR/DME 116.0 BTT Chan 107 N66°54.30'

W151°32.15' 036° 37.6 NM to fld. 637/20E.

VOR AZIMUTH & DME unusable:

047°-077° byd 24 NM

COMM/NAV/WEATHER REMARKS: For a toll free call to Fairbanks FSS dial 1-866-248-6516.

