

**MERLE K (MUDHOLE) SMITH** (CDV)(PACV) 11 SE UTC-9(-8DT) N60°29.50' W145°28.65' ANCHORAGE  
 53 B ARFF Index—See Remarks NOTAM FILE CDV H-1B, L-1A, 3E, 4H  
 RWY 09-27: H7500X150 (ASPH-GRVD) S-90, D-153, 2D-280 IAP  
 PCN 94 F/A/X/T HIRL

RWY 09: ODALS. VASI(V4L)—GA 3.0° TCH 41'. RVR-TR Antenna. Rgt tfc.  
 RWY 27: MALSR. VASI(V4L)—GA 3.0° TCH 57'. RVR-TR Pole.

RWY 16-34: 1934X30 (GRVL) 0.6% up N  
 RWY 34: Trees.

**RUNWAY DECLARED DISTANCE INFORMATION**  
 RWY 09: TORA-7500 TODA-7500 ASDA-7500 LDA-7500  
 RWY 27: TORA-7500 TODA-7500 ASDA-7500 LDA-7500

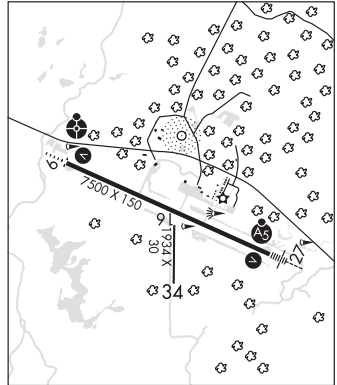
**ARRESTING GEAR/SYSTEM**  
 RWY 27: EMAS

**SERVICE:** LGT ACTIVATE MALSR Rwy 27, ODALS Rwy 09, VASI Rwy 09 and 27, HIRL Rwy 09-27—CTAF. Rwy 09 VASI unusbl byd 4 NM, due to obsts.

**AIRPORT REMARKS:** Attended 1500-0130Z±. Moose and birds invof arpt and rwy. Erratic winds. Class I, ARFF Index B. CLOSED to ACR ops more than 30 pax seats exc 24 hr PPR in writing—Amgr Box 598, Cordova, AK 99574. Arpt svcs and cond rptg avbl only durg maint duty hr. Aft hr—Amgr. Btn 0100-1600Z± snow removal and deice NA. Rwy cond rpt reflects day opns only. Rwy 16-34 ACR ops more than 30 pax seats NA. Rwy 16-34 36 in orange cones May 1—Oct 25. ARFF eqpt durg ACR act only. Arpt sand larger gradation than FAA rcmd/see AC150/5200-30. TSA regulated arpt. See 49 CFR 1542. Gates and doors must be secured at all times; Info—Amgr.

**AIRPORT MANAGER:** 907-424-3202  
**WEATHER DATA SOURCES:** ASOS 134.8 (907) 424-5900. (WX CAM)  
**COMMUNICATIONS:** CTAF 123.6  
**CORDOVA RCO** 122.2 123.6 (JUNEAU RADIO)  
**ANCHORAGE CENTER APP/DEP CON** 269.4 133.6 119.3

**AIRSPACE:** CLASS E svc continous.  
**RADIO AIDS TO NAVIGATION:** NOTAM FILE CDV.  
**GLACIER RIVER NDB (HW)** 404 GCR N60°29.93' W145°28.47' at fld. 58/17E.  
**ORCA BAY NDB (HW)** 233 ALJ N60°28.79' W146°35.25' 070° 33.0 NM to fld. 31/18E.  
 NDB unusable:  
 321°-341° byd 40NM blo 7,400'  
**ILS/DME** 110.7 I-CDV Chan 44 Rwy 27. Class IE. LOC unusable beyond 10° north of course.  
**COMM/NAV/WEATHER REMARKS:** For a toll free call to Juneau FSS dial 1-866-297-2236. Cordova Wx-424-7614 OR 122.65



**COTTONWOOD LAKE SPB** (See WASILLA on page 255)

**COUNCIL** (K29) 1 N UTC-9(-8DT) N64°53.80' W163°42.21' NOME  
 100 NOTAM FILE OME L-3A, 3C, 4H

RWY 10-28: 3000X60 (TURF) 0.4% up W  
 RWY 10: Brush.  
 RWY 28: Brush.

**AIRPORT REMARKS:** Unattended. Rwy cond not monitored, recommend visual inspection prior to ldg. Rwy not maintained dur winter. Rwy 10-28 nst markings, marked with cones and thld panels. Thld panels faded to white. Tall grass on rwy and ramp.

**AIRPORT MANAGER:** 907-443-2500  
**COMMUNICATIONS:** CTAF 122.9  
**RADIO AIDS TO NAVIGATION:** NOTAM FILE OME.  
**NOME (H) (H) VORW/DME** 115.0 OME Chan 97 N64°29.11' W165°15.19' 046° 47.0 NM to fld. 95/11E.

**COMM/NAV/WEATHER REMARKS:** For a toll free call to Nome FSS dial 1-800-478-8400. For a toll free call to Fairbanks FSS dial 1-866-248-6516.

