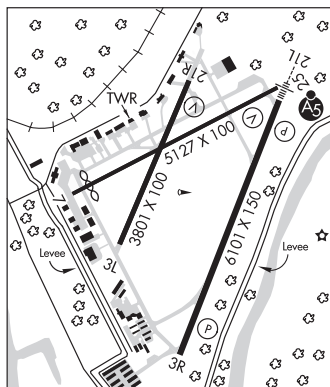


CINCINNATI MUNI/LUNKEN FLD (LUK)(KLUK) 3 SE UTC-5(-4DT) N39°06.20' W84°25.12'**CINCINNATI**
H-10G, L-27E
IAP, AD

483 B LRA Class IV, ARFF Index A NOTAM FILE LUK

RWY 03R-21L: H6101X150 (ASPH-GRVD) S-60, D-70, 2S-88,
2D-140 PCN 42 R/C/X/T HIRL**RWY 03R:** REIL. PAPI(P4R)—GA 3.0° TCH 44'. RVR-R Tree.**RWY 21L:** MALSR. PAPI(P4L)—GA 3.0° TCH 39'. RVR-T Trees.**RWY 07-25:** H5127X100 (ASPH-GRVD) S-11, D-20, 2D-55
PCN 38 R/C/X/T MIRL**RWY 07:** Thld displcd 439'. Tree.**RWY 25:** VASI(V4L)—GA 3.0° TCH 40'.**RWY 03L-21R:** H3801X100 (ASPH) S-11 PCN 6 F/C/Y/T MIRL**RWY 03L:** Trees.**RWY 21R:** VASI(V4L)—GA 4.0° TCH 46'. P-line.**RUNWAY DECLARED DISTANCE INFORMATION****RWY 03R:**TORA-6101 TODA-6101 ASDA-6101 LDA-6101**RWY 21L:**TORA-6101 TODA-6101 ASDA-6101 LDA-6101**SERVICE:** S4 FUEL 100LL, JET A+ OX 1 LGT When twr clsd ACTIVATE
or incr intst: MALSR Rwy 21L, HIRL Rwy 03R-21L—CTAF. HIRL Rwy
03R-21L preset on med ints. Rws 03L-21R and Rwy 07-25 PCL
unavbl. Rwy 03R PAPI unusbl by 7° left of cntrln. Rotating bcn located
1.7 NM E of arpt.**NOISE:** Noise abatement procs in efct call amgr. Aaft maint runups rstrd btn
0200-1200Z†.**AIRPORT REMARKS:** Attended continuously. Deer and birds on and invof arpt. Fuel A+ C513-871-2020. When twr closed use
CTAF. Clsd to scheduled ACR ops greater than 9 pax seats. 48 hr PPR for unsched ACR ops with grtr than 30 passenger
seats call amgr. Rwy 03L-21R clsd to unsked acr ops grtr than 30 pax seats. Rwy 07-25 clsd to unsked acr ops grtr than
30 pax seats. AER Rwy 25 and Rwy 21L are closely lctd. Verify correct rwy with compass hdg bfr dep. Arpt sfc cond
unmon dly 0400-1200Z†. Twy D, E, G, & H clsd to unsked acr ops grtr than 30 pax seats. Twy H not visible from twr,
contact ground control. Rwy 03L-21R cracks and surface variations. Ldg fee. Flight Notification Service (ADCUS)
available.**AIRPORT MANAGER:** 513-352-6340**WEATHER DATA SOURCES:** ASOS (513) 321-6291**COMMUNICATIONS:** CTAF 118.7 ATIS 123.6 UNICOM 122.95**APP/DEP CON** 121.0**LUNKEN TOWER** 118.7 (1200-0400Z†) **GND CON/CLNC DEL** 121.9 **CLNC DEL** 124.9 (when twr closed)**AIRSPACE:** CLASS D svc 1200-0400Z†; other times CLASS E.**VOR TEST FACILITY (VOT)** 108.4**RADIO AIDS TO NAVIGATION:** NOTAM FILE CVG.(L) (L) **VORTACW** 117.3 CVG Chan 120 N39°00.96' W84°42.20' 072° 14.3 NM to fld. 878/4W.**ILS/DME** 110.9 I-LUK Chan 46 Rwy 21L. Class IA. Unmonitored when ATCT clsd. DME unusable byd 25° left of
course.**COMM/NAV/WEATHER REMARKS:** Emerg frequency 121.5 not avbl at twr. Cust in tempo fac; cust fac reqs must be smtd to arpt
first by calling 513-709-2761 or email #DOTE-AVIATION@CINCINNATI.OH.GOV.**CINCINNATI WEST** (See HARRISON on page 291)**CINCINNATI/NORTHERN KENTUCKY INTL** (See COVINGTON on page 279)