

CIRCLEVILLE

PICKAWAY CO MEML (CYO)(KCYO) 5 S UTC-5(-4DT) N39°30.96' W82°58.93'

CINCINNATI

685 B NOTAM FILE DAY

L-29A

RWY 01-19: H4346X75 (ASPH) S-30, D-40 MIRL 0.5% up N

IAP

RWY 01: Trees.

RWY 19: REIL. PAPI(P4R)—GA 3.0° TCH 24'.

SERVICE: FUEL 100LL, JET A LGT ACTIVATE REIL Rwy 19; PAPI Rwy 19; MIRL—CTAF.

AIRPORT REMARKS: Unatndd. Fuel: 100LL and Jet A avbl H24 via credit card.

AIRPORT MANAGER: 740-474-5145

COMMUNICATIONS: CTAF/UNICOM 122.7

Ⓜ COLUMBUS APP/DEP CON 134.0

CLEARANCE DELIVERY PHONE: For CD ctc Columbus Apch at 614-338-8537.

RADIO AIDS TO NAVIGATION: NOTAM FILE DAY.

APPLETON (VH) (H) VORTAC 116.7 APE Chan 114 N40°09.06' W82°35.30' 212° 42.2 NM to fld. 1354/6W.

VOR unusable:

025°-030°

TACAN AZIMUTH unusable:

075°-095°

110°-115°

DME unusable:

075°-080°

YELLOW BUD (T) VORW 112.5 XUB N39°31.61' W82°58.68' at fld. 689/5W.

CLERMONT CO (See BATAVIA on page 262)

CLEVELAND

BURKE LAKEFRONT (BKL)(KBKL) 1 N UTC-5(-4DT) N41°31.07' W81°40.96'

DETROIT

584 B ARFF Index—See Remarks NOTAM FILE BKL

H-10G, L-30G

RWY 06L-24R: H6604X150 (ASPH-GRVD) S-93, D-113, 2S-144,

IAP, AD

2D-170 PCN 84 F/C/X/T HIRL

RWY 06L: REIL. PAPI(P4R)—GA 3.0° TCH 45'. Thld dsplcd 178'.

RWY 24R: MALSF. PAPI(P4R)—GA 3.0° TCH 42'. Thld dsplcd 600'.

Bldg. Rgt tfc.

RWY 06R-24L: H5197X100 (ASPH-GRVD) S-43, D-50, 2D-82

PCN 63 F/C/X/T HIRL

RWY 06R: Thld dsplcd 275'.

RWY 24L: REIL. Antenna. Rgt tfc.

RUNWAY DECLARED DISTANCE INFORMATION

RWY 06L:TORA-6503 TODA-6503 ASDA-6503 LDA-6325

RWY 06R:TORA-5199 TODA-5199 ASDA-5199 LDA-4924

RWY 24L:TORA-5199 TODA-5199 ASDA-5199 LDA-5199

RWY 24R:TORA-6603 TODA-6603 ASDA-6603 LDA-6003

ARRESTING GEAR/SYSTEM

RWY 24R: EMAS

SERVICE: S4 FUEL 100LL, JET A OX 1, 2 LGT When ATCT clsd actvt

MALSF Rwy 24R; REIL Rwy 06L—CTAF. HIRL Rwy 06L-24R preset

med instst, to incr instst RDO req on UNICOM. PAPI Rwy 06L and 24R

opr consly. Rwy 06L unusable byd 5° right of centerline. PAPI Rwy

24R unusable byd 8° left of course.

AIRPORT REMARKS: Attended continuously. Birds and waterfowl on and invof airport. 72' ship crane 1300' southwest of Rwy

06R. Class IV ARFF Index A. Clsd to skedd acr ops gtr than 9 pax seats. PPR for unsked acr ops with more than 30 pax

seats call amgr. Rwy 06R-24L clsd to unsked acr ops gtr than 30 pax seats; clsd when ATCT clsd. Rwy 06L-24R and

Rwy 06R-24L apch surfaces have navigable waterways creating possible vessel obstruction areas—check local NOTAMS

for current activity; vessel height; etc. Ldg fee. Fee schedule based on number of engines and gross weight. Flight

Notification Service (ADCUS) avbl 24 hrs Mon-Fri reg for svc on Sat; Sun and holidays must be made prior to 2130Z on

Fri; 2 hrs advance notice req call 216-267-3600. Private acct and general aviation only.

AIRPORT MANAGER: 216-781-6411

WEATHER DATA SOURCES: ASOS (216) 241-6904 LAWRS.

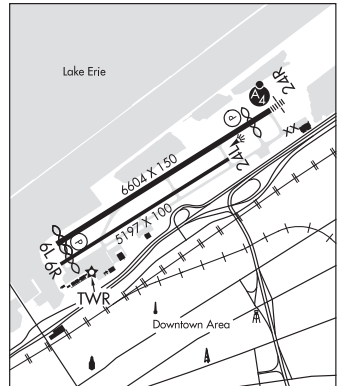
COMMUNICATIONS: CTAF 124.3 ATIS 125.25 UNICOM 122.95

Ⓜ CLEVELAND APP/DEP CON 125.35

TOWER 124.3 (1200Z Fri, 1200-0400Z Sat, 1300-0500Z Sun) GND CON 121.9

CLNC DEL 121.9 (When twr clsd)

CLEARANCE DELIVERY PHONE: For CD when ATCT clsd ctc Cleveland Apch at 216-352-2323.



CONTINUED ON NEXT PAGE

CONTINUED FROM PRECEDING PAGE

AIRSPACE: CLASS D svc 1200 Mon to 0400Z† Fri, 1200–0400Z† Sat, 1300–0500Z† Sun; other times CLASS G.

RADIO AIDS TO NAVIGATION: NOTAM FILE CLE.

CHARDON (H) (DH) VOR/DME 112.7 CXR Chan 74 N41°31.02' W81°09.79' 275° 23.4 NM to fld. 1317/5W.

VOR unusable:

074°–084° byd 10 NM blo 3,300'

085°–099° byd 10 NM blo 11,000'

104°–180° byd 10 NM blo 6,000'

357°–073° byd 10 NM blo 11,000'

DME unusable:

019°–029° byd 34 NM blo 3,700'

158°–174° blo 5,500'

253°–274° blo 4,100'

ILS/DME 109.75 I-BFT Chan 34(Y) Rwy 24R. Class IE. DME unusable byd 30° right of course.

COMM/NAV/WEATHER REMARKS: Emerg frequency 121.5 not available at twr.

CLEVELAND—HOPKINS INTL (CLE)(KCLE) 9 SW UTC–5(–4DT) N41°24.56' W81°51.28'

DETROIT

800 B AOE Class I, ARFF Index C NOTAM FILE CLE

H–10G, L–30G

RWY 06R–24L: H9953X150 (CONC–GRVD) S–100, D–185, 2S–175,

IAP, AD

2D–340 PCN 63 R/B/W/T HIRL CL

RWY 06R: MALSR. TDZL. PAPI(P4L)—GA 3.0° TCH 73'. RVR–TMR
Thid dsplcd 1923'. Trees.

RWY 24L: MALSR. TDZL. PAPI(P4R)—GA 3.0° TCH 48'. RVR–TMR

RWY 06L–24R: H9000X150 (CONC–GRVD) S–75, D–200, 2S–175,

2D–400 PCN 78 R/B/W/T HIRL CL

RWY 06L: ALSF2. TDZL. PAPI(P4L)—GA 3.0° TCH 69'. RVR–TMR
Trees.

RWY 24R: ALSF2. TDZL. PAPI(P4R)—GA 3.0° TCH 65'. RVR–TMR

RWY 10–28: H6018X150 (ASPH–CONC–GRVD) S–155, D–200,

2S–175, 2D–400 PCN 80 R/B/W/T HIRL 0.5% up E

RWY 10: REIL. PAPI(P4L)—GA 3.0° TCH 45'. RVR–R Tree.

RWY 28: MALSF. PAPI(P4R)—GA 3.0° TCH 45'. RVR–T Pole.

RUNWAY DECLARED DISTANCE INFORMATION

RWY 06L:TORA–9000 TODA–9000 ASDA–9000 LDA–9000

RWY 06R:TORA–9956 TODA–9956 ASDA–9956 LDA–8029

RWY 10:TORA–6018 TODA–6018 ASDA–6018 LDA–6018

RWY 24L:TORA–9956 TODA–9956 ASDA–9956 LDA–9956

RWY 24R:TORA–9000 TODA–9000 ASDA–9000 LDA–9000

RWY 28:TORA–6018 TODA–6018 ASDA–6018 LDA–6018

ARRESTING GEAR/SYSTEM

RWY 10: EMAS

RWY 28: EMAS

SERVICE: S4 FUEL 100LL, JET A1+ OX 1, 2, 3, 4 LGT PAPI unusbl byd 8° L&R of cntrln.

NOISE: All apchs are ovr noise sensitive areas. Arpt late ngt noise abatement procedures are in effect 0400–1100Z†.

Additional noise abatement procedures are in effect call amgr normal business hrs at 216–265–6090.

AIRPORT REMARKS: Attended continuously. Deer, coyotes, & birds inclg waterfowl on & invof arpt. ASSC in use. Operate transponders with altitude reporting mode and ADS–B (if equipped) enabled on all airport surfaces. Twys clsd Oct–Apr to support deicing ops: Twy M; Twy J2; Twy M1 btn Twy L & Twy J1; Twy M2 btn Twy L & Twy J1. Txl H clsd to acft with wingspan ovr 171 ft. Pad 2 and Taxilane Y1 rstd to Group II acft, less than 79' wingspan. Ramp area concourse D between gates D1, D28 clsd except acft wingspan less than 86'. Pad 3 bays 1–5 clsd to acft with wingspan over 134'. Pad 3 bay 6 clsd to acft with wingspan over 94'. Twy F clsd to acft with wingspan over 118'. NASA Glenn Research Center; NASA ramp PPR call 216–433–2031; Mon–Fri 1300–2230Z†. Contact NASA ops on freq 122.925 within 50 NM. Ldg Fee. ADCUS avbl dly 1200–0000Z†, ltd avblty durg off hrs; all reqrs for svc must be made with US Cust Svc ofc lctd at gate A–14 call 216–267–3600 durg listed hrs.

AIRPORT MANAGER: 216-265-6963

WEATHER DATA SOURCES: ASOS (216) 416–2729 TDWR.

COMMUNICATIONS: D–ATIS ARR 127.85 D–ATIS DEP 132.375 UNICOM 122.95

RCO 122.3 (CLEVELAND RADIO)

Ⓡ APP CON 126.55

Ⓡ DEP CON 128.25 135.875

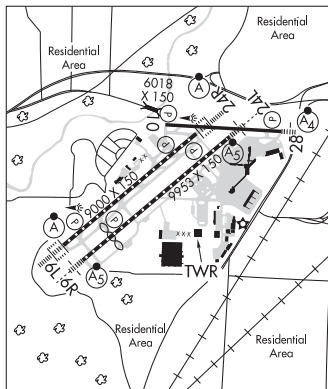
TOWER 124.5

GND CON 121.7 CLNC DEL 125.05

CPDLC (LOGON KUSA)

PDC

AIRSPACE: CLASS B See VFR Terminal Area Chart.



CONTINUED ON NEXT PAGE