

DANVILLE

VERMILION RGNL (DNV)(KDNV) 4 NE UTC-6(-5DT) N40°11.99' W87°35.71'

697 B NOTAM FILE DNV

RWY 03-21: H6006X100 (ASPH-PFC) S-50, D-75, 2S-95 HIRL

0.8% up NE

RWY 03: VASI(V4L)—GA 3.0° TCH 41'. Tree.

RWY 21: MALSRL PAPI(P4L)—GA 3.0° TCH 46'.

RWY 16-34: H3999X100 (ASPH-GRVD) S-40, D-50 MIRL

0.6% up N

RWY 16: REIL. VASI(V2L)—GA 3.0° TCH 23'.

RWY 34: REIL. VASI(V2L)—GA 3.0° TCH 14'.

RWY 12-30: 2500X150 (TURF) 0.3% up NW

SERVICE: S4 FUEL 100LL, JET A LGT HIRL Rwy 03-21 preset low intst

—to incr intst & actvt MALSRL Rwy 21; REIL Rwys 16 & 34; VASI Rwys

03, 16 & 34; PAPI Rwy 21; MIRL Rwy 16-34—CTAF.

AIRPORT REMARKS: Attended 1300-0400Z†. Extv glider ops weekends. Rwy

12-30 seasonal rwy Nov 1-May 1; Ctc amgr 217-442-4624. Air

cargo Part 135 ft depts ngly 0400Z†, arrs dly 1200Z† Mon-Sat.

AIRPORT MANAGER: 217-442-4624

WEATHER DATA SOURCES: AWOS-3 119.275 (217) 442-4660.

COMMUNICATIONS: CTAF/UNICOM 122.7

Ⓡ CHAMPAIGN APP/DEP CON 121.35 (1200-0500Z† other times ctc)

Ⓡ CHICAGO CENTER APP/DEP CON 121.35

CLNC DEL 121.7

CLEARANCE DELIVERY PHONE: For CD if unable via radio ctc Champaign Apch at 217-355-4071, when Apch clsd ctc Chicago ARTCC at 630-906-8921

RADIO AIDS TO NAVIGATION: NOTAM FILE DNV.

DANVILLE (L) TACAN Chan 47 DNV (111.0) N40°17.63' W87°33.44' 195° 5.9 NM to fld. 699/2E.

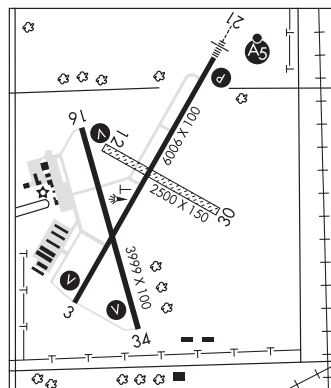
JULIP NDB (LOMW) 332 DN N40°17.38' W87°31.80' 209° 6.2 NM to fld. 706/OE.

ILS 108.5 I-DNV Rwy 21. Class IE. LOM JULIP NDB. Unmonitored.

CHICAGO

H-5E, L-27D

IAF



DANVILLE N40°17.63' W87°33.44' NOTAM FILE DNV.

(L) TACAN 111.0 DNV Chan 47 195° 5.9 NM to Vermilion Rgnl. 699/2E.

CHICAGO

H-5E, 4H, L-27D

DE KALB TAYLOR MUNI (DKB)(KDKB) 2 E UTC-6(-5DT) N41°56.03' W88°42.34'

913 B NOTAM FILE DKB

RWY 02-20: H7026X100 (ASPH-GRVD) S-25, D-80 MIRL

RWY 02: MALSRL PAPI(P4L)—GA 3.0° TCH 53'. Railroad.

RWY 20: REIL. PAPI(P4L)—GA 3.0° TCH 29'.

RWY 09-27: H4201X75 (ASPH-GRVD) S-25, D-80 MIRL

RWY 09: REIL. PAPI(P4L)—GA 3.0° TCH 30'.

RWY 27: REIL. PAPI(P4L)—GA 3.0° TCH 24'.

SERVICE: S4 FUEL 100LL, JET A1+ OX 4 LGT MIRL Rwy 02-20

preset low intst, to incr intst and ACTIVATE MIRL Rwy 09-27, PAPI

Rwy 09 and Rwy 27, REIL Rwys 09, 27 and 20; MALSRL Rwy

02—CTAF. PAPI Rwy 02 and Rwy 20 operate 24 hrs.

AIRPORT REMARKS: Attended Nov-Feb 1400-2200Z†, Mar-Oct

1400-2300+.

AIRPORT MANAGER: 815-748-8102

WEATHER DATA SOURCES: AWOS-3 119.075 (815) 748-2350.

COMMUNICATIONS: CTAF/UNICOM 122.7

Ⓡ CHICAGO APP/DEP CON 133.5

CLEARANCE DELIVERY PHONE: For CD ctc Chicago Apch at 847-289-0926.

RADIO AIDS TO NAVIGATION: NOTAM FILE DPA.

DUPAGE (L) (L) VOR/DME 108.4 DPA Chan 21 N41°53.42'

W88°21.01' 277° 16.1 NM to fld. 802/2E.

VOR unusable:

290°-310° byd 35 NM

DME unusable:

290°-340° byd 35 NM

ILS/DME 109.95 I-DJK Chan 36(Y) Rwy 02. Class IT. Unmonitored.

CHICAGO

H-5E, L-28H

IAF

