

**MAHONOMEN CO** (3N8) 3 SSE UTC-6(-5DT) N47°15.63' W95°55.69'

TWIN CITIES

1246 B NOTAM FILE PNM

L-14H

**RWY 17-35:** H3400X75 (ASPH) MIRL

IAP

**RWY 17:** REIL. PAPI(P2L)—GA 3.0° TCH 25'.

**RWY 35:** REIL. PAPI(P2L)—GA 3.0° TCH 25'.

**RWY 09-27:** 2720X120 (TURF)

**SERVICE:** FUEL 100LL LGT Actvt or incr intst REIL Rwy 17 and 35; PAPI Rwy 17 and 35; MIRL Rwy 17-35—CTAF. MIRL Rwy 17-35 preset low intst.

**AIRPORT REMARKS:** Unattended. Ultralight tfc on and invof arpt. Fuel avbl H24 self ser via credit card. Rwy 09 and 27 mkd with yellow cones.

Rwy 9-27 not plowed winter months.

**AIRPORT MANAGER:** 218-280-1585

**WEATHER DATA SOURCES:** AWOS-3PT 121.125 (218) 936-2507.

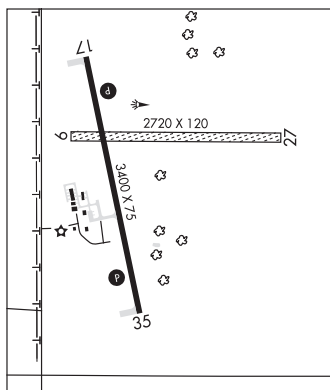
**COMMUNICATIONS:** CTAF 122.9

Ⓡ MINNEAPOLIS CENTER APP/DEP CON 127.35

**CLEARANCE DELIVERY PHONE:** For CD ctc Minneapolis ARTCC at 651-463-5588.

**RADIO AIDS TO NAVIGATION:** NOTAM FILE FAR.

FARGO (VH) (DH) VORW/DME 116.2 FAR Chan 109 N46°45.20' W96°51.08' 042° 48.6 NM to fld. 909/9E.



**MANKATO RGNL** (MKT)(KMKKT) 5 NE UTC-6(-5DT) N44°13.37' W93°55.16'

OMAHA

1021 B TPA—See Remarks NOTAM FILE MKT

H-21, L-121, A

**RWY 15-33:** H6600X100 (CONC-GRVMD) S-60, D-120, 2D-155, 2D/2D2-237 HIRL

IAP, AD

**RWY 15:** REIL. PAPI(P4L)—GA 3.0° TCH 48'.

**RWY 33:** MALSR. PAPI(P4L)—GA 3.0° TCH 49'. Crops.

**RWY 04-22:** H4000X75 (ASPH) S-18, D-25 MIRL 0.3% up NE

**RWY 04:** REIL. PAPI(P4L)—GA 3.0° TCH 39'.

**RWY 22:** REIL. PAPI(P4L)—GA 3.0° TCH 26'.

**SERVICE:** S4 FUEL 100LL, JET A+ QX4 LGT ACTIVATE MALSR Rwy 33; REIL Rwy 04, 15 and 22; PAPI Rwy 04, 15, 22 and 33; MIRL Rwy 04-22; HIRL Rwy 15-33—CTAF.

**AIRPORT REMARKS:** Attended Mon-Fri 1200-0200Z, Sat-Sun 1400-0000Z. Fuel: 100LL aft hrs call 507-469-0228. Fuel: A+ : Aft hrs call 507-469-0228. Deer and migratory waterfowl on and invof arpt. Intensive flight training. TPA—2000 (979) (LT TFC) for light acft, 2500 (1479) (LT TFC) for turbine acft and 2000 (979) (RT TFC) for rotocraft acft. Rwy 33 calm wind rwy.

**AIRPORT MANAGER:** 507-387-8640

**WEATHER DATA SOURCES:** AWOS-3PT 118.175 (507) 625-3726.

**COMMUNICATIONS:** CTAF/UNICOM 122.725

Ⓡ MINNEAPOLIS CENTER APP/DEP CON 135.0

**CLEARANCE DELIVERY PHONE:** For CD ctc Minneapolis ARTCC at 651-463-5588.

**AIRSPACE:** CLASS E svc 1100Z-0700Z Mon-Sun; other times CLASS G.

**RADIO AIDS TO NAVIGATION:** NOTAM FILE MKT.

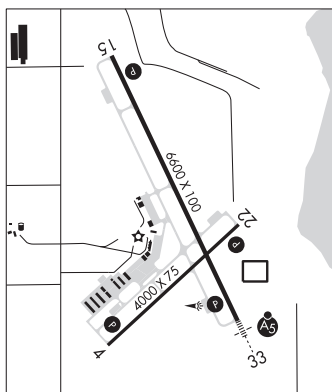
(L) DME 110.8 MKT Chan 45 N44°13.19' W93°54.74' at fld. 1026.

DME unusable:

325°-150° byd 16 NM

ILS 108.7 I-MKT Rwy 33. Class IT. Autopilot cpd apch na blw 1,200'. Unmonitored.

**COMM/NAV/WEATHER REMARKS:** FBO avbl on 123.5



**MANKATO** N44°13.19' W93°54.74' NOTAM FILE MKT.

OMAHA

(L) DME 110.8 MKT Chan 45 at Mankato Rgnl. 1026.

L-121

DME unusable:

325°-150° byd 16 NM