

**LOUP CITY MUNI** (ØF4) 1 NW UTC-6(-5DT) N41°17.18' W98°59.40'

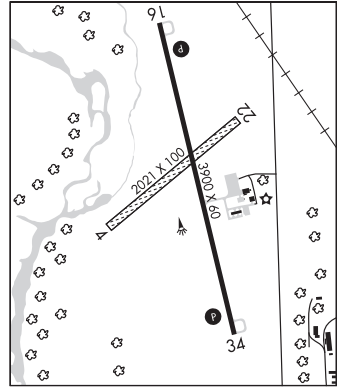
2073 B NOTAM FILE OLU

**RWY 16-34:** H3900X60 (CONC) S-12.5 MIRL**RWY 16:** PAPI(P2L)—GA 3.0° TCH 40'.**RWY 34:** PAPI(P2L)—GA 3.0° TCH 40'. Tree.**RWY 04-22:** 2021X100 (TURF)**RWY 04:** Trees.**RWY 22:** Tree.**SERVICE:** FUEL 100LL LGT MIRL Rwy 16-34 low ints SS-SR; to incr ints—CTAF; PAPI Rwy 16 and Rwy 34—CTAF.**AIRPORT REMARKS:** Unattended. For svc call 308-745-1244. 24 hr self svc credit card.**AIRPORT MANAGER:** 308-390-1500**COMMUNICATIONS:** CTAF 122.9Ⓡ **MINNEAPOLIS CENTER APP/DEP CON** 126.05 278.8**CLEARANCE DELIVERY PHONE:** For CD ctc Minneapolis ARTCC at 651-463-5588.**RADIO AIDS TO NAVIGATION:** NOTAM FILE OLU.**WOLBACH (H) DME** 112.0 OBH Chan 57 N41°22.54' W98°21.22' 260° 29.3 NM to fld. 2010.

OMAHA

L-10H, 12H

IAP

**MARTIN FLD** (See SO SIOUX CITY on page 317)**MC COOK BEN NELSON RGNL** (MCK)(KMCK) 2 E UTC-6(-5DT) N40°12.38' W100°35.53'

2583 B Class IV, ARFF Index A NOTAM FILE MCK MON Airport

**RWY 12-30:** H6450X100 (CONC) S-30, D-38 MIRL 0.4% up NW**RWY 12:** MALSR. PAPI(P4L)—GA 3.0° TCH 38'. Tree.**RWY 30:** REIL. VASI(V4L)—GA 3.0° TCH 44'. Thld dsplcd 750'. Rgt tfc.**RWY 04-22:** H4000X75 (CONC) S-30, D-38 PCN 34 R/C/W/T MIRL**RWY 04:** VASI(V2L)—GA 3.0° TCH 26'. Pole. Rgt tfc.**RWY 22:** VASI(V2L)—GA 3.0° TCH 26'.**RWY 17-35:** 1330X160 (TURF)**RWY 35:** Rgt tfc.**RUNWAY DECLARED DISTANCE INFORMATION****RWY 04:** TORA-4000 TODA-4000 ASDA-4000 LDA-4000**RWY 12:** TORA-6448 TODA-6448 ASDA-5698 LDA-5698**RWY 22:** TORA-4000 TODA-4000 ASDA-4000 LDA-4000**RWY 30:** TORA-6448 TODA-6448 ASDA-6448 LDA-5698**SERVICE:** S4 FUEL 100LL, JET A LGT ACTVT MALSR Rwy 12; PAPI Rwy 12 and VASI Rwy 30—CTAF. Rwy 12 VASI unusable byd 5° right of centerline and 8° left of centerline.**AIRPORT REMARKS:** Attended dalgt hrs. Parachute Jumping. Rwy 17-35 not avbl for sked acr opns with more than 9 psgr seats or unsked acr at least 31 psgr seats.**AIRPORT MANAGER:** 308-345-2022**WEATHER DATA SOURCES:** ASOS 119.025 (308) 345-1193.**COMMUNICATIONS:** CTAF/UNICOM 122.8

RCO 122.6 (COLUMBUS RADIO)

Ⓡ **DENVER CENTER APP/DEP CON** 132.7**CLEARANCE DELIVERY PHONE:** For CD ctc Denver ARTCC on freq. If una, ctc FSS on freq via roo. If una, ctc Denver ARTCC at 303-651-4257.**AIRSPACE:** CLASS E.**RADIO AIDS TO NAVIGATION:** NOTAM FILE MCK.**(VH) (DH) VOR/DME** 115.3 MCK Chan 100 N40°12.23' W100°35.65' at fld. 2569/8E.

VOR unusable:

248°-263° byd 40 NM blo 7,000'

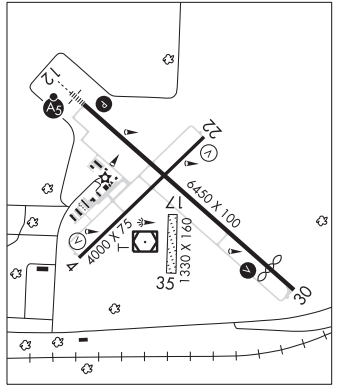
280°-295° byd 40 NM

**ILS/DME** 110.95 I-MCK Chan 46(Y) Rwy 12. Class IT.

OMAHA

H-5B, L-10H

IAP, AD

**MILLARD** (See OMAHA on page 311)**MILLER FLD** (See VALENTINE on page 319)