

**SALISBURY—OCEAN CITY WICOMICO RGNL** (SBY)(KSBY) 4 SE UTC-5(-4DT) N38°20.41'

WASHINGTON

W75°30.57'

H-101, 121, L-34F, 361, A

53 B Class I, ARFF Index B NOTAM FILE SBY

IAP, AD

**RWY 14-32:** H6400X100 (ASPH-CONC-GRVD) S-76, D-126,  
2S-146, 2D-423, 2D/2D2-749 PCN 43 F/C/W/T HIRL

**RWY 14:** REIL. PAPI(P4L)—GA 3.0° TCH 45'.

**RWY 32:** MALSR. PAPI(P4L)—GA 3.0° TCH 54'.

**RWY 05-23:** H5000X100 (ASPH-GRVD) S-56, D-76, 2S-83, 2D-142  
PCN 21 F/C/X/T MIRL

**RWY 05:** REIL. PAPI(P4L)—GA 3.0° TCH 45'. Tree.

**RWY 23:** REIL. PAPI(P4L)—GA 3.0° TCH 45'. Tree.

**RUNWAY DECLARED DISTANCE INFORMATION**

**RWY 05:** TORA-5000 TODA-5000 ASDA-5000 LDA-5000

**RWY 14:** TORA-6400 TODA-6400 ASDA-6400 LDA-6400

**RWY 23:** TORA-5000 TODA-5000 ASDA-5000 LDA-5000

**RWY 32:** TORA-6400 TODA-6400 ASDA-6400 LDA-6400

**SERVICE:** S4 FUEL 100LL, JET A LGT When ATCT clsd ACTVT MALSR  
Rwy 32; REIL Rwy 05, 14, and 23; MIRL Rwy 05-23; HIRL Rwy  
14-32; Twy lghts—CTAF. PAPI Rwy 05, 14, 23, and 32 opr consly.

**AIRPORT REMARKS:** Attended 1030-0500Z†. Mil trng act, deer and birds  
on and in/ov arpt. FBO hrs 1200-0000Z†. For services after hrs call  
410-749-0323. 24 PPR hr rqr for unsked ac ops ctc amgr. Twy E  
clsd to acft wingspan more than 79 ft. Twy G south 950 ft clsd to acft wingspan more than 49 ft.

**AIRPORT MANAGER:** 410-548-4827

**WEATHER DATA SOURCES:** ASOS 118.325 (410) 341-0868.

**COMMUNICATIONS:** CTAF 119.425 UNICOM 122.95

RCO 122.3 (LEESBURG RADIO)

Ⓡ **PATUXENT APP/DEP CON** 127.95 (1200-0400Z† Mon-Sun. Other times by NOTAM) other times ctc

Ⓡ **POTOMAC APP/DEP CON** 127.2

**TOWER** 119.425 (1100-0330Z†) **GND CON** 123.775 **CLNC DEL** 123.775 (1100-0330Z†)

**CLEARANCE DELIVERY PHONE:** For CD ctc Patuxent Apch at 301-342-3740, when Patuxent Apch is clsd ctc Potomac Apch at  
866-640-4124.

**AIRSPACE:** CLASS D svc 1100-0330Z†; other times CLASS E.

**RADIO AIDS TO NAVIGATION:** NOTAM FILE SBY.

(L) (L) **VORTACW** 111.2 SBY Chan 49 N38°20.70' W75°30.63' at fld. 48/12W.

VOR unusable:

007°-026° byd 20 NM blo 7,000'

027°-089° byd 13 NM blo 5,000'

090°-110° byd 20 NM blo 5,000'

111°-113° byd 19 NM blo 5,000'

114°-120° byd 16 NM blo 5,000'

261°-285° blo 6,000'

294°-007° blo 5,000'

TACAN AZIMUTH unusable:

009°-055° byd 20 NM

261°-285° blo 6,000'

294°-007° blo 5,000'

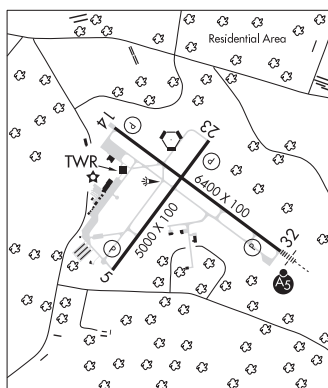
DME unusable:

009°-055° byd 20 NM

261°-285° blo 6,000'

294°-007° blo 5,000'

ILS 108.7 I-SBY Rwy 32. Class IA.



**SNOW HILL** N38°03.40' W75°27.83' NOTAM FILE DCA.

WASHINGTON

(L) (L) **VORTACW** 112.4 SWL Chan 71 189° 7.0 NM to Wallops Flight Facility. 34/8W.

H-101, 121, L-361

VOR unusable:

005°-020° byd 25 NM blo 1,500'

020°-040° byd 20 NM blo 1,700'

040°-045° byd 10 NM blo 2,000'

210°-225° byd 13 NM blo 4,000'

210°-225° byd 18 NM blo 6,000'

210°-225° byd 37 NM

225°-265° byd 10 NM blo 2,500'

225°-265° byd 30 NM blo 9,000'

265°-005° byd 20 NM blo 1,500'

TACAN AZIMUTH OTS