

**BOSTON**

**GENERAL EDWARD LAWRENCE LOGAN INTL (BOS)(KBOS) 1 E UTC-5(-4DT)**

**NEW YORK  
COPTER  
H-10J, 11D, 12K, L-33D, 34J  
IAP, AD**

N42°21.78' W71°00.38'

19 B LRA Class I, ARFF Index E NOTAM FILE BOS

**RWY 15R-33L:** H10083X150 (ASPH-GRVD) S-120, D-250, 2S-175, 2D-550 PCN 90 F/C/W/T HIRL CL

**RWY 15R:** MALSR. TDZL. PAPI(P4L)—GA 3.0° TCH 71'. RVR-TMR Thld dsplcd 882'. Trees.

**RWY 33L:** ALSF2. TDZL. PAPI(P4R)—GA 3.0° TCH 68'. RVR-TMR Boat.

**RWY 04R-22L:** H10006X150 (ASPH-GRVD) S-120, D-250, 2S-175, 2D-550 PCN 90 F/C/W/T HIRL CL

**RWY 04R:** ALSF2. TDZL. PAPI(P4L)—GA 3.0° TCH 67'. RVR-TMR Thld dsplcd 1155'. Boat.

**RWY 22L:** MALSF. PAPI(P4R)—GA 3.0° TCH 71'. RVR-TMR Thld dsplcd 1199'. Boat.

**RWY 04L-22R:** H7864X150 (ASPH-GRVD) S-120, D-250, 2S-175, 2D-550 PCN 90 F/C/W/T HIRL CL

**RWY 04L:** REIL. PAPI(P4L)—GA 3.0° TCH 50'. RVR-TR Boat.

**RWY 22R:** PAPI(P4L)—GA 3.0° TCH 50'. RVR-TR Thld dsplcd 819'. Boat.

**RWY 09-27:** H7001X150 (ASPH-GRVD) S-120, D-250, 2S-175, 2D-550 PCN 90 F/C/W/T HIRL CL

**RWY 09:** RVR-TR Boat.

**RWY 27:** REIL. PAPI(P4L)—GA 3.0° TCH 71'. RVR-TR Boat.

**RWY 14-32:** H5000X100 (ASPH-GRVD) S-120, D-250, 2S-175, 2D-490 PCN 85 F/C/W/T HIRL

**RWY 14:** Bldg.

**RWY 32:** REIL. PAPI(P4L)—GA 3.0° TCH 45'.

**RWY 15L-33R:** H2557X100 (ASPH) S-120, D-250, 2S-175, 2D-550 PCN 90 F/C/W/T MIRL

**RWY 33R:** PAPI(P4R)—GA 3.0° TCH 40'.

**LAND AND HOLD-SHORT OPERATIONS**

LDG RWY	HOLD-SHORT POINT	AVBL LDG DIST
RWY 04L	15L-33R	5250
RWY 15R	09-27	6800
RWY 22L	09-27	6400
RWY 27	04R-22L	5650

**RUNWAY DECLARED DISTANCE INFORMATION**

<b>RWY 04L:</b> TORA-7864 TODA-7864 ASDA-7864 LDA-7864
<b>RWY 04R:</b> TORA-10006 TODA-10006 ASDA-10006 LDA-8851
<b>RWY 09:</b> TORA-7001 TODA-7001 ASDA-7001 LDA-7001
<b>RWY 14:</b> TORA-5000 TODA-5000 ASDA-5000 LDA-5000
<b>RWY 15L:</b> TORA-2557 TODA-2557 ASDA-2557 LDA-2557
<b>RWY 15R:</b> TORA-10083 TODA-10083 ASDA-10083 LDA-9202
<b>RWY 22L:</b> TORA-10006 TODA-10006 ASDA-10006 LDA-8806
<b>RWY 22R:</b> TORA-7864 TODA-7864 ASDA-7864 LDA-7046
<b>RWY 27:</b> TORA-7001 TODA-7001 ASDA-7001 LDA-7001
<b>RWY 32:</b> TORA-5000 TODA-5000 ASDA-5000 LDA-5000
<b>RWY 33L:</b> TORA-10083 TODA-10083 ASDA-10083 LDA-10083
<b>RWY 33R:</b> TORA-2557 TODA-2557 ASDA-2557 LDA-2557

**ARRESTING GEAR/SYSTEM**

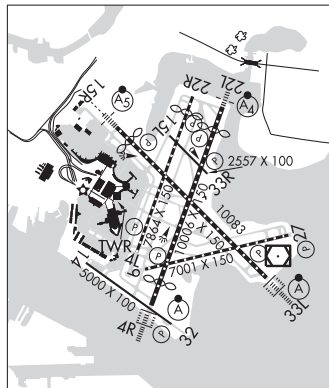
**RWY 04L:** EMAS

**RWY 15R:** EMAS

**SERVICE:** S4 **FUEL** 100LL, JET A **OX** 1, 2, 3, 4 **LGT** Rwy status lights in operation. Rwy 22L VGSI unusable byd 7 degs left of centerline.

**NOISE:** Noise sensitive area; Hel op wi ctzl are reqd to maint the highest psbl alt. 0500-1100Z† Rwy 15R preferred for tkof; Rwy 33L preferred for lngd. Noise abatement proc Mon-Fri 1400-2200Z†—617-561-1636.

**AIRPORT REMARKS:** Attended continuously. Birds on and invof arpt. Numerous cranes on and invof arpt. Rwy 14-32 unidirectional, no ldgs Rwy 14, no tkfs Rwy 32. International ramp arrivals must obtain a gate assignment from international ramp control before entering ramp area. No remaining overnight parking for non-tenant charter acft without prior Massport permission. ASDE-X in use. Operate transponders with altitude reporting mode and ADS-B (if equipped) enabled on all airport surfaces. Terminal E, North and South Cargo arrivals ctc Massport Gate Control on 131.1 before entering/departing ramp area. Pilots should complete all calculations prior to pushback from gate. Ldg fee. Flight Notification Service (ADCUS) available.



**CONTINUED ON NEXT PAGE**

## CONTINUED FROM PRECEDING PAGE

AIRPORT MANAGER: 617-567-5400

WEATHER DATA SOURCES: ASOS 135.0 (617) 567-5762. TDWR.

COMMUNICATIONS: D-ATIS APP 135.0 D-ATIS DEP 135.0 (617) 455-3003 UNICOM 122.95

BOSTON RCO 122.4 122.1R 112.7T (BRIDGEPORT RADIO)

Ⓡ BOSTON APP/DEP CON 127.2 (South) 120.6 (West) 118.25 (North)

Ⓡ BOSTON DEP CON 133.0

BOSTON TOWER 128.8 (West) 132.225 (East) 124.725 (Helicopters)

GND CON 121.9 121.75 CLNC DEL 121.65

PRE TAXI CLNC 121.65 RAMP CTL 134.05

CPDLC (LOGON KUSA)

PDC

AIRSPACE: CLASS B See VFR Terminal Area Chart.

VOR TEST FACILITY (VOT) 111.0

RADIO AIDS TO NAVIGATION: NOTAM FILE BOS.

BOSTON (VH) (DH) VOR/DME 112.7 BOS Chan 74 N42°21.45' W70°59.37' at fld. 18/16W.

VOR unusable:

043°-053° byd 40 NM blo 5,000'

043°-053° byd 74 NM

055°-065° byd 40 NM blo 5,000'

055°-065° byd 47 NM

061°-104° byd 18 NM blo 2,000'

070°-108° byd 40 NM

109°-119° byd 40 NM blo 6,000'

109°-119° byd 58 NM

120°-148° byd 40 NM

149°-167° byd 40 NM blo 2,100'

149°-167° byd 83 NM

168°-177° byd 40 NM

178°-188° byd 40 NM blo 11,000'

178°-188° byd 50 NM

204°-262° byd 40 NM

263°-273° byd 40 NM blo 4,000'

263°-273° byd 54 NM

271°-060° byd 25 NM blo 3,500'

274°-337° byd 40 NM

350°-042° byd 40 NM

DME unusable:

061°-104° byd 18 NM blo 2,000'

271°-060° byd 25 NM blo 3,500'

ILS/DME 110.3 I-BOS Chan 40 Rwy 04R. Class IIIE.

ILS/DME 110.7 I-MDC Chan 44 Rwy 15R. Class IC. Localizer offset angle 001° 35 min.

ILS/DME 110.3 I-LQN Chan 40 Rwy 22L. Class IT. Note \*DME also serves Rwy 04R.

ILS/DME 111.3 I-DGU Chan 50 Rwy 27. Class IE.

ILS/DME 110.7 I-LIP Chan 44 Rwy 33L. Class IIIE. LOC unsl byd 33° left side of course.

COMM/NAV/WEATHER REMARKS: DME Channel 40 located 2171' from stop end Rwy 04R and 260' left of centerline is common to Rwy 22L.

---

**CAPE COD** (See MARSTON MILLS on page 135)

---