

WHITE PLAINS

WESTCHESTER CO (HPN)(KHPN) 3 NE UTC-5(-4DT) N41°04.02' W73°42.45'

NEW YORK

439 B LRA ARFF Index—See Remarks NOTAM FILE HPN

COPTER

RWY 16-34: H6549X150 (ASPH-GRVD) D-120, 2S-152

H-101, 12J, L-33B, 34H

PCR 537 F/B/W/T HIRL CL 0.9% up NW

IAP, AD

RWY 16: MALSR. TDZL. PAPI(P4L)—GA 3.0° TCH 55'. RVR-T

RWY 34: REIL. PAPI(P4L)—GA 3.0° TCH 56'. RVR-R Bldg.

RWY 11-29: H4451X150 (ASPH-GRVD) S-70, D-120, 2S-152,

2D-120 PCN 28 F/B/X/U MIRL

RWY 11: REIL. PAPI(P4L)—GA 3.0° TCH 54'.

RWY 29: Thld dspclcd 1292'. Trees.

LAND AND HOLD—SHORT OPERATIONS

LDG RWY	HOLD—SHORT POINT	AVBL LDG DIST
RWY 11	16-34	2500
RWY 16	11-29	4000

RUNWAY DECLARED DISTANCE INFORMATION

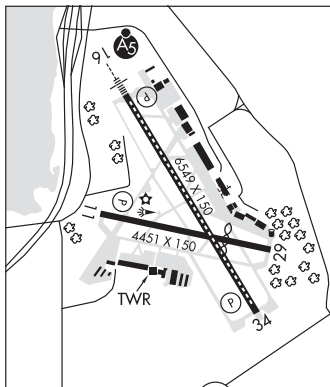
RWY 11: TORA-4451 TODA-4451 ASDA-4451 LDA-4451

RWY 16: TORA-6549 TODA-6549 ASDA-6549 LDA-6549

RWY 29: TORA-4451 TODA-4451 ASDA-4451 LDA-3159

RWY 34: TORA-6549 TODA-6549 ASDA-6549 LDA-6549

SERVICE: S4 FUEL 100LL, JET A OX 1, 2, 3, 4 LGT When ATCT clsd
ACTVT MALSR Rwy 16; REIL Rwy 11 and Rwy 34; TDZ lghts Rwy 16;
cntrln lghts Rwy 16-34; HIRL Rwy 16-34; MIRL Rwy 11-29; twy
lghts—CTAF.



NOISE: Noise abatement procedures in effect ctc arpt management 914-995-4861. Four designated helicopter routes in use for noise abatement. NOTE: See Special Notices—Westchester Co Noise Abatement Procedures.

AIRPORT REMARKS: Attended continuously. Deer, birds and other wildlife on and in vof arpt. Class I, ARFF Index B. FAR 139 ARFF Index C is rstrd to max acct len of 130' when openg at main terminal, Gates 1 thru 6. Rwy 11-29 clsd to sked acr ops with more than 9 pax seats and non sked acr ops with more than 30 pax seats exc for tax. Rwy 11-29 dly closures for staging and/or prkg of sked ACR. Rwy 29 clsd to ldg acct more than 12,500 lbs. Snow removal equipment operating on all acct movement areas Nov thru Apr. Lighter than air aircraft rstrd fm opns at arpt. Mowing within safety areas of all rws and twys May thru Nov. Equipment and materials staged adjacent to the southern edge of Hangar 6 ramp. Acft oprg with MGTOW over 120,000 lbs must have prior permission. Ctc arpt opns for PPR link, call 914-995-4850. All apvd acct must ctc arpt opns on UNICOM with actual tkof and ldg wts. ATC clnc rprd for pushback onto movement areas. Hangar D3 ramp adj to active pax loading area at main terminal ramp, acct requested use minimum thrust and avoid excess power and jet blast. Rwy 11 aiming point markings. Ldg fee. Flight Notification Service (ADCUS) available.

AIRPORT MANAGER: 914-995-4887

WEATHER DATA SOURCES: ASOS (914) 288-0216 WSP.

COMMUNICATIONS: D-ATIS 133.8 914-948-0130 CTAF 118.575 UNICOM 122.95

Ⓡ NEW YORK APP CON 126.4 (1200-0400Z‡) 120.8 (0400-1200Z‡)

Ⓡ NEW YORK DEP CON 120.55

TOWER 118.575 (1100-0400Z‡) **GND CON** 121.825

CLNC DEL 127.25 **CLNC DEL** 126.4 (When HPN twr clsd)

CPDLC (LOGON KUSA)

PDC

CLEARANCE DELIVERY PHONE: For CD when ATCT clsd ctc New York Apch on 126.4, if a call 516-683-2849.

AIRSPACE: CLASS D svc 1100-0400Z‡; other times CLASS E.

RADIO AIDS TO NAVIGATION: NOTAM FILE ISP.

CARMEL (L) (L) VOR/DME 116.6 CMK Chan 113 N41°16.81' W73°34.88' 216° 14.0 NM to fld. 693/12W.

VOR unusable:

001°-155°

195°-225°

245°-270°

325°-355°

DME unusable:

000°-015° byd 20 NM

034°-054° byd 20 NM

055°-135° byd 20 NM blo 5,000'

180°-200°

340°-359° byd 20 NM blo 6,000'

ILS/DME 109.7 I-HPN Chan 34 Rwy 16. Class IIE.

ILS/DME 109.7 I-OJZ Chan 34 Rwy 34. Class IT. LOC unusable byd 28° left of course and 25° right of course.

COMM/NAV/WEATHER REMARKS: ATIS can also be received via CMK VOR frequency 116.6 (CARMEL)

WHITFORDS (See WEEDSPORT on page 258)