

GROTON (NEW LONDON)**GROTON—NEW LONDON** (GON)(KGON) P (ARNG) 3 SE UTC-5(-4DT) N41°19.80'**NEW YORK**

H-101, 12K, L-33C, 341

IAP, AD

W72°02.71'

9 B TPA—See Remarks LRA Class IV, ARFF Index A NOTAM FILE GON

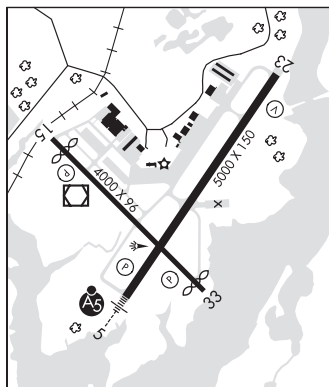
RWY 05-23: H5000X150 (ASPH-GRVD) S-90, D-113, 2S-143, 2D-200 PCN 46 F/C/X/T HIRL**RWY 05:** MALSR. PAPI(P4L)—GA 3.0° TCH 40'. RVR-T**RWY 23:** REIL. VASI(V4L)—GA 3.0° TCH 49'. RVR-R Tree.**RWY 15-33:** H4000X96 (ASPH-GRVD) S-90, D-113, 2S-143 PCN 12 R/C/X/T HIRL**RWY 15:** PAPI(P4R)—GA 4.0° TCH 45'. Thld dsplcd 307'. Tree.**RWY 33:** REIL. PAPI(P4L)—GA 3.75° TCH 34'. Thld dsplcd 205'. Trees.**RUNWAY DECLARED DISTANCE INFORMATION****RWY 05:** TORA-5000 TODA-5000 ASDA-5000 LDA-5000**RWY 15:** TORA-4000 TODA-4000 ASDA-3798 LDA-3491**RWY 23:** TORA-5000 TODA-5000 ASDA-5000 LDA-5000**RWY 33:** TORA-4000 TODA-4000 ASDA-3871 LDA-3666**ARRESTING GEAR/SYSTEM****RWY 05:** EMAS**RWY 23:** EMAS**SERVICE:** S4 FUEL 100LL, JET A OX 1, 2, 3, 4 LGT When twr clsd ACTIVATE HIRL Rws 05-23 and 15-33, MALSR Rwy05—CTAF. **MILITARY—A-GEAR** Rwy 05 EMAS 130' x 162'. Rwy 23 EMAS 340' x 162'. **FUEL** (NC-100LL, A. After hr fuel, call before 0200Z† day of arr C860-715-8800.)**NOISE:** Noise abatement procs in effect are as flws: Rwy 05: turn left hdg 020° til rchg 1000', then on crs; Rwy 23: turn left hdg 210° til rchg 1000', then on crs; Rwy 33: fly rwy hdg until rchg 1000', then on crs.**AIRPORT REMARKS:** Attended 1100-0200Z†. Deer, birds and waterfowl on and in/ovf arpt. For fuel after hrs call before 2100 lcl day of arr, 860-715-8800. Conditions not monitored from 1800 local to 0600 local, Monday through Friday, and from 1500 local to 0700 local, Saturday through Sunday. Tran pilots at general aviation ramp exit and re-enter arpt via pilot pedestrian gate adjacent to main terminal with posted gate lock combination. This gate is lgtd with electronic surveillance 24 hrs a day. Clsd to unscheduled air carrier ops with more than 30 pax seats exc 48 hr PPR call 860-250-4701. No touch and go ops are permitted btn 0300-1100Z†. Practice apchs/full-stop/touch and go lds prohibited by pure jet acft and acft weighing 12,500 lbs and over exc by written apvl from the Connecticut Arpt Authority. TPA—1009 (1000) lgt acft, 1509 (1500) all turbine powered acft. Terminal aerodrome forecast svc avbl. Rwy 23 nr not std. Ldg fee for business, corporate and revenue producing acft. Flight Notification Service (ADCUS) avbl. U.S. Customs svc avbl with 6 hr PPR call Mon-Fri 1300-2100Z† on 203-773-2040 (or toll free in the U.S. 1-800-973-2867) and from Canada 407-975-1740. Call before 2000Z† on Fri for weekend or holiday svc requests.**AIRPORT MANAGER:** 860-841-9664**WEATHER DATA SOURCES:** ASOS 127.0 (860) 449-8921. LAWRs.**COMMUNICATIONS:** CTAF 125.6 ATIS 127.0Ⓡ **PROVIDENCE APP/DEP CON** 125.75 (Sun-Fri 1030-0530Z† Sat 1030-0500Z† other times ctc)Ⓡ **BOSTON CENTER APP/DEP CON** 124.85**TOWER** 125.6 (1200-0300Z†) **GND CON** 121.65 **CLNC DEL** 121.65 119.85**CLEARANCE DELIVERY PHONE:** For CD when Apch clsd ctc Boston ARTCC at 603-879-6859.**AIRSPACE:** CLASS D svc 1200-0300Z†; other times CLASS G.**VOR TEST FACILITY (VOT)** 110.25**RADIO AIDS TO NAVIGATION:** NOTAM FILE GON.(T) (T) **VOR/DME** 110.85 GON Chan 45(Y) N41°19.82' W72°03.12' at fld. 9/14W.

VOR portion unusable:

241°-265° blo 5,000'

DME unusable:

355°-019° blo 3,000'

ILS/DME 111.3 I-GON Chan 50 Rwy 05. Class IT. Unmonitored when ATCT closed.**GROTON—NEW LONDON** (See GROTON (NEW LONDON) on page 36)