

**HELENA RGNL** (HLN)(KHLN) P (ARNG) 2 NE UTC-7(-6DT) N46°36.40' W111°59.00'

3877 B LRA Class I, ARFF Index B NOTAM FILE HLN MON Airport

**RWY 09-27:** H9000X150 (ASPH-PFC) D-160, 2S-175, 2D-250,  
2D/2D2-420 PCN 50 F/C/X/U HIRL

**RWY 09:** REIL. PAPI(P4L)—GA 3.3° TCH 55'. Ground. 0.3% down.

**RWY 27:** MALSR. PAPI(P4L)—GA 3.0° TCH 55'. Rgt tfc.

**RWY 05-23:** H4644X75 (ASPH-PFC) S-21, D-30 PCN 6 F/C/X/U  
MIRL 1.2% up SW

**RWY 05:** PAPI(P2L)—GA 3.0° TCH 40'. Road.

**RWY 23:** PAPI(P2L)—GA 3.0° TCH 49'. Fence. Rgt tfc.

**RWY 17-35:** H2989X75 (ASPH-PFC) PCN 5 F/C/X/U MIRL  
1.7% up SE

**RWY 17:** REIL.

**RWY 35:** REIL. Ground. Rgt tfc.

**RWY 10-28:** 1584X75 (TURF) 0.3% up W

**RUNWAY DECLARED DISTANCE INFORMATION**

**RWY 05:** TORA-4644 TODA-4644 ASDA-4644 LDA-4644

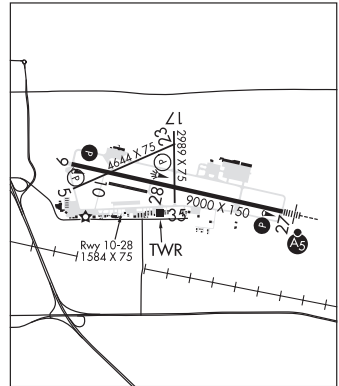
**RWY 09:** TORA-9000 TODA-9000 ASDA-9000 LDA-9000

**RWY 17:** TORA-2989 TODA-2989 ASDA-2989 LDA-2989

**RWY 23:** TORA-4644 TODA-4644 ASDA-4644 LDA-4644

**RWY 27:** TORA-9000 TODA-9000 ASDA-9000 LDA-9000

**RWY 35:** TORA-2989 TODA-2989 ASDA-2989 LDA-2989



**SERVICE:** S4 **FUEL** 100, 100LL, JET A **OX** 1, 3 **LGT** When twr clsd **ACTIVATE** MALSR Rwy 27, REIL Rwy 09, Rwy 17 and Rwy 35, PAPI Rwy 09 and Rwy 27, HIRL Rwy 09-27, MIRL Rwy 05-23 and Rwy 17-35—CTAF. **MILITARY— FUEL** A+ (C406-442-2190. Opr 1200-0600Z†, OT \$125 fee) (NC-80, 100, 100LL)

**AIRPORT REMARKS:** Attended 1200-0800Z†. ARFF coverage provided for scheduled Part 121 air carriers only exc with prior apvl, call 406-442-2821. Ldg rgts cstms avbl call 406-449-5506. Cold temperature airport. Altitude correction required at or below -17C. Rwy 17-35 and Rwy 05-23 (exc btn Twy F and Rwy 09-27) not avbl for air carrier use by acft with greater than 30 pax seats. Twy A, Twy B, and Twy C (btn Twy A and Rwy 35) not avbl for air carrier use by acft with greater than 30 pax seats. Ldg fee for all coml acft and all acft over 10,000 lbs. Flight Notification Service (ADCUS) avbl. NOTE: See SPECIAL NOTICE.

**MILITARY REMARKS:** ARNG Opr Mon-Fri 1400-0030Z† Mon-Fri, exc hol. Exercise caution while taxiing. AASF ramp not stressed for large acft. Ctc fit ops for ramp advisory 126.2, DSN 406-324-5775, C406-324-5775. No tran svc Sat, Sun, hol or after 2300Z† Mon-Fri. Ft Harrison AAF (MT15) within Class D contact MT ARNG ops C406-324-5775/76 DSN 324-5775/76 for parapdrop operations information and hours.

**AIRPORT MANAGER:** 406-442-2821

**WEATHER DATA SOURCES:** ASOS 120.4 (406) 443-4317.

**COMMUNICATIONS:** CTAF 118.3 ATIS 120.4 UNICOM 122.95

RCO 122.2 (GREAT FALLS RADIO)

Ⓡ APP/DEP CON 119.5 229.4 (1300-0500Z†)

Ⓡ SALT LAKE CENTER APP/DEP CON 133.4 285.4 (0500-1300Z†)

TOWER 118.3 257.8 (1300-0500Z†) GND CON 121.9

ARNG OPS 40.65 126.2 321.45

**CLEARANCE DELIVERY PHONE:** For CD if una to ctc on FSS freq, ctc Salt Lake ARTCC at 801-320-2568.

**CONTINUED ON NEXT PAGE**

## CONTINUED FROM PRECEDING PAGE

**AIRSPACE: CLASS D** svc 1300-0500Z±, other times CLASS E.

**RADIO AIDS TO NAVIGATION:** NOTAM FILE HLN.

**(VH) (H) VORTACW** 117.7 HLN Chan 124 N46°36.41' W111°57.21' 258° 1.2 NM to fld. 3826/12E.

VOR unusable:

039°-054° byd 35 NM blo 12,000'  
 074°-084° byd 40 NM blo28,000'  
 086°-090° byd 40 NM  
 091°-101° byd 40 NM blo 18,000'  
 102°-108° byd 47 NM  
 102°-108°byd 40 NM blo 10,800'  
 109°-169° byd 25 NM blo 17,000'  
 166°-258° byd 40 NM  
 169°-189° byd 25 NM blo 13,500'  
 189°-234° byd 25 NM blo 13,500'  
 207°-217° byd 22 NM blo13,000'  
 234°-274° byd 25 NM blo12,500'  
 259°-263° byd 40 NM blo 13,000'  
 259°-279° byd 60 NM blo 18,000'  
 259°-279° byd 65 NM blo 28,000'  
 280°-293° byd 40 NM  
 294°-304° byd 87 NM  
 298°-308° byd 40 NM blo 15,500'  
 309°-334° byd 40 NM  
 335°-345° byd 40 NM blo 9,500'  
 335°-345° byd 56 NM

TACAN AZIMUTH unusable:

039°-074° byd 35 NM blo 13,000'  
 109°-154° byd 15 NM  
 154°-169° byd 15 NM blo 17,000'  
 169°-189° byd 25 NM blo 13,500'  
 189°-214° byd 15 NM  
 204°-354° byd 25 blo 14,000'  
 214°-254° byd 15 NM blo 17,500'  
 324°-039° byd 25 NM blo 13,000'

DME unusable:

035°-070° byd 35 NM blo 13,000'  
 105°-210° byd 25 NM  
 109°-154° byd 25 NM  
 109°-214° byd 15 NM blo 11,000'  
 109°-214° byd 20 NM blo 12,000'  
 154°-169° byd 25 NM blo 17,000'  
 165°-185° byd 25 NM blo 13,500'  
 189°-214° byd 25 NM  
 207°-217° 22 NM blo 13,000'  
 214°-254° byd 15 NM blo 12,000'  
 214°-254° byd 25 NM blo 17,000'  
 250°-300° byd 25 NM blo 14,000'  
 320°-035° byd 25 NM blo 13,000'

VOR unusable:

360°-069° byd 40 NM  
 342°-359° byd 40 NM

**HAUSER NDB (MHW)** 386 HAU N46°34.13' W111°45.48' 272° 9.6 NM to fld. 4026/12E. NDB unmonitored when HLN ATCT clsd.

**ILS 110.1** I-HLN Rwy 27. Class IE. Unmonitored when ATCT closed. Localizer backcourse unusable byd 22° rgt of course, unusable within 2.7 DME.

**HELLER FARM** (See WINIFRED on page 148)

**HINSDALE** (6U5) 0 SE UTC-7(-6DT) N48°23.28' W107°05.00'

**BILLINGS**

2220 NOTAM FILE GTF

**RWY 07-25:** 2200X75 (TURF) 0.7% up W

**RWY 07:** Road.

**RWY 10-28:** 2160X200 (TURF) 0.3% up W

**RWY 10:** Road.

**RWY 16-34:** 1960X75 (TURF) 1.5% up S

**RWY 16:** Pole.

**RWY 34:** Pole.

**AIRPORT REMARKS:** Unattended. Hay bales and farm equipment adjacent to rwy. Rws soft when wet. Rwy 07-25, Rwy 10-28 and Rwy 16-34 marked with white cones full length of rwy.

CONTINUED ON NEXT PAGE