

**ONTARIO MUNI** (ONO)(KONO) 3 W UTC-7(-6DT) N44°01.16' W117°00.78'

KLAMATH FALLS

2193 B NOTAM FILE ONO

H-1C, L-11B

**RWY 15-33:** H5006X100 (ASPH) S-30, D-60 MIRL

IAP

**RWY 15:** REIL. PAPI(P2L)—GA 3.0° TCH 40'. Road.

**RWY 33:** REIL. PAPI(P2L)—GA 3.0° TCH 40'.

**SERVICE:** S4 **FUEL** 100LL, JET A **LGT** ACTIVATE REIL Rwy 15 and Rwy 33, MIRL Rwy 15-33—CTAF. PAPI Rwy 15 and Rwy 33 opr continuously.

**AIRPORT REMARKS:** Attended 1500-0000Z. Self serve card lock fuel avbl 24 hrs. Rwy 15 designated as calm winds rwy. Rwy 15-33 extended south end. Gldr ops sfc-5000 ft Fri-Sat 1800-0000Z (wx pmtd) Mar-Oct. NOTAMS will be issued when activ. Gldr will oper on westside of AP and will utilize grass rwy adj to Rwy 15-33 on westside. Call amgr at 541-709-7651 for any qns/concerns.

**AIRPORT MANAGER:** 541-709-7651

**WEATHER DATA SOURCES:** ASOS 135.275 (541) 889-7388.

**COMMUNICATIONS:** CTAF/UNICOM 122.8

**ONTARIO RCO 122.3** (MC MINNVILLE RADIO)

Ⓡ **SALT LAKE CENTER APP/DEP CON** 128.05

**CLEARANCE DELIVERY PHONE:** For CD ctc Salt Lake ARTCC at 801-320-2568.

**RADIO AIDS TO NAVIGATION:** NOTAM FILE BOI.

**BOISE (VH) (H) VORTACW** 113.3 BOI Chan 80 N43°33.17'

W116°11.53' 291° 45.3 NM to fld. 2877/17E.

VOR unusable:

001°-044° byd 22 NM blo 11,000'

001°-044° byd 32 NM blo 14,500'

023°-033° byd 40 NM blo 15,500'

023°-033° byd 50 NM blo 18,000'

034°-081° byd 40 NM

045°-071° byd 32 NM blo 12,500'

072°-084° byd 32 NM blo 10,500'

082°-092° byd 40 NM blo 11,500'

082°-092° byd 53 NM blo 14,000'

082°-092° byd 71 NM blo 18,000'

093°-107° byd 40 NM

108°-118° byd 40 NM blo 9,500'

108°-118° byd 56 NM

119°-210° byd 40 NM

211°-221° byd 40 NM blo 9,400'

211°-221° byd 52 NM

222°-233° byd 40 NM

273°-283° byd 40 NM blo 6,000'

273°-283° byd 69 NM blo 9,000'

273°-283° byd 88 NM

284°-295° byd 40 NM

TACAN AZIMUTH unusable:

010°-060° byd 12 NM blo 13,000'

010°-060° byd 27 NM blo 15,500'

113°-155° byd 30 NM blo 7,000'

348°-010° byd 20 NM blo 13,000'

348°-010° byd 27 NM blo 15,500'

DME unusable:

010°-060° byd 12 NM blo 13,000'

010°-060° byd 27 NM blo 15,500'

113°-155° byd 30 NM blo 7,000'

348°-010° byd 20 NM blo 13,000'

348°-010° byd 27 NM blo 15,500'

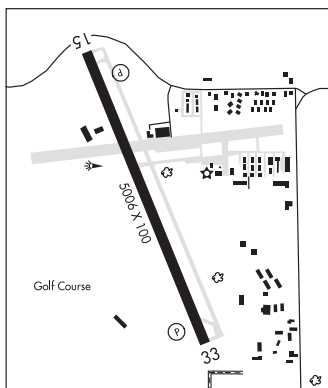
VOR unusable:

296°-309° byd 40 NM blo 5,500'

296°-309° byd 46 NM blo 9,000'

296°-309° byd 84 NM blo 18,000'

315°-022° byd 40 NM



**OWYHEE RESERVOIR STATE** (28U) 25 SW UTC-8(-7DT) N43°25.49' W117°20.74'

KLAMATH FALLS

2680 NOTAM FILE MMV

**RWY 13-31:** 1840X30 (DIRT)

**AIRPORT REMARKS:** Unattended. Owner advises ctc with State Department of Aviation 503-378-4880 prior to use. Remote arpt, no ground access. Arpt in canyon, surrounded by high terrain. 4' brush growth within 20' of rwy edge. Rwy 13-31 irregular maintenance. Rwy surface frequently rough and rutted. Sur conds not rptd.

CONTINUED ON NEXT PAGE

NW, 16 MAY 2024 to 11 JUL 2024

CONTINUED FROM PRECEDING PAGE

AIRPORT MANAGER: 503-378-4880  
 COMMUNICATIONS: CTAF 122.9  
 CLEARANCE DELIVERY PHONE: For CD ctc Salt Lake ARTCC at 801-320-2568.

**PACIFIC CITY STATE (PFC)(KPCF)** 1 S UTC-8(-7DT) N45°11.96' W123°57.71' SEATTLE

10 NOTAM FILE MMV  
**RWY 14-32:** H1860X30 (ASPH) S-7  
**RWY 14:** Tree.

**AIRPORT REMARKS:** Unattended. Owner advises ctc with Department of Aviation 503-378-4880 prior to use. Rwy may be under water dur winter high tides. Ocnl driftwood on rwy due to flooding. Sfc conds not rptd. Downwind lds not recommended and may not be possible. Many close in obst on both sides of rwy. Exp low level turbulence dur crosswind cond. Assorted trees and 40' p-line at 500' north of rwy. Pre-ktof engine run-ups to be conducted at the parking ramp only.

AIRPORT MANAGER: 503-378-4880  
 COMMUNICATIONS: CTAF 122.9  
 CLEARANCE DELIVERY PHONE: For CD ctc Seattle ARTCC at 253-351-3694.

**PAISLEY (22S)** 3 NW UTC-8(-7DT) N42°43.08' W120°33.77' KLAMATH FALLS

4395 B NOTAM FILE MMV  
**RWY 13-31:** H4300X60 (ASPH) LIRL 0.4% up SE  
**AIRPORT REMARKS:** Unattended. Rwy 13 has aiming points.  
**AIRPORT MANAGER:** 541-947-4222  
 COMMUNICATIONS: CTAF 122.9

**CLEARANCE DELIVERY PHONE:** For CD ctc Seattle ARTCC at 253-351-3694.  
**RADIO AIDS TO NAVIGATION:** NOTAM FILE LKV.  
**LAKEVIEW (H) (H) VORTACW** 112.0 LKV Chan 57 N42°29.57' W120°30.43' 331° 13.7 NM to fld. 7465/19E.

**PENDELTON**

**EASTERN OREGON RGNL AT PENDELTON (PDT)(KPDTP) P (ARNG)** 3 NW UTC-8(-7DT) N45°41.71' SEATTLE

W118°50.60' H-1C, L-13A  
 1494 B NOTAM FILE PDT IAP, AD

**RWY 08-26:** H6301X150 (ASPH-PFC) S-115, D-132, 2D-210  
 PCN 34 F/B/Y/U HIRL  
**RWY 08:** ODALS. VASI(V4R)—GA 3.0° TCH 35'. RVR-R Ground.  
**RWY 26:** MALSR. PAPI(P4L)—GA 3.0° TCH 48'. RVR-T  
**RWY 11-29:** H4808X100 (ASPH-GRVD) S-70, D-120, 2S-152,  
 2D-122 PCN 18 F/B/Y/U MIRL  
**RWY 11:** REIL. PAPI(P4L)—GA 3.0° TCH 46'.  
**RWY 29:** REIL. PAPI(P4R)—GA 3.0° TCH 48'.

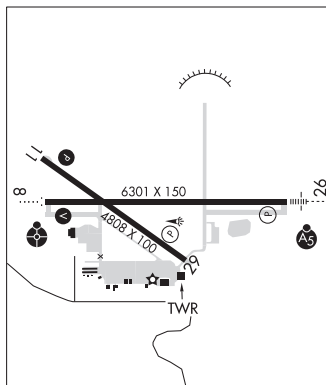
**RUNWAY DECLARED DISTANCE INFORMATION**

<b>RWY 08:</b>	TORA-6301	TODA-6301	ASDA-6301	LDA-6301
<b>RWY 11:</b>	TORA-4808	TODA-4808	ASDA-4808	LDA-4808
<b>RWY 26:</b>	TORA-6301	TODA-6301	ASDA-6301	LDA-6301
<b>RWY 29:</b>	TORA-4808	TODA-4808	ASDA-4808	LDA-4808

**SERVICE:** S4 FUEL 100LL, JET A1+, MOGAS LGT When ATCT clsd  
 ACTVT MALSR Rwy 26; ODALS Rwy 08; REIL Rwy 11 & 29; VASI  
 Rwy 08, PAPI Rwy 11; HIRL Rwy 08-26; MIRL Rwy 11-29—CTAF.  
 Rwy 11-29 PCL for hi inst 5 clicks only. PAPI Rwy 29 opr constly.  
 REIL Rwy 11 OTS. REIL Rwy 29 OTS. **MILITARY— FUEL** (NC-100LL,  
 A1+ - Self svc avbl H24.)

**AIRPORT REMARKS:** Attended 1400-0400Z†. Svcs avbl from FBO btn 0400-1400Z† by phone call 541-276-3313 or 541-310-9542. Self fueling cardlocks avbl 24 hrs. Clsd to unscheduled air carrier ops with more than 30 pax seats exc PPR 4 hrs call 541-276-4411. Deer on and invof arpt Apr and Aug especially mornings and evenings. Thld Rwy 29 nstd marking, portion of rwy to function as twy. Twy B clsd south of Twy A. Int of ramp and Rwy 29 north end of terminal bldg, area obstructed from view of twr by terminal bldg. Rwy 08-26 surface condition unmonitored 1400-0400Z†. Rwy 11-29 surface condition unmonitored 1400-0400Z†. Fqt dly UAS actvty (lge and small) inside and invof the CDAS.

**AIRPORT MANAGER:** 541-276-7754



CONTINUED ON NEXT PAGE