

HOQUIAM

BOWERMAN (HQM)(KHQM) 2 W UTC-8(-7DT) N46°58.27' W123°56.19'

SEATTLE
H-1B, L-1D
IAP

18 B LRA NOTAM FILE HQM

RWY 06-24: H5000X150 (ASPH) S-30, D-40, 2D-80 HIRL

RWY 06: REIL. PAPI(P4R)—GA 3.0° TCH 40'. Rgt tfc.

RWY 24: MALSR. PAPI(P4L)—GA 3.5° TCH 55'.

SERVICE: FUEL 100LL, JET A LGT ACTIVATE HIRL Rwy 06-24, PAPI Rwy 06-24, MALSR Rwy 24 and REIL Rwy 06—CTAF.

AIRPORT REMARKS: Unattended. 100LL and Jet A avbl 24 hrs a day with major credit card. Flocks of waterfowl on and invof arpt. 103' crane 0.2 NM southwest of AER 24. Svc road south of rwy in primary sfc.

Ultralights prohibited without written permission from arpt mgr.

AIRPORT MANAGER: 360-533-9544

WEATHER DATA SOURCES: ASOS 135.775 (360) 538-7021.

COMMUNICATIONS: CTAF/UNICOM 122.7

HOQUIAM RCO 122.2 (SEATTLE RADIO)

Ⓡ SEATTLE CENTER APP/DEP CON 128.3

CLEARANCE DELIVERY PHONE: For CD if una to ctc on FSS freq, ctc Seattle ARTCC at 253-351-3694.

AIRSPACE: CLASS E.

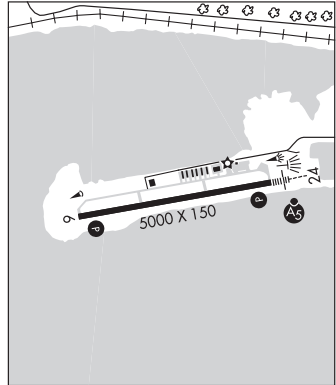
RADIO AIDS TO NAVIGATION: NOTAM FILE HQM.

HOQUIAM (VH) (H) VORTACW 117.7 HQM Chan 124 N46°56.82' W124°08.96' 062° 8.9 NM to fld. 10/19E.

VOR unusable:

- 017°-024° byd 40 NM
- 037°-042° byd 40 NM
- 053°-058° byd 40 NM
- 066°-079° byd 40 NM
- 081°-091° byd 40 NM blo 4,000'
- 081°-091° byd 55 NM blo 5,000'
- 081°-091° byd 62 NM
- 092°-137° byd 40 NM
- 154°-157° byd 40 NM
- 195°-208° byd 40 NM
- 268°-273° byd 40 NM
- 357°-004° byd 40 NM

ILS/DME 108.7 I-HQM Chan 24 Rwy 24. Class IT.



HOQUIAM N46°56.82' W124°08.96' NOTAM FILE HQM.

SEATTLE
H-1B, L-1D

(VH) (H) VORTACW 117.7 HQM Chan 124 062° 8.9 NM to Bowerman. 10/19E.

VOR unusable:

- 017°-024° byd 40 NM
- 037°-042° byd 40 NM
- 053°-058° byd 40 NM
- 066°-079° byd 40 NM
- 081°-091° byd 40 NM blo 4,000'
- 081°-091° byd 55 NM blo 5,000'
- 081°-091° byd 62 NM
- 092°-137° byd 40 NM
- 154°-157° byd 40 NM
- 195°-208° byd 40 NM
- 268°-273° byd 40 NM
- 357°-004° byd 40 NM

RCO 122.2 (SEATTLE RADIO)

HOSKINS FLD (See OLYMPIA on page 251)

ILWACO

PORT OF ILWACO (7W1) 2 E UTC-8(-7DT) N46°18.89' W124°00.23'

SEATTLE

13 B NOTAM FILE SEA

RWY 10-28: H2080X50 (ASPH) S-5

RWY 10: Trees.

RWY 28: PAPI(P2L)—GA 4.0°. Thld dsplcd 300'. Trees.

SERVICE: LGT Arpt bcn pilot activated.

AIRPORT REMARKS: Unattended. Rwy 10 markings faded. Rwy 28 markings faded.

AIRPORT MANAGER: 360-642-3143

COMMUNICATIONS: CTAF 122.9

CLEARANCE DELIVERY PHONE: For CD ctc Seattle ARTCC at 253-351-3694.