

**PATTERSON**

**HARRY P WILLIAMS MEML** (PTN)(KPTN) 2 NW UTC-6(-5DT) N29°42.57' W91°20.34'

HOUSTON

9 B LRA NOTAM FILE PTN

H-7D, L-21B, 22F, GOMC  
IAP

**RWY 06-24:** H5399X150 (ASPH) S-32 MIRL

**RWY 06:** REIL. PAPI(P2L)—GA 3.0° TCH 50'. Thld dspcd 394'. Trees.

**RWY 24:** MALSR. PAPI(P2L)—GA 3.0° TCH 50'. Rgt tfc.

**SERVICE:** S4 **FUEL** 100LL, **JET A** **LGT** Actvt MALSR Rwy 24; MIRL Rwy 06-24 preset med instst, to incr instst—CTAF.

**AIRPORT REMARKS:** Attended continuously. 4500' by 100' waterwy hdg 04-22 lctd 1100' south of conc rwy. Dual land/sea operation.

**AIRPORT MANAGER:** 337-828-4100

**WEATHER DATA SOURCES:** AWOS-3PT 134.575 (985) 395-6735.

**COMMUNICATIONS:** CTAF/UNICOM 122.8

**PATTERSON RCO** 122.5 (DE RIDDER RADIO)

Ⓡ **NEW ORLEANS APP/DEP CON** 124.3

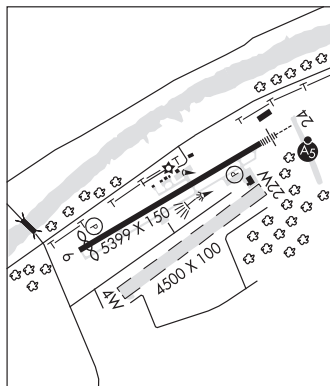
CLNC DEL 124.3

**CLEARANCE DELIVERY PHONE:** For CD ctc New Orleans Apch at 504-471-4350 or 124.3.

**RADIO AIDS TO NAVIGATION:** NOTAM FILE DRI.

**TIBBY (L) VOR/DME** 117.15 TBD Chan 118(Y) N29°39.86' W90°49.75' 274° 26.8 NM to fld. 10/2E.

**ILS/DME** 108.3 I-PTN Chan 20 Rwy 24. Class IA. ILS mnt by FBO durg NMI oprg hrs.



**WATERWAY 04W-22W:** 4500X100 (WATER)

**WATERWAY 04W:** Road. Rgt tfc.

**PETE ANTIE MUNI HELIPORT** (See MELVILLE on page 111)

**PINEVILLE MUNI** (2LØ) 2 N UTC-6(-5DT) N31°20.53' W92°26.61'

HOUSTON

100 B TPA—See Remarks NOTAM FILE DRI

L-21B, 22E

**RWY 18-36:** H3000X75 (ASPH) S-15.5 MIRL 0.5% up N

**RWY 18:** REIL. PAPI(P2L)—GA 4.0° TCH 68'. Trees.

**RWY 36:** REIL. PAPI(P2R)—GA 3.0° TCH 49'. Trees.

**SERVICE:** S4 **FUEL** 100LL, **MOGAS** **OX** 1, 2 **LGT** MIRL Rwy 18-36, REIL Rwy 18 and Rwy 36 preset low ints dusk-dawn. To increase ints ACTIVATE—CTAF. REILS OTS approach end Rwy 18. REILS OTS approach end Rwy 36.

**AIRPORT REMARKS:** Attended Mon-Fri 1400-0000Z±, Sat 1500-2000Z±. Fuel avbl 24/7 with credit card. Rwy 18 drop off 95' from end of rwy. Rwy 36 lake 96' from end of rwy. TPA-780 (700) actf for water Rwy 05W-23W, 1100 (1000) fixed wing for Rwy 18-36. All Rwy 18-36 safety areas NSTD. Rwy 18 and Rwy 36, rwy markings faded.

**AIRPORT MANAGER:** 318-449-5679

**COMMUNICATIONS:** CTAF/UNICOM 122.8

**CLEARANCE DELIVERY PHONE:** For CD ctc Polk Apch at 337-531-2352.

**RADIO AIDS TO NAVIGATION:** NOTAM FILE AEX.

**ALEXANDRIA (H) (H) VORTACW** 116.1 AEX Chan 108 N31°15.40' W92°30.06' 027° 5.9 NM to fld. 76/3E.

VOR unusable:

035°-065° blo 2,000'

066°-094° byd 35 NM blo 3,000'

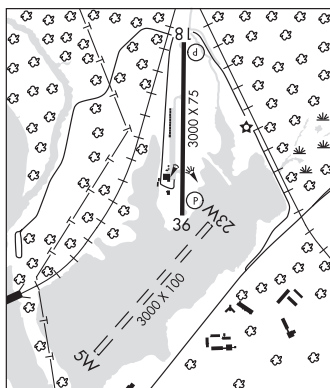
185°-200° byd 35 NM blo 3,000'

201°-214° byd 35 NM blo 2,000'

215°-260° blo 2,000'

261°-285° byd 35 NM blo 2,000'

357°-034° byd 35 NM blo 3,000'



**WATERWAY 05W-23W:** 3000X100 (WATER)

**WATERWAY 23W:** Rgt tfc.

**SEAPLANE REMARKS:** Waterway elevation 80'.