

**BIG SPRING MC MAHON—WRINKLE** (BPG)(KBPG) 2 SW UTC-6(-5DT) N32°12.76'**DALLAS—FT WORTH**

W101°31.30'

**H-66, L-6H**

2573 B NOTAM FILE BPG

**IAP****RWY 17-35:** H8802X100 (CONC) S-60, D-150, 2D-200 MIRL**RWY 17:** SSALS. PAPI(P4L)—GA 3.0° TCH 45'. Rgt tfc.**RWY 35:** PAPI(P4L)—GA 3.0° TCH 36'.**RWY 06-24:** H4601X75 (ASPH) MIRL 0.6% up NE**RWY 06:** PAPI(P2L)—GA 3.0° TCH 40'. Rgt tfc.**RWY 24:** PAPI(P2L)—GA 3.0° TCH 40'. Fence.**SERVICE:** S4 **FUEL** 100LL, JET A **LGT** MIRL Rwsy 06-24 and 17-35

preset low intst; to incr intst and actvt SSALS Rwy 17—CTAF.

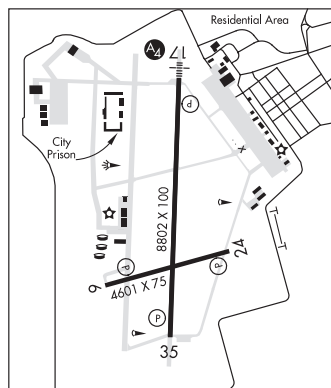
**AIRPORT REMARKS:** Attended Mon-Fri 1400-2300Z†. Prairie dogs on rwsy

and twys. Sandhill Cranes xng in the spring and fall. Fuel full and self

serve. FBO 432-264-7124. Aft hrs 432-935-1238.

**AIRPORT MANAGER:** 432-264-2362**WEATHER DATA SOURCES:** AWOS-3PT 118.025 (432) 264-7475.**COMMUNICATIONS:** CTAF/UNICOM 122.8**RCO** 122.4 (SAN ANGELO RADIO)Ⓡ **FORT WORTH CENTER APP/DEP CON** 133.7**CLEARANCE DELIVERY PHONE:** For CD ctc Fort Worth ARTCC at

817-858-7584.

**RADIO AIDS TO NAVIGATION:** NOTAM FILE BPG.(VL) (H) **VORTACW** 117.2 BGS Chan 119 N32°23.14' W101°29.02' 180° 10.5 NM to fld. 2670/11E.**BIGGS AAF (FORT BLISS)** (BIF)(KBIF) A 5 NE UTC-7(-6DT) N31°50.97' W106°22.80'**EL PASO**

3947 B LRA NOTAM FILE ABQ Not insp.

**H-4L, L-6H****RWY 04-22:** H13554X150 (CONC-GRVD) PCN 84 R/C/W/T HIRL**DIAP, AD****RWY 04:** REIL. PAPI(P4L)—GA 3.0° TCH 75'.**RWY 22:** SSALR. PAPI(P4L)—GA 3.0° TCH 75'. Rgt tfc.**ARRESTING GEAR/SYSTEM****RWY 04** BAK-14 BAK-12B(B) (1500').BAK-14 BAK-12B(B) (2100'). **RWY 22**

**SERVICE:** **FUEL** JET A++ **LGT** When unatndd ACTVT REIL Rwy 04; PAPI Rwy 04 and 22; HIRL Rwy 04-22—127.9. No twy edge lts at hot refuel area. SSALR OTS. **MILITARY—** JASU 4(A/M32A-86) 2(A/M32-95) **FUEL** A+ (1400-0600Z†, C915-779-2831, 2 hr PN, after hr call out fee \$150.) **FLUID SP TRAN ALERT** Opr 1300-0700Z† Mon-Fri, 1500-0700Z† Sat-Sun, exc hol.

**NOISE:** Noise abatement: VFR west arr/dep via mtn pass 15 NM NW of Biggs AAF. Avoid VFR ovft of city. Fly 1500' AGL, 1500' horizontal dist fm mtn dwellings.

**MILITARY REMARKS:** Attended Mon-Sun 1500-0700Z†, except holidays. See FLIP AP/1 Supplementary Arprt Remark. No de-ice avbl, no off fld trnsp avbl for aircrew, 24 hr notice for lav and water svcs, 915-525-7087. **RSTD** PPR all acct 24 hr prior notice ctc Airfield Ops DSN 621-8811/8330, C915-744-8811/8330. Twr and svcs avbl for all acct with PPR. PPR time valid +/- 1 hr. All acct ctc Afld Ops via PTD 30 min prior to arr. Flt Ops and Tran Alert svc unavbl bfr 1 hr prior to PPR sked arr. **CAUTION** El Paso Intl Rwy 22 2 NM SE can be mistaken for Biggs AAF Rwy 22. Coyote haz. **TFC PAT** Fixed Wing 5000(1052' AGL), Turbo Prop 5500(1552' AGL), Rotary Wing 4500(552' AGL), Jet 6000(2052' AGL).

**MISC** Approval required for access to ramp. Intl garbage cap ltd. Expect delays unless placed in garbage bags prior to arrival. Hangar space extremely limited for transient acct. KBIF auto obsn and BAAF USAF wx avbl 24/7, DSN 621-1215/1214, C915-744-1215/1214, OT 25th OWS, Davis-Monthan AFB, DSN 228-6598/6599. Class D airspace eff 1500-0700Z† Mon-Sun, exc hol. OT Class E intl garbage cap ltd. Must be bagged prior to arr. Twy L south of Twy F dsgnd for rotary wing acct only. Clsd circuit TV opns, tsnt acct civ-mil inbd ctc afld opns via ptd at 60nm prior to ldg. Closed circuit TV opns, tsnt acct Civ-Mil inbd ctc afld opns via PTD at 60 NM prior to ldg. Acft svc/trans alert will not support lcl, round robin or out and back for trans acct.

**AIRPORT MANAGER:** 915-744-8088**COMMUNICATIONS:** PTD 126.2Ⓡ **EL PASO APP CON** 119.15 353.5 (South-V16) 124.25 298.85 (North-V16)**TOWER** 127.9 342.25 (Mon-Sun 1500-0700Z†)**BLISS RDO** 134.1 237.2 (Open 24 hrs) **GND CON** 121.6 251.125Ⓡ **EL PASO DEP CON** 121.3 263.0**EL PASO CLNC DEL** 125.0 379.1 **PMSV** 373.7

CONTINUED ON NEXT PAGE

## CONTINUED FROM PRECEDING PAGE

**AIRSPACE:** CLASS D svc 1500-0700Z† Mon-Sun; other times CLASS E.

**RADIO AIDS TO NAVIGATION:** NOTAM FILE ABQ.

**NEWMAN (VL) (H) VORTACW** 112.4 EWM Chan 71 N31°57.11' W106°16.35' 210° 8.2 NM to fld. 4041/12E.

TACAN AZIMUTH unusable:

220°-255° byd 25 NM blo 12,000'

DME unusable:

220°-255° byd 25 NM blo 12,000'

VOR unusable:

001°-005° byd 40 NM

030°-034° byd 40 NM

042°-065° byd 40 NM

066°-084° byd 40 NM blo 18,000'

085°-130° byd 40 NM

243°-260° byd 40 NM

261°-279° byd 40 NM blo 18,000'

280°-290° byd 40 NM

304°-332° byd 40 NM

**ILS/DME** 110.9 I-BIF Chan 46 Rwy 22. Class IE.

**COMM/NAV/WEATHER REMARKS:** Radar—See Terminal FLIP for Radar Minima.

**BIRD DOG AIRFIELD** (See KRUM on page 356)

**BISHOP** (See DECATUR on page 293)

**BISHOP'S LANDING** (See CELINA on page 272)

**BISHOP-WINDHAM** (Ø7R) 3 NE UTC-6(-5DT) N27°36.61' W97°45.15'

**BROWNSVILLE**

55 B NOTAM FILE SJT

L-20H, 21A

**RWY 15-33:** H3200X50 (ASPH) S-12.5 MIRL

**RWY 15:** Road.

**RWY 33:** Road.

**SERVICE:** LGT Rwy 15-33 MIRLs OTS indefly.

**AIRPORT REMARKS:** Unattended. Intensive mil jet tfc 1300 ft AGL and abv from Kingsville NAS (NQI) 7 NM SW. Ctc Kingsville apch 119.9 for instrns.

**AIRPORT MANAGER:** 361-584-2567

**COMMUNICATIONS:** CTAF 122.9

**CLEARANCE DELIVERY PHONE:** For CD ctc Houston ARTCC at 281-230-5622.

**RADIO AIDS TO NAVIGATION:** NOTAM FILE CRP.

**CORPUS CHRISTI (VH) (H) VORTACW** 115.5 CRP Chan 102

N27°54.23' W97°26.69' 214° 24.0 NM to fld. 60/9E.

TACAN AZIMUTH & DME unusable:

024°-036° byd 35 NM blo 1,700'

037°-023° byd 35 NM blo 2,000'

265°-275°

VOR unusable:

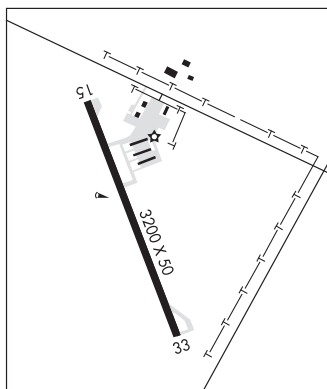
340°-005° byd 40 NM blo 7,000'

340°-005° byd 84 NM

Byd 30 NM blo 1,500'

TACAN AZIMUTH unusable:

080°-085° byd 30 NM



**BOERNE STAGE AIRFIELD** (See SAN ANTONIO on page 415)