

**COLEMAN MUNI** (COM)(KCOM) 2 NE UTC-6(-5DT) N31°50.47' W99°24.22'  
 1697 B NOTAM FILE FTW  
**RWY 15-33:** H4506X75 (ASPH) S-12.5 MIRL 0.4% up NW

**SAN ANTONIO**  
 L-19B  
 IAP

**RWY 15:** Road.  
**RWY 33:** Trees.

**SERVICE:** S4 **FUEL** 100LL, JET A **LGT** Rwy 15-33 MIRL preset to low, to incr ints and **ACTIVATE**—CTAF.

**AIRPORT REMARKS:** Attended Mon-Fri 1400-2300Z†. Employee lives on premises. Rwy 15-33 nmsr cracks and pavement spalling.

**AIRPORT MANAGER:** 325-625-5495

**WEATHER DATA SOURCES:** AWOS-3PT 119.1 (325) 625-3563.

**COMMUNICATIONS:** CTAF/UNICOM 122.8

® **FORT WORTH CENTER APP/DEP CON** 127.45

**CLEARANCE DELIVERY PHONE:** For CD ctc Fort Worth ARTCC at 817-858-7584.

**RADIO AIDS TO NAVIGATION:** NOTAM FILE ABI.

**ABILENE (VH) (H) VORTACW** 113.7 ABI Chan 84 N32°28.88' W99°51.81' 138° 44.9 NM to fld. 1809/10E.

VOR unusable:

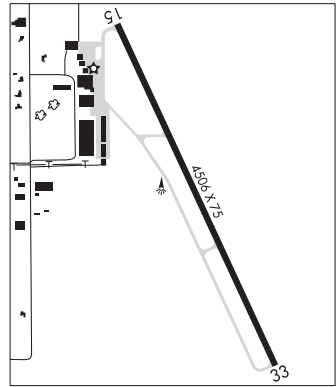
163°-236° byd 40 NM blo 18,000'

237°-247° byd 40 NM blo 7,000'

248°-250° byd 40 NM blo 18,000'

251°-255° byd 40 NM blo 4,500'

251°-255° byd 46 NM blo 18,000'



**COLLEGE STATION**

**EASTERWOOD FLD** (CLL)(KCLL) 3 SW UTC-6(-5DT) N30°35.28' W96°21.75'  
 321 B Class I, ARFF Index B NOTAM FILE CLL

**HOUSTON**  
 H-7C, L-19D, 21A  
 IAP, AD

**RWY 17-35:** H7000X146 (ASPH-CONC-GRVD) S-78, D-94, 2D-156

PCN 29 R/D/X/T HIRL

**RWY 17:** VASI(V4R)—GA 3.0° TCH 51'. Tree.

**RWY 35:** MALSR.

**RWY 11-29:** H5158X150 (ASPH-GRVD) S-37, D-49 PCN 14 F/D/X/T  
 MIRL

**RWY 11:** VASI(V4L)—GA 3.0° TCH 50'. Tree.

**RWY 29:** REIL. VASI(V4L)—GA 3.0° TCH 54'. Tree.

**RUNWAY DECLARED DISTANCE INFORMATION**

**RWY 11:** TORA-5158 TODA-5158 ASDA-5158 LDA-5158

**RWY 17:** TORA-7000 TODA-7000 ASDA-7000 LDA-7000

**RWY 29:** TORA-5158 TODA-5158 ASDA-5158 LDA-5158

**RWY 35:** TORA-7000 TODA-7000 ASDA-6932 LDA-6932

**SERVICE:** S4 **FUEL** 100LL, JET A, A+ **LGT** When twr clsd **ACTIVATE**  
 MALSR Rwy 35; MIRL Rwy 11-29; HIRL Rwy 17-35—CTAF. REIL Rwy 29 preset low ints only.

**AIRPORT REMARKS:** Attended 1200-0400Z†. 100LL svc 1200-0400Z†.

For fuel aft hrs PPR call 979-775-5255. Late night fee. CLOSED to unscheduled air carrier ops with more than 30 passenger seats except 24 hours PPR call arpt manager 979-775-9920. Turn fee skedd FAR 135 and all FAR 121 opns. Rwy 17-35 first 1850' Rwy 35 conc. PAEW adjacent all rwys and twys 1200-2200Z†. Surface conditions not reported from 2300-1100Z† (1700-0500 local) Mon-Fri & Sat-Sun. All rapid rfl mil Hel adz ATC for rapid rfl ops & procd to south ramp. Ctc UNICOM 122.95 for svc prior to Indg. Rapid rfl is avbl 1200-0400Z† dly. Spl rqs csdrd on case by case basis.

**AIRPORT MANAGER:** 979-775-9901

**WEATHER DATA SOURCES:** ASOS (979) 846-1708

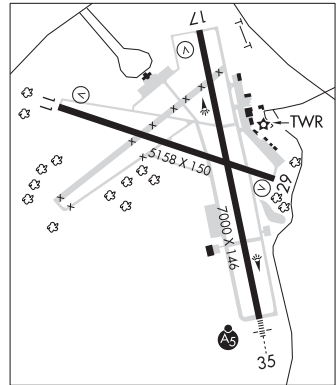
**COMMUNICATIONS:** CTAF 118.5 ATIS 126.85 UNICOM 122.95

**COLLEGE STATION RCO** 122.2 (MONTGOMERY COUNTY RADIO).

® **HOUSTON APP/DEP CON** 134.3

**TOWER** 118.5 (1400-0300Z†) **GND CON/CLNC DEL** 128.7 **CLNC DEL** 120.4 (when twr clsd)

**CLEARANCE DELIVERY PHONE:** For CD if una to ctc on FSS freq, ctc Houston ARTCC at 281-230-5622.



CONTINUED ON NEXT PAGE

## CONTINUED FROM PRECEDING PAGE

**AIRSPACE:** CLASS D svc 1400-0300Z±; other times CLASS E.

**RADIO AIDS TO NAVIGATION:** NOTAM FILE CLL.

**COLLEGE STATION (L) (L) VORTACW** 113.3 CLL Chan 80 N30°36.30' W96°25.24' 101° 3.2 NM to fld. 264/8E.

TACAN unusable:

101°-130° byd 25 NM blo 2,500'

131°-148° byd 30 NM blo 2,500'

149°-160° byd 30 NM blo 2,000'

325°-349° byd 30 NM blo 2,500'

350°-100° byd 25 NM blo 3,500'

VOR unusable:

024°-034° blo 4,000'

024°-034° byd 20 NM

131°-142° blo 7,000'

142°-152° byd 30 NM

152°-189° blo 7,000'

**ROWDY NDB (LOM)** 260 CL N30°29.62' W96°20.26' 344° 5.8 NM to fld. LOM unmonitored.

**ILS/DME** 110.55 I-CLL Chan 42(Y) Rwy 35. Class IE. LOM ROWDY NDB. Unmonitored when ATCT clsd. DME unmonitored. Glideslope unusable for coupled apchs blo 1,050' MSL. LOM unmonitored.

**COMM/NAV/WEATHER REMARKS:** All acct prkg on SE ramp must ctc for svc or trnsp, UNICOM 122.95 or 979-775-5255.

## COLLINSVILLE

**SUDDEN STOP** (T32) 1 NE UTC-6(-5DT) N33°34.29' W96°54.43'

DALLAS-FT WORTH

720 NOTAM FILE FTW

**RWY 17-35:** 1550X60 (TURF)

**RWY 17:** Trees.

**RWY 35:** Road.

**AIRPORT REMARKS:** Attended continuously. Student training prohibited. Rwy soft when wet. Call to confirm cond. Rwy 17-35 thlds unmarked.

**AIRPORT MANAGER:** 903-429-6343

**COMMUNICATIONS:** CTAF 122.9

**CLEARANCE DELIVERY PHONE:** For CD ctc Fort Worth ARTCC at 817-858-7584.

**COLORADO CITY** (T88) 6 NW UTC-6(-5DT) N32°28.11' W100°55.27'

DALLAS-FT WORTH

2214 B NOTAM FILE FTW

H-6G, L-17A

**RWY 17-35:** H5479X60 (ASPH) S-50 LIRL

**AIRPORT REMARKS:** Attended irregularly. Rwy 17-35 pavement from Rwy 35 thld lgts southward used as a twy and not maintained. Rwy 17-35 markings faded and peeling, no centerline.

**AIRPORT MANAGER:** 325-728-3464

**COMMUNICATIONS:** CTAF 122.9

**CLEARANCE DELIVERY PHONE:** For CD ctc Fort Worth ARTCC at 817-858-7584.

**RADIO AIDS TO NAVIGATION:** NOTAM FILE BPG.

**BIG SPRING (VL) (H) VORTACW** 117.2 BGS Chan 119 N32°23.14' W101°29.02' 069° 29.0 NM to fld. 2670/11E.

