

**GREENVILLE**

**MAJORS** (GVT)(KGVT) P (AF) 4 SE UTC-6(-5DT) N33°04.07' W96°03.92'

**DALLAS-FT WORTH**

535 B NOTAM FILE GVT

H-6H, L-17D

**RWY 17-35:** H8030X150 (ASPH) S-26 MIRL

IAP, DIAP, AD

**RWY 17:** MALS. PAPI(P4L)—GA 3.0° TCH 74'. Trees. 0.4% up.

**RWY 35:** REIL. PAPI(P4L)—GA 3.0° TCH 66'. Trees. 0.3% up.

**SERVICE:** S2 **FUEL** 100LL, JET A **LGT** ACTVT MALS Rwy 17; REIL Rwy 35; MIRL Rwy 17-35—CTAF.

**MILITARY—JASU** 1(B-10) 1(B-10A) 1(MD-3) 1(MA-1) 1(MA-3) **FUEL** (NC-100LL, A)

**AIRPORT REMARKS:** Attended Sun-Thu 1330-2300Z, Fri-Sat 1330-0000Z. When ATCT clsd and there is an emerg or incident on arpt, ctc 903-457-5333. 100LL self svc avbl 24 hours. Parachute Jumping. PPR for PAJA onto Majors Field. Twy A clsd. 89 ft high intst radio freq ant 3700 ft east of Rwy 35 at end of abndd pavement. Twy E lgt located 47 ft from pavement edge. Acft not vsb fm opposite end of rwy. Nmrs mil acft on fld for modification.

**AIRPORT MANAGER:** 903-457-3168

**WEATHER DATA SOURCES:** AWOS-3 133.425 (903) 455-7703.

**COMMUNICATIONS:** CTAF 118.65 UNICOM 122.95

® **FORT WORTH CENTER APP/DEP CON** 132.025 360.75

**TOWER** 118.65 385.425 (1330-2200Z, Mon-Fri, irregular other hrs)

**GND CON** 121.7 335.8 **AFMCLO FLT** 349.6

**CLEARANCE DELIVERY PHONE:** When ATCT clsd, for CD ctc Fort Worth ARTCC at 817-858-7584.

**AIRSPACE:** CLASS D svc 1330-2200Z, Mon-Fri; other times CLASS G.

**RADIO AIDS TO NAVIGATION:** NOTAM FILE FTW.

**BONHAM (VH) (H) VORTACW** 114.6 **BYP** Chan 93 N33°32.25' W96°14.05' 157° 29.4 NM to fld. 700/6E.

**ARVILLA (T) TACAN** Chan 33 **MJF** (109.6) N33°03.98' W96°03.68' at fld. 543/5E. NOTAM FILE GVT.

DME unusable:

024°-034° byd 16 NM blo 3,000'

080°-095° byd 5 NM

TACAN AZIMUTH unusable:

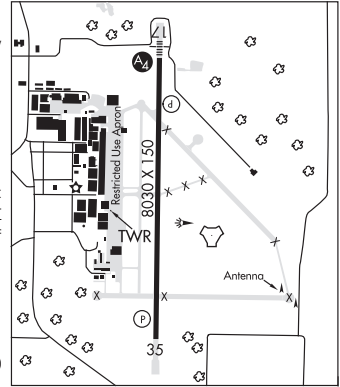
024°-034° byd 16 NM blo 3,000'

080°-095° byd 5 NM

212°-222° byd 12 NM blo 3,500'

**SULPHUR SPRINGS (L) DME** 109.0 **SLR** Chan 27 N33°11.92' W95°32.57' 254° 27.5 NM to fld. 508. NOTAM FILE SLR.

**ILS/DME** 110.5 **I-GVT** Chan 42 Rwy 17. Class IT. Glideslope unusable for cpd apch blw 900 MSL.



**GREGORY M SIMMONS MEML** (See CISCO on page 274)

**GROESBECK** N31°34.89' W96°32.95' NOTAM FILE FTW.

**HOUSTON**

(L) **DME** 108.8 **GNL** Chan 25 026° 4.0 NM to Mexia-Limestone Co. 514.

L-19D, A

DME unusable:

150°-205° byd 30 NM blo 2,500'

230°-310° byd 30 NM blo 2,400'

345°-035° byd 35 NM blo 2,500'