

## FAYETTEVILLE

**DRAKE FLD** (FVY)(KFVY) 3 S UTC-6(-5DT) N36°00.31' W94°10.20'

1252 B TPA—2101(849) Class IV, ARFF Index A NOTAM FILE FVY

**RWY 16-34:** H6005X100 (ASPH-GRVD) S-90, D-150, 2S-175,  
2D-175 MIRL

**RWY 16:** ODALS. PAPI(P4L)—GA 3.0° TCH 50'.

**RWY 34:** ODALS. PAPI(P4L)—GA 3.5° TCH 58'. Tree.

**RUNWAY DECLARED DISTANCE INFORMATION**

**RWY 16:** TORA-6005 TODA-6005 ASDA-6005 LDA-6005

**RWY 34:** TORA-6005 TODA-6005 ASDA-6005 LDA-6005

**SERVICE:** S2 FUEL 100LL, JET A LGT When ATCT clsd MIRL Rwy  
16-34 preset med instst. Actvt ODALS Rwy 16 and 34; PAPI Rwy  
34—CTAF.

**AIRPORT REMARKS:** Attended Mon-Fri 1200-0400Z‡, Sat-Sun  
1400-0200Z‡. Deer on and infov arpt. For fuel after hrs call  
479-443-4343, fee charged. Self service avbl 24hrs. 24 hr PPR for  
air carrier ops with more than 30 passenger seats call arpt manager  
479-718-7642 and fax FBO 479-718-7646.

**AIRPORT MANAGER:** (479) 718-7644

**WEATHER DATA SOURCES:** ASOS 119.575 (479) 442-5237.

**COMMUNICATIONS:** CTAF 128.0 ATIS 119.575 UNICOM 122.95

FAYETTEVILLE RCO 122.3 (JONESBORO RADIO)

Ⓡ RAZORBACK APP/DEP CON 121.0 (1130-0500Z‡)

Ⓡ MEMPHIS CENTER APP/DEP CON 126.1 (0500-1130Z‡)

TOWER 128.0 (1200-0400Z‡) GND CON 121.8

**CLEARANCE DELIVERY PHONE:** For CD ctc Memphis ARTCC at 901-368-8453/8449.

**AIRSPACE:** CLASS D svc 1200-0400Z‡; other times CLASS E.

**RADIO AIDS TO NAVIGATION:** NOTAM FILE JBR.

**RAZORBACK (VH) (H) VORTACW** 116.4 RZC Chan 111 N36°14.79' W94°07.28' 185° 14.7 NM to fld. 1332/4E.

VOR unusable:

025°-035° byd 40 NM

025°-150° byd 22 NM blo 4,000'

070°-080° byd 40 NM

093°-103° byd 124 NM

093°-103° byd 40 NM blo 17,000'

104°-144° byd 40 NM

145°-155° byd 40 NM blo 6,500'

145°-155° byd 67 NM blo 9,500'

145°-155° byd 80 NM

150°-210° byd 22 NM blo 3,500'

156°-170° byd 40 NM

195°-215° byd 40 NM

210°-220° byd 22 NM blo 3,000'

234°-245° byd 40 NM

310°-025° byd 22 NM blo 3,000'

TACAN AZIMUTH unusable:

148°-160°

225°-240°

**LOC/DME** 111.9 I-FVY Chan 56 Rwy 16. LOC/DME unmonitored when ATCT clsd. LOC unusable wi 0.0 NM abv  
2,500' 1.2 DME; unusable wi 2.5 NM abv 3,200' 3.7 DME.

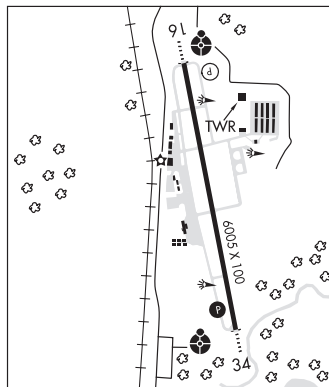
**LDA/DME** 111.9 I-LFH Chan 56 Rwy 34. LOC unusable byd 10 NM blw 3,500'; byd 10° right of course. DME  
unusable byd 10° right of course; byd 8 NM byd 3,000'; byd 10 NM blo 3,500' byd 15 NM.

**ASR** (1200-0400Z‡)

KANSAS CITY

H-6I, L-16F

IAP, AD



**FAYETTEVILLE** N36°00.50' W94°10.83'

RCO 122.3 (JONESBORO RADIO)

KANSAS CITY

L-16F