

**ABBEVILLE CHRIS CRUSTA MEML** (IYA)(KIYA) 3 E UTC-6(-5DT) N29°58.55' W92°05.05'

**HOUSTON**  
H-7D, L-21B, 22E, GOMC  
IAP

16 B TPA—See Remarks NOTAM FILE DRI

**RWY 16-34:** H5000X75 (ASPH) S-17 MIRL

**RWY 16:** REIL. PAPI(P2L)—GA 3.0° TCH 50'. Fence.

**RWY 34:** REIL. PAPI(P2L)—GA 3.0° TCH 50'. Trees.

**SERVICE:** S4 **FUEL** 100LL, JET A **LGT** MIRL Rwy 16-34; REIL Rwy 16 and 34 preset on low instst dusk to dawn; to incr instst acvt—CTAF.

**AIRPORT REMARKS:** Attended daylight hours. TPA—352 (336) ultralight within 3 miles of arpt.

**AIRPORT MANAGER:** (337) 898-4206

**WEATHER DATA SOURCES:** AWOS-3PT 118.875 (337) 892-0526.

**COMMUNICATIONS:** CTAF/UNICOM 122.8

Ⓡ **LAFAYETTE APP/DEP CON** 121.1 (1130-0430Z±)

**HOUSTON CENTER APP/DEP CON** 126.35 (0430-1130Z±)

**GCO** 135.075 (LAFAYETTE APCH and DE RIDDER FSS)

**CLEARANCE DELIVERY PHONE:** For CD ctc Lafayette Apch at 337-262-2729, when Apch clsd ctc Houston ARTCC at 281-230-5622.

**RADIO AIDS TO NAVIGATION:** NOTAM FILE LFT.

**LAFAYETTE (L) (L) VORTAC** 109.8 LFT Chan 35 N30°11.63'

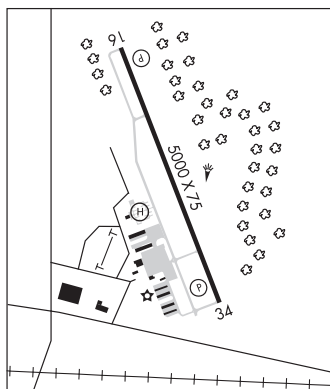
W91°59.55' 197° 13.9 NM to fld. 36/3E.

**TACAN AZIMUTH** unusable:

295°-320° blo 4,000'

**NDB (MHW)** 230 **BNZ** N30°03.67' W92°07.40' 156° 5.5 NM to fld. 13/2E. NOTAM FILE DRI.

**LOC** 110.95 I-YA Rwy 16.



**ACADIANA RGNL** (See NEW IBERIA on page 115)

**ALEXANDRIA**

**ALEXANDRIA INTL** (AEX)(KAEX) P (ANG) 4 W UTC-6(-5DT) N31°19.64' W92°32.91'

**HOUSTON**  
H-6I, L-21B, 22E  
IAP, AD

88 B TPA—See Remarks Class I, ARFF Index D NOTAM FILE AEX

**RWY 14-32:** H9352X150 (CONC-GRVD) S-81, D-180, 2S-175, 2D-330, 2D/2D2-850 HIRL

**RWY 14:** MALS.R. TDZL. PAPI(P4L)—GA 3.0° TCH 71'. RVR-TR

**RWY 32:** REIL. PAPI(P4L)—GA 3.0° TCH 80'. RVR-TR

**RWY 18-36:** H7001X150 (ASPH-CONC-GRVD) S-75, D-130,

2S-165, 2D-191, 2D/2D2-502 HIRL

**RWY 18:** REIL. PAPI(P4L)—GA 3.0° TCH 79'.

**RWY 36:** REIL. PAPI(P4L)—GA 3.0° TCH 77'. Trees.

**RUNWAY DECLARED DISTANCE INFORMATION**

**RWY 14:** TORA-9352 TODA-9352 ASDA-9352 LDA-9352

**RWY 18:** TORA-7001 TODA-7001 ASDA-7001 LDA-7001

**RWY 32:** TORA-9352 TODA-9352 ASDA-9352 LDA-9352

**RWY 36:** TORA-7001 TODA-7001 ASDA-7001 LDA-7001

**SERVICE:** S4 **FUEL** 100, JET A, MOGAS **OX** 2, 4 **MILITARY—FUEL** A+ (C318-443-5566.) (NC-100LL, A)

**AIRPORT REMARKS:** Attended continuously. Extensive helicopter tfc during military exercises. Center 75' of first 3000' of Rwy 18 is concrete, remainder is asphalt. Light acft frequently cross apch zones to Rwy 14-32 blo 2000' MSL. Extensive lgt acft tfc (cropdusters) below 900' to civ arpt 3.5 NM west southwest of field. TPA—right rectangular 1289 (1200), left overhead 1789 (1700). Commercial and lifeguard acft only on Commercial Terminal Ramp, all other acft utilize Twy A to FBO.

**AIRPORT MANAGER:** 318-427-6419

**WEATHER DATA SOURCES:** ASOS 123.975 (318) 442-6583.

**COMMUNICATIONS:** CTAF 127.35

**RCO** 122.2 (DE RIDDER RADIO)

Ⓡ **POLK APP/DEP CON** 125.4

**TOWER** 127.35 **GND CON** 121.9 **CLNC DEL** 121.9



CONTINUED ON NEXT PAGE

## CONTINUED FROM PRECEDING PAGE

## AIRSPACE: CLASS D.

## RADIO AIDS TO NAVIGATION: NOTAM FILE AEX.

(H) (H) VORTACW 116.1 AEX Chan 108 N31°15.40' W92°30.06' 327° 4.9 NM to fld. 76/3E.

## VOR unusable:

035°-065° blo 2,000'

066°-094° byd 35 NM blo 3,000'

185°-200° byd 35 NM blo 3,000'

201°-214° byd 35 NM blo 2,000'

215°-260° blo 2,000'

261°-285° byd 35 NM blo 2,000'

357°-034° byd 35 NM blo 3,000'

ILS 110.1 I-ERJ Rwy 14. Class IT.

## ASR/PAR

COMM/NAV/WEATHER REMARKS: Multicom frequency 130.0 avbl.

ESLER RGNL (ESF)(KESF) P (ARNG) 10 NE UTC-6(-5DT) N31°23.69' W92°17.75'

112 B NOTAM FILE ESF

HOUSTON

H-6I, L-21B, 22E

IAP

RWY 09-27: H5998X150 (ASPH-GRVD) S-75, D-150, 2S-175,

2D-220 HIRL

RWY 09: REIL. PAPI(P4L)—GA 3.0° TCH 51'. Trees.

RWY 27: MALSR.

RWY 14-32: H5600X150 (ASPH-GRVD) S-75, D-150, 2S-175,

2D-220 MIRL 0.4% up NW

RWY 14: REIL. PAPI(P4L)—GA 3.0° TCH 36'. Trees.

RWY 32: REIL. VASI(V4L)—GA 3.0° TCH 56'. Fence.

SERVICE: FUEL 100LL, JET A LGT ACTVT MALSR Rwy 27; REIL Rwy 09, 14-32; MIRL Rwy 14-32; HIRL Rwy 09-27; twy lgts Twys A, B, C, D and E—CTAF. Rwy 09 REILS OTS. Rwy 14 REIL OTS. Rwy 14 PAPI OTS. MILITARY— FUEL A+ (avbl 1300-2300Z† Tue-Fri; OT, C318-443-5566.) (NC-100LL)

AIRPORT REMARKS: Attended Tue-Fri 1300-2330Z†. Fuel avbl Tue-Fri 1300-2300Z†; Sat-Mon on call in advance call 318-443-5566. 100LL self serve 24hrs. Birds on and invof arpt seasonally. PAEW adjacent rwys and twys. Rwy 14 and Rwy 32 rwy markings severely faded.

AIRPORT MANAGER: 985-750-0485

WEATHER DATA SOURCES: ASOS 119.425 (318) 484-9031.

COMMUNICATIONS: CTAF/UNICOM 122.8

® POLK APP/DEP CON 125.4

CLEARANCE DELIVERY PHONE: For CD ctc Polk Apch at 337-531-2352.

RADIO AIDS TO NAVIGATION: NOTAM FILE AEX.

ALEXANDRIA (H) (H) VORTACW 116.1 AEX Chan 108 N31°15.40' W92°30.06' 049° 13.4 NM to fld. 76/3E.

## VOR unusable:

035°-065° blo 2,000'

066°-094° byd 35 NM blo 3,000'

185°-200° byd 35 NM blo 3,000'

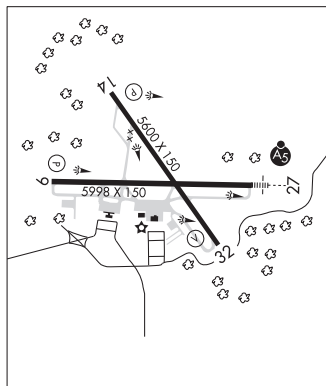
201°-214° byd 35 NM blo 2,000'

215°-260° blo 2,000'

261°-285° byd 35 NM blo 2,000'

357°-034° byd 35 NM blo 3,000'

ILS/DME 111.5 I-ESF Chan 52 Rwy 27. Class IA. ILS/DME unmonitored. DME unusable byd 25° right of course.



ALLEN PARISH (See OAKDALE on page 120)

ALVIN CALLENDER FLD (See NEW ORLEANS NAS JRB (ALVIN CALLENDER FLD) on page 118)

ANGER N30°36.38' W90°25.27' NOTAM FILE DRI.

NEW ORLEANS

NDB (LOMW) 212 HP 178° 5.1 NM to Hammond Northshore Rgnl. 94/OE.