

ST PETERSBURG—CLEARWATER

ST PETE—CLEARWATER INTL (PIE)(KPIE) P (CG) 8 N UTC-5(-4DT) N27°54.52' W82°41.19'

MIAMI

H-8H, L-21D, 24F
IAF, AD

11 B LRA Class I, ARFF Index C NOTAM FILE PIE

RWY 18-36: H9730X150 (ASPH-GRVD) S-75, D-195, 2S-175,

2D-320, 2D/2D2-700 PCN 74 F/A/W/T HIRL CL

RWY 18: MALSR. TDZL. PAPI(P4L)—GA 3.0° TCH 68'. RVR-TMR
Brush.RWY 36: PAPI(P4L)—GA 3.0° TCH 76'. RVR-TMR Thld dsplcd 930'.
Tree.

RWY 04-22: H6000X150 (ASPH-GRVD) S-80, D-130, 2S-165,

2D-235 PCN 32 F/B/X/T MIRL

RWY 04: REIL. PAPI(P4L)—GA 3.0° TCH 57'. Trees.

RWY 22: REIL. PAPI(P4L)—GA 3.0° TCH 45'. Road.

LAND AND HOLD—SHORT OPERATIONS

LDG RWY	HOLD—SHORT POINT	AVBL LDG DIST
RWY 18	04-22	7557
RWY 22	18-36	4514

RUNWAY DECLARED DISTANCE INFORMATION

RWY 04: TORA-6000 TODA-6000 ASDA-6000 LDA-6000

RWY 18: TORA-9730 TODA-9730 ASDA-9180 LDA-9180

RWY 22: TORA-6000 TODA-6000 ASDA-6000 LDA-6000

RWY 36: TORA-9730 TODA-9730 ASDA-9650 LDA-8720

SERVICE: S4 FUEL 100, JET A, A1+ OX 1, 2 LGT When ATCT clsd

ACTVT MALSR Rwy 18; TDZ Rwy 18; cntn Rwy 18-36; MIRL Rwy 04-22; HIRL Rwy 18-36; twy lgts—CTAF.

MILITARY—JASU 1(NC-5) FUEL A, A+ (C727-531-1441, avbl 1000-0300Z†, OT 15 min PN rqr.) J8-Avbl for SAR acft only. (Mil) (NC-100, A A+) OIL O-128.

NOISE: Noise sensitive area 5 mi N extdg 1 mi E & W of LOC SB to shoreline. Tbjt Indg Rwy 18 & dep Rwy 36 use publ noise abatement proc.

AIRPORT REMARKS: Attended continuously. Birds on and invof arpt. Lgts on hwy N of arpt may be mistaken for rwy lgts. Banner towing NA. PPR rqr for all trans acft requesting to prk on Clearwater USAR mil ramp/apron. Must ctc Clearwater Army Support Fac Ops at (910)-771-3046 or ASF MacDill at (813)-828-3183/3180 up to 7 days bfr arr. Min notice is 24 hours bfr arr. 1000-0300Z† Mon-Thu or 1000-1830Z† Fri excluding holidays and weekends. Flight Notification Service (ADCUS) avbl.

AIRPORT MANAGER: 727-453-7800

WEATHER DATA SOURCES: ASOS 134.5 (727) 531-3456.

COMMUNICATIONS: CTAF 118.3 ATIS 134.5 UNICOM 122.95

ST PETERSBURG RCO 122.2 (SAINT PETERSBURG RADIO)

TAMPA APP/DEP CON 125.3

TOWER 118.3 128.4 (1100-0400Z†) GND CON 121.9 CLNC DEL 120.6

CLEARANCE DELIVERY PHONE: For Cd if una to ctc on FSS freq, ctc Tampa Apch at 813-878-2528.

AIRSPACE: CLASS D svc 1100-0400Z†; other times CLASS E.

RADIO AIDS TO NAVIGATION: NOTAM FILE PIE.

ST PETERSBURG (H) (H) VORTACW 116.4 PIE Chan 111 N27°54.47' W82°41.06' at fld. 5/5W.

VOR unusable:

025°-054° byd 21 NM blo 5,000'

233°-250° byd 20 NM

TACAN AZIMUTH unusable:

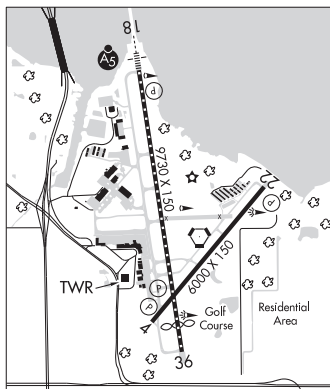
133°-146°

CAPOK NDB (LOMW) 360 PI N27°59.71' W82°42.23' 175° 5.3 NM to fld. 23/5W.

ILS/DME 109.1 I-PIE Chan 28 Rwy 18. Class OF IID. LOM CAPOK NDB. Unmonitored when ATCT clsd.

ILS/DME 108.7 I-CWT Chan 24 Rwy 36. Class IA. Unmonitored when ATCT clsd. LOC unusable byd 25° left of course.

COMM/NAV/WEATHER REMARKS: Emerg freq 121.5 not avbl at twr.



ST PETERSBURG N27°54.47' W82°41.06' NOTAM FILE PIE.

MIAMI

(H) (H) VORTACW 116.4 PIE Chan 111 at St Pete—Clearwater Intl. 5/5W.

H-8H, L-21D, 24F

VOR unusable:

025°-054° byd 21 NM blo 5,000'

233°-250° byd 20 NM

TACAN AZIMUTH unusable:

133°-146°

RCO 122.2 (SAINT PETERSBURG RADIO)

SANTA ROSA N30°36.91' W86°56.24' NOTAM FILE GNV.

NEW ORLEANS

(L) TACAN 133.6 NGS Chan 63 323° 6.4 NM to Whiting Fld Nas South. 147/2W.

L-21C, 22H