

**COLUMBUS** (CSG)(KCSG) 3 NE UTC-5(-4DT) N32°30.98' W84°56.33'ATLANTA  
H-9A, 12F, L-181  
IAP, AD

398 B ARFF Index—See Remarks NOTAM FILE CSG

**RWY 06-24:** H6997X150 (ASPH-GRVD) D-160, 2D-250

PCN 91 F/B/W/T HIRL

**RWY 06:** MALSR. PAPI(P4L)—GA 2.61° TCH 48'. RVR-T Trees.**RWY 24:** REIL. PAPI(P4L)—GA 3.0° TCH 43'. Bldg.**RWY 13-31:** H3997X75 (ASPH-PFC) S-12 PCN 12 F/B/W/T MIRL  
0.7% up NW**RWY 13:** REIL. PAPI(P4L)—GA 3.0° TCH 36'. Tree.**RWY 31:** REIL. PAPI(P4L)—GA 3.0° TCH 42'. Thld dspcd 150'. Pole.**RUNWAY DECLARED DISTANCE INFORMATION****RWY 06:** TORA-6997 TODA-6997 ASDA-6997 LDA-6997**RWY 24:** TORA-6997 TODA-6997 ASDA-6997 LDA-6997**SERVICE:** S4 FUEL 100LL, JET A LGT All lgts oper 1400-0200Z‡.

After 0200Z‡, ACTVT MALSR Rwy 06; REIL Rwy 24; PAPI Rwy 06 and 24; HIRL Rwy 06-24; MIRL Rwy 13-31; twy lgts; windcone lgts—CTAF. REIL Rwy 13 and Rwy 31; PAPI Rwy 13 and 31 oper consly.

**AIRPORT REMARKS:** Attended continuously. Rwy 13-31 clsd to acr. Rwy 13-31 not avbl for sked acr opns with more than psgr seats or unsked acr at least 31 psgr seats. Fuel: self serve 100LL avbl 24 hrs. Birds on and invof arpt. Class I, ARFF Index A. Index B aircraft rescue and firefighting equipment avbl. Be alert for Rwy 06 at Twy D int dep instructions with rwy rmng 5085 ft TORA/TODA/ASDA. Be alert for Rwy 06 at Twy F int dep instructions with rwy rmng 5623 ft TORA/TODA/ASDA.**AIRPORT MANAGER:** 706-324-2449**WEATHER DATA SOURCES:** ASOS (706) 576-4715 LLWAS.**COMMUNICATIONS:** CTAF 120.1 ATIS 127.75 UNICOM 122.95

RCO 122.65 (MACON RADIO)

® ATLANTA APP/DEP CON 125.5 (1115-0300Z‡) 126.55 (7000' and abv)

ATLANTA CENTER APP/DEP CON 120.45 (0300-1115Z‡)

TOWER 120.1 (1400-0200Z‡) GND CON 121.9

**CLEARANCE DELIVERY PHONE:** For CD if una to ctc on FSS freq, ctc Atlanta Apch at 678-364-6132, when ATCT clsd ctc Atlanta ARTCC at 770-210-7692.**AIRSPACE:** CLASS D svc 1400-0200Z‡; other times CLASS E.**RADIO AIDS TO NAVIGATION:** NOTAM FILE CSG.

(L) TACAN Chan 118 CSG (117.1) N32°36.92' W85°01.06' 145° 7.1 NM to fld. 635/1E.

TACAN AZIMUTH unusable:

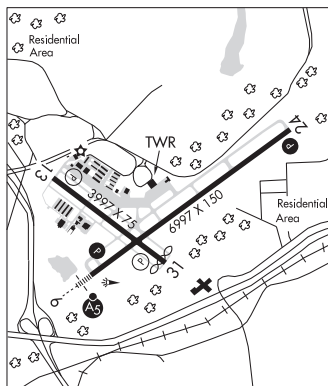
015°-030°

TACAN DME unusable:

015°-030°

**FENIX NDB (LOMW)** 355 CS N32°27.12' W85°02.52' 056° 6.5 NM to fld. 355/2W.

ILS 110.3 I-CSG Rwy 06. Class IB. LOM FENIX NDB. Autopilot cpd apch NA blw 900' MSL.

**CONEY** N31°59.87' W83°51.71' NOTAM FILE MCN.JACKSONVILLE  
L-181**NDB (MHW)** 400 OHY 103° 4.5 NM to Crisp Co-Cordele. 313/6W. NDB unmonitored 2200-1200Z‡.**COOK CO** (See ADEL on page 190)