

BOWLING GREEN—WARREN CO RGNL (BWG)(KBWG) 2 SE UTC-6(-5DT) N36°57.87' W86°25.18'

ST LOUIS
H-5E, 9A, L-16J
IAP

547 B ARFF Index—See Remarks NOTAM FILE BWG
RWY 03-21: H6501X150 (ASPH) S-120, D-221, 2D-358
 PCN 63 F/C/X/T HIRL 0.4% up SW
RWY 03: REIL. PAPI(P4L)—GA 3.0° TCH 44'.
RWY 21: REIL. PAPI(P4L)—GA 3.0° TCH 30'.
RWY 12-30: H3956X150 (ASPH) S-25.5, D-40 PCN 9 F/C/X/T MIRL
RWY 30: Thld dspcd 349'.
RUNWAY DECLARED DISTANCE INFORMATION
RWY 03: TORA-6500 TODA-6500 ASDA-6500 LDA-6500
RWY 21: TORA-6500 TODA-6500 ASDA-6500 LDA-6500
SERVICE: S4 FUEL 100LL, JET A LGT ACTVT REIL Rwy 03 and 21;
 HIRL Rwy 03-21—CTAF.

AIRPORT REMARKS: Attended continuously. Birds on and in/ov arpt. Class IV, ARFF Index A. Ops with more than 30 pax seats 24 hr PPR—Amgr. Rwy 12-30 not avbl for sked acr ops more than 9 pax seats or unsked acr at least 31 pax seats. Rwy 12-30 longl and transverse cracking, uneven sfc.

AIRPORT MANAGER: 270-842-1101
WEATHER DATA SOURCES: ASOS 127.825 (270) 843-8136.
COMMUNICATIONS: CTAF/UNICOM 123.0
 RCO 122.2 (LOUISVILLE RADIO)

Ⓜ **MEMPHIS CENTER APP/DEP CON** 133.85

CLEARANCE DELIVERY PHONE: For CD ctc Memphis ARTCC at 901-368-8453/8449.
AIRSPACE: CLASS E.

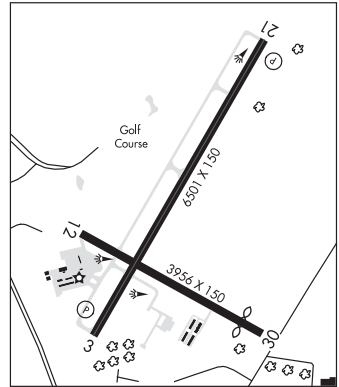
RADIO AIDS TO NAVIGATION: NOTAM FILE BWG.

NOORA NDB (LOMW) 236 BW N36°52.80' W86°28.90' 034° 5.9 NM to fld. 613/4W.
(DH) DME 117.9 BWG Chan 126 N36°55.72' W86°26.61' 028° 2.4 NM to fld. 568.

DME unusable:
 001°-040° byd 10 NM blo 18,000'
 041°-100° byd 10 NM blo 5,000'
 101°-180° byd 10 NM blo 11,000'
 181°-220° byd 10 NM
 221°-240° byd 10 NM blo 10,000'
 241°-255° byd 10 NM
 256°-360° byd 10 NM blo 11,000'

ILS 108.75 I-BWG Rwy 03. Class IB. LOM NOORA NDB. Glideslope unusable within 0.6 NM blw 762'; unusable byd 6° left of course and byd 6° right of course.

COMM/NAV/WEATHER REMARKS: CNL IFR — Louisville FSS 122.2.



BOWLING GREEN N36°55.72' W86°26.61' NOTAM FILE BWG.

(DH) DME 117.9 BWG Chan 126 028° 2.4 NM to Bowling Green—Warren Co Rgnl. 568.

ST LOUIS
H-5E, 6J, 9A, L-16J

DME unusable:
 001°-040° byd 10 NM blo 18,000'
 041°-100° byd 10 NM blo 5,000'
 101°-180° byd 10 NM blo 11,000'
 181°-220° byd 10 NM
 221°-240° byd 10 NM blo 10,000'
 241°-255° byd 10 NM
 256°-360° byd 10 NM blo 11,000'

RCO 122.2 (LOUISVILLE RADIO)

BOWMAN FLD (See LOUISVILLE on page 278)

BRECKINRIDGE CO (See HARDINSBURG on page 270)