

ANDREWS

WESTERN CAROLINA RGNL (RHP)(KRHP) 2 W UTC-5(-4DT) N35°11.71' W83°51.78'

ATLANTA
H-9B, 12G, L-25B
IAP

1699 B NOTAM FILE RHP

RWY 08-26: H5500X100 (ASPH) S-25, D-45 MIRL 0.3% up NE

RWY 08: REIL. PAPI(P2L)—GA 3.5° TCH 24'. Thld dsplcd 215'.

Railroad. Rgt tfc.

RWY 26: PAPI(P2L)—GA 4.0° TCH 44'. Trees.

SERVICE: S4 FUEL 100LL, JET A, A1+ LGT ACTIVATE REIL Rwy 08—CTAF. PAPI Rwy 08 and Rwy 26 oper cont. MIRL Rwy 08-26 on dusk-dawn. To incr inst—CTAF. Bcn lctd 0.5 mi north of west end of Rwy 08-26. Rwy 26 PAPI unusbl byd 2° right of cntrln. Rwy 08 PAPI unusbl byd 2° left and 8° right of cntrln (due to trrn). Twy unlgtd.

AIRPORT REMARKS: Attended Mon-Sat 1400-2200Z‡, Sun 1700-2200Z‡.

Unattended Thanksgiving, Christmas and New Year's Day. Livestock pastured invof arpt. Low flying mil jet acft overfly arpt. 100LL avbl 24 hr with credit card. Arpt smdnd by high trrn. Rwy 08, 8' drop-off, 108' from thld both sides in rwy safety area. 4'-5' ditch 75' from rwy cntrln on both sides. Rwy 08 RR 390' right of cntrln on both sides.

Cold temperature airport. Altitude correction required at or below -8C.

AIRPORT MANAGER: 828-321-5114

WEATHER DATA SOURCES: AWOS-3 119.675 (828) 321-1049.

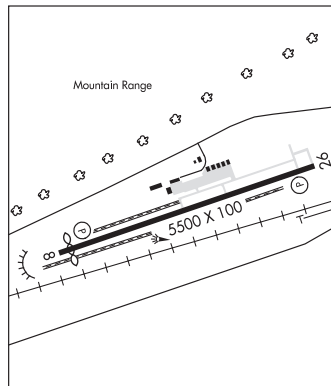
COMMUNICATIONS: CTAF/UNICOM 122.8

Ⓡ ATLANTA CENTER APP/DEP CON 134.8

CLEARANCE DELIVERY PHONE: For CD ctc Atlanta ARTCC at 770-210-7692.

RADIO AIDS TO NAVIGATION: NOTAM FILE MCN.

HARRIS (L) TACAN Chan 35 HRS (109.8) N34°56.58' W83°54.94' 010° 15.3 NM to fld. 3658/0E.



ANSON CO/JEFF CLOUD FLD (See WADESBORO on page 356)

ASHE CO (See JEFFERSON on page 319)

ASHEBORO RGNL (HBI)(KHBI) 6 SW UTC-5(-4DT) N35°39.27' W79°53.68'

CHARLOTTE
H-9B, 12H, L-25E, 36F
IAP

671 B NOTAM FILE HBI

RWY 03-21: H5501X100 (ASPH) S-30, D-60 MIRL

RWY 03: REIL. PAPI(P2L)—GA 3.5° TCH 48'. Trees.

RWY 21: REIL. PAPI(P2L)—GA 3.0° TCH 40'. Trees.

SERVICE: S4 FUEL 100LL, JET A1+ LGT Dusk-0400Z‡. Actvt REIL Rwy 03 and 21; PAPI Rwy 03 and 21; and after 0400Z‡, MIRL Rwy 03-21—CTAF.

AIRPORT REMARKS: Attended Oct-May 1300Z‡-dusk, Jun-Sep 1300Z‡-0100Z‡. 100LL 24 hr self svc avbl with credit card. Rwy 03 has 40' dropoff 400' fm thr; 0B. Terrain rising south of the arpt.

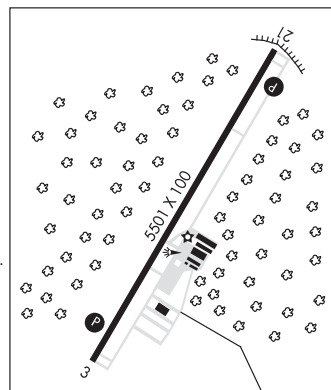
AIRPORT MANAGER: 336-625-6120

WEATHER DATA SOURCES: AWOS-3 119.275 (336) 626-7933.

COMMUNICATIONS: CTAF/UNICOM 122.8

Ⓡ GREENSBORO APP/DEP CON 126.6

CLEARANCE DELIVERY PHONE: For CD ctc Greensboro Apch at 743-222-6129.



CONTINUED ON NEXT PAGE

CONTINUED FROM PRECEDING PAGE

RADIO AIDS TO NAVIGATION: NOTAM FILE GSO.

GREENSBORO (VH) (H) VORTAC 116.2 GSO Chan 109 N36°02.74' W79°58.58' 173° 23.8 NM to fld. 908/3W.

TACAN AZIMUTH unusable:

255°-290° byd 10 NM blo 6,000'

VOR unusable:

010°-015° byd 40 NM

072°-076° byd 40 NM

083°-093° byd 40 NM blo 6,000'

083°-093° byd 93 NM

107°-111° byd 40 NM

118°-156° byd 40 NM

157°-167° byd 40 NM blo 3,600'

157°-167° byd 48 NM

168°-180° byd 40 NM

196°-199° byd 40 NM

240°-250° byd 40 NM

260°-276° byd 40 NM

277°-288° byd 40 NM blo 3,500'

277°-288° byd 47 NM blo 6,000'

277°-288° byd 56 NM

289°-302° byd 40 NM blo 5,000'

289°-302° byd 55 NM

303°-317° byd 40 NM blo 5,200'

303°-317° byd 55 NM

318°-354° byd 40 NM

ASHEVILLE RGNL (AVL)(KAVL) 9 S UTC-5(-4DT) N35°26.17' W82°32.52'

2164 B Class I, ARFF Index B NOTAM FILE AVL

RWY 17-35: H8002X150 (ASPH-GRVD) S-120, D-219, 2D-404,

2D/2D2-837 PCN 54 F/B/X/U HIRL CL

RWY 17: MALSR. PAPI(P4R)—GA 3.0° TCH 55'. RVR-TR

0.4% down S.

RWY 35: MALSR. TDZL. PAPI(P4L)—GA 3.0° TCH 56'. RVR-TR Rgt

ffc. 0.8% up N.

RUNWAY DECLARED DISTANCE INFORMATION

RWY 17: TORA-8002 TODA-8002 ASDA-8002 LDA-8002

RWY 35: TORA-8002 TODA-8002 ASDA-8002 LDA-8002

SERVICE: S2 FUEL 100LL, JET A OX3 LGT When twr clsd, actv

MALSR Rwy 17 & 35; PAPI Rwys 17 & 35; HIRLS Rwy

17-35—CTAF.

AIRPORT REMARKS: Attended continuously. Flocks of migratory birds on and in/ov arpt. PPR for unscheduled air carrier ops with more than 30 px seats 0400-1200Z†, call arpt comm 828-684-4577. For the Asheville Rgnl Arpt acft diversions emerg contingency plan and fac constraints ctc arpt admin at 828-684-2226. Rwy 35 right traffic when ATCT clsd.

AIRPORT MANAGER: 828-684-4577

WEATHER DATA SOURCES: ASOS (828) 681-0131 ASOS wind unreliable when ATCT clsd. LLWAS.

COMMUNICATIONS: CTAF 121.1 ATIS 120.2 UNICOM 122.95

® APP/DEP CON 124.65 (80°-299°) 125.8 (300°-79°) (1130-0400Z‡)

ATLANTA CENTER APP/DEP CON 132.625 (0400-1130Z‡)

TOWER 121.1 (1130-0400Z‡) GND CON 121.9

CLEARANCE DELIVERY PHONE: When ATCT clsd, for CD ctc Atlanta ARTCC at 770-210-7692.

AIRSPACE: CLASS C svc ctc APP CON svc 1130-0400Z‡ other times CLASS G.

RADIO AIDS TO NAVIGATION: NOTAM FILE RDU.

SUGARLOAF MOUNTAIN (L) (L) VORTACW 112.2 SUG Chan 59 N35°24.39' W82°16.12' 280° 13.5 NM to fld. 3970/2W.

BROAD RIVER NDB (HW) 379 BRA N35°16.37' W82°28.26' 347° 10.4 NM to fld. 2149/7W. NOTAM FILE AVL.

NDB unmonitored when asheville ATCT closed.

KEANS NDB (LOMW) 357 IM N35°31.97' W82°35.25' 166° 6.2 NM to fld. 2125/7W. NOTAM FILE AVL.

ILS/DME 110.9 I-IMO Chan 46 Rwy 17. Class IA. LOM KEANS NDB. LOC unmonitored when ATCT closed. LOC unusable byd 25° right and left of course, rapidly rising terrain; unusable within 0.4 NM of thr. DME unusable byd 25° right and left of course, rapidly rising terrain.

ILS/DME 110.5 I-AVL Chan 42 Rwy 35. Class IB. Unmonitored when ATCT closed.

ASR (1130-0400Z‡)

COMM/NAV/WEATHER REMARKS: Comm unavbl blo 6,000 ft excp by RDU Radio on 122.3 (SUGARLOAF MOUNTAIN RCO) when AVL Apch Ctl clsd. Right traffic when twr clsd.

ATLANTA
H-9B, 12G, L-25C
IAP, AD

