

GREENSBORO EXEC (3A4) 8 SE UTC-5(-4DT) N35°56.52' W79°41.13'

CHARLOTTE
L-25E, 36F

739 NOTAM FILE RDU

RWY 17-35: H3063X30 (ASPH) S-8 MIRL 2.2% up S

RWY 17: Trees.

RWY 35: Trees.

SERVICE: S4 **LGT** Actvt MIRL Rwy 17-35, 5 clicks only—CTAF more than 5 lock out control for 10 min. Rwy 17-35 only two end lgts each side.

AIRPORT REMARKS: Attended 1200-2200Z. Parachute Jumping. Rwy 17 uphill ldg preferred. Rwy 17-35 turn-arounds are part of the rwy, there is no runup area at either end. Rwy 17-35 numbers smaller than std. Rwy 17 has 50' drop off 60' from rwy end offset 30' both sides of centerline. Numerous +50' trees in the apchs and along the sides of the rwy; numerous +15' trees in the prim sfc.

AIRPORT MANAGER: 336-420-8623

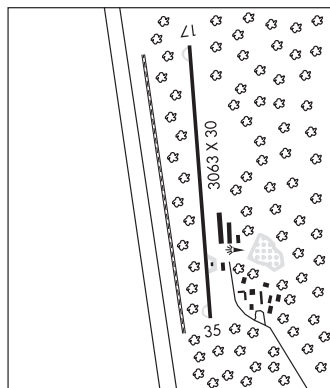
COMMUNICATIONS: CTAF/UNICOM 122.8

CLEARANCE DELIVERY PHONE: For CD ctc Greensboro Apch at 743-222-6129.

RADIO AIDS TO NAVIGATION: NOTAM FILE RDU.

LIBERTY (VL) (L) VORTAC 113.0 LIB Chan 77 N35°48.70'

W79°36.76' 339° 8.6 NM to fld. 828/3W.



PIEDMONT TRIAD INTL (GSO)(KGSO) 7 W UTC-5(-4DT) N36°06.08' W79°56.47'

CINCINNATI

926 B LRA Class I, ARFF Index C NOTAM FILE GSO MON Airport

H-9B, 12H, L-25E, 36F
IAP, AD

RWY 05R-23L: H10001X150 (ASPH-GRVD) S-120, D-250, 2S-175,

2D-550, 2D/2D2-1051 PCN 91 F/C/X/T HIRL CL

RWY 05R: MALSR. PAPI(P4R)—GA 3.0° TCH 70'. RVR-TMR

0.3% down.

RWY 23L: ALSF2. TDZL. PAPI(P4L)—GA 3.0° TCH 55'. RVR-TMR

RWY 05L-23R: H9000X150 (ASPH-GRVD) S-120, D-250, 2D-550,

2D/2D2-1120 PCN 137F/C/X/T HIRL CL

RWY 05L: ALSF2. TDZL. PAPI(P4L)—GA 3.0° TCH 69'. RVR-TMR

RWY 23R: MALSR. TDZL. PAPI(P4L)—GA 3.0° TCH 72'. RVR-TMR

RWY 14-32: H6380X150 (ASPH-GRVD) S-120, D-218, 2S-175,

2D-352 PCN 62 F/C/X/T HIRL 0.4% up NW

RWY 32: REIL. PAPI(P4L)—GA 3.0° TCH 53'.

RUNWAY DECLARED DISTANCE INFORMATION

RWY 05L:TORA-9000 TODA-9000 ASDA-9000 LDA-9000

RWY 05R:TORA-10001 TODA-10001 ASDA-10001 LDA-10001

RWY 14: TORA-6380 TODA-6380 ASDA-6380 LDA-6380

RWY 23L:TORA-10001 TODA-10001 ASDA-9601 LDA-9601

RWY 23R:TORA-9000 TODA-9000 ASDA-9000 LDA-9000

RWY 32: TORA-6380 TODA-6380 ASDA-6380 LDA-6380

SERVICE: S4 **FUEL** 100LL, JET A **OX** 1, 2

NOISE: Due to noise sensitive areas, acft performing practice approaches shall use Rwy 05R-23L.

AIRPORT REMARKS: Attended continuously. Acft with wingspan greater than 171' are prohibited from using Twy E. Twy E portions btn Twy J and Twy H not visible from ATCT. Twy K northeast of Twy K6 clsd exc cargo acft. Flight Notification Service (ADCUS) avbl.

AIRPORT MANAGER: 336-665-5600

WEATHER DATA SOURCES: ASOS 128.55 (336) 393-0168. WSP.

COMMUNICATIONS: D-ATIS 128.55 UNICOM 122.95

RCO 122.1R 116.2T (RALEIGH RADIO)

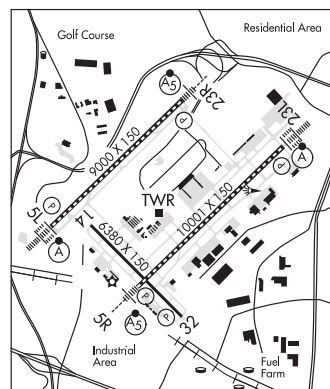
Ⓡ **GREENSBORO APP/DEP CON** 126.6 (050°-249°) 124.35 (250°-049°)

GREENSBORO TOWER 119.1 **GND CON** 121.9 **CLNC DEL** 121.75

PDC

CLEARANCE DELIVERY PHONE: For CD ctc Greensboro Apch at 743-222-6129.

AIRSPACE: CLASS C svc ctc APP CON.



CONTINUED ON NEXT PAGE

CONTINUED FROM PRECEDING PAGE

RADIO AIDS TO NAVIGATION: NOTAM FILE GSO.

GREENSBORO (VH) (H) VORTAC 116.2 GSO Chan 109 N36°02.74' W79°58.58' 030° 3.7 NM to fld. 908/3W.

TACAN AZIMUTH unusable:

255°-290° byd 10 NM blo 6,000'

VOR unusable:

010°-015° byd 40 NM

072°-076° byd 40 NM

083°-093° byd 40 NM blo 6,000'

083°-093° byd 93 NM

107°-111° byd 40 NM

118°-156° byd 40 NM

157°-167° byd 40 NM blo 3,600'

157°-167° byd 48 NM

168°-180° byd 40 NM

196°-199° byd 40 NM

240°-250° byd 40 NM

260°-276° byd 40 NM

277°-288° byd 40 NM blo 3,500'

277°-288° byd 47 NM blo 6,000'

277°-288° byd 56 NM

289°-302° byd 40 NM blo 5,000'

289°-302° byd 55 NM

303°-317° byd 40 NM blo 5,200'

303°-317° byd 55 NM

318°-354° byd 40 NM

ILS/DME 109.55 I-LLG Chan 32(Y) Rwy 05L. Class IIIE. ILS DME unusable byd 25° left of course.

ILS/DME 111.9 I-LZY Chan 56 Rwy 05R. Class IIE. DME unusable 34° rt of course.

ILS 109.3 I-HIH Rwy 23L. Class IIE.

ILS/DME 109.55 I-IDB Chan 32(Y) Rwy 23R. Class IE. LOC unusable byd 30° left and 30° right of course.

ILS/DME 111.15 I-GFN Chan 48(Y) Rwy 32. Class IT.

GREENVILLE

PIIT-GREENVILLE (PGV)(KPGV) 2 N UTC-5(-4DT) N35°38.14' W77°23.05'

26 B ARFF Index—See Remarks NOTAM FILE PGV

RWY 02-20: H7175X150 (ASPH-GRVD) S-87, D-140 PCN 30 F/B/X/T

HIRL

RWY 02: REIL. PAPI(P4L)—GA 3.1° TCH 41'. Thld dspcd 271'. Trees.

RWY 20: MALSR. PAPI(P4L)—GA 3.0° TCH 50'. Trees.

RWY 08-26: H4997X150 (ASPH) S-50, D-73 PCN 17 F/B/X/T MIRL

RWY 08: REIL. PAPI(P4L)—GA 4.0° TCH 53'. Trees.

RWY 26: REIL. PAPI(P4L)—GA 3.0° TCH 40'. Pole.

RUNWAY DECLARED DISTANCE INFORMATION

RWY 02: TORA-7175 TODA-7175 ASDA-7175 LDA-6905

RWY 08: TORA-4997 TODA-4997 ASDA-4997 LDA-4997

RWY 20: TORA-7175 TODA-7175 ASDA-6505 LDA-6505

RWY 26: TORA-4997 TODA-4997 ASDA-4997 LDA-4997

SERVICE: S4 FUEL 100LL, JET A LGT ACTIVATE MALSR Rwy 20; PAPI Rwy 02, Rwy 20, Rwy 08 and Rwy 26; HIRL Rwy 02-20; MIRL Rwy 08-26—CTAF. Lgtd windsock OTS indef.

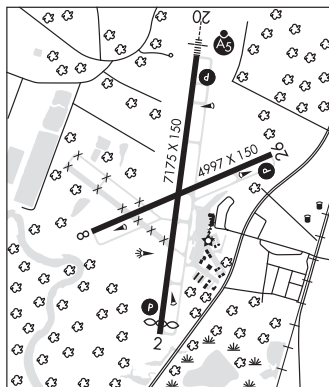
AIRPORT REMARKS: Attended 1100-0300Z†. Class I, ARFF Index B. Index C ARFF eqpt avbl upon req. Arpt clsd to unscheduled air carrier ops exc 8 hrs PPR 252-902-2025 daily 0700-1500Z†. Rwy 08-26 not available for air carrier use, uneven surface. Jet acct departing from Rwy 20 shall hold on air carrier or GA apron until take off clearance is received. 24 hr helicopter ops at hospital 1.5 NM SSW of arpt, monitoring CTAF.

AIRPORT MANAGER: 252-902-2026

CHARLOTTE

H-9C, 12H, L-35C

IAP, AD



CONTINUED ON NEXT PAGE