

## ROCKINGHAM CO NC SHILOH (See REIDSVILLE on page 344)

ROCKY MOUNT/WILSON RGNL (RWI)(KRWI) 7 SW UTC-5(-4DT) N35°51.38' W77°53.52'

CHARLOTTE

158 B ARFF Index—See Remarks NOTAM FILE RWI

H-9C, 12H, L-35B, 36G

RWY 04-22: H7099X150 (ASPH-GRVD) S-101, D-162

IAP

PCN 40 F/B/X/T HIRL

RWY 04: MALSR. PAPI(P4L)—GA 3.0° TCH 41'.

RWY 22: REIL. PAPI(P4L)—GA 3.0° TCH 42'. Trees.

## RUNWAY DECLARED DISTANCE INFORMATION

RWY 04: TORA-7100 TODA-7100 ASDA-7100 LDA-7100

RWY 22: TORA-7100 TODA-7100 ASDA-6900 LDA-6900

SERVICE: S4 FUEL 100LL, JET A 0X1 LGT Actvt MALSR Rwy 04; REIL Rwy 22; HIRL Rwy 04-22—CTAF.

AIRPORT REMARKS: Attended Mon-Fri 1100-0100Z, Sat-Sun 1300-2300Z. Class IV, ARFF Index A. Clsd to acrv ops with more than 30 psgr seats excp 24 hr PPR call amgr 252-446-7057.

AIRPORT MANAGER: 252-446-7057

WEATHER DATA SOURCES: ASOS 118.875 (252) 446-0732.

COMMUNICATIONS: CTAF/UNICOM 123.05

RCO 122.2 (RALEIGH RADIO)

Ⓜ WASHINGTON CENTER APP/DEP CON 123.85

CLEARANCE DELIVERY PHONE: For CD if una to ctc on FSS freq, ctc Washington ARTCC at 703-771-3587.

AIRSPACE: CLASS E svc 1300-2300Z; other times CLASS G.

RADIO AIDS TO NAVIGATION: NOTAM FILE RDU.

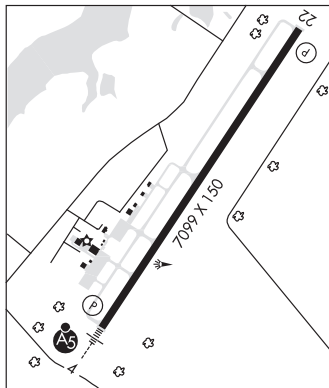
TAR RIVER (VL) (H) VORTAC 117.8 TYI Chan 125 N35°58.60' W77°42.22' 237° 11.7 NM to fld. 73/5W.

VOR unusable:

253°-257° byd 40 NM

299°-318° byd 40 NM

ILS 108.3 I-RWI Rwy 04. Class IA. Unmonitored.



ROVDY N35°43.99' W80°29.37' NOTAM FILE RUQ.

CHARLOTTE

NDB (LOMW) 275 RU 202° 5.4 NM to Mid-Carolina Rgnl. 700/6W.

L-25D, 36F

## ROXBORO

RALEIGH RGNL AT PERSON CO (TDF)(KTDF) 6 S UTC-5(-4DT) N36°17.08' W78°59.08'

WASHINGTON

609 B NOTAM FILE TDF

H-9C, 12H, L-26J, 36G

RWY 06-24: H6005X100 (ASPH) S-45, D-68 MIRL

IAP

RWY 06: MALSR. PAPI(P4L)—GA 3.0° TCH 41'. Thld dsplcd 303'.

Trees.

RWY 24: REIL. PAPI(P2L)—GA 3.0° TCH 44'. Trees.

SERVICE: FUEL 100LL, JET A1+ LGT REIL Rwy 24; MIRL Rwy 06-24 opr SS-SR; to actvt otr times and actvt MALSR Rwy 06; PAPI Rwy 06 &amp; 24—CTAF.

AIRPORT REMARKS: Attended 1400-2200Z. Arprt unattended Thanksgiving and Christmas. For svc after hrs call 615-351-9845. Deer and birds on and in/ovr arprt. No line of sight btn rwy ends. Concrete helipad adjacent and NE of main apron, unlighted, VFR only.

AIRPORT MANAGER: 336-364-1111

WEATHER DATA SOURCES: AWOS-3 126.725 (336) 364-1651.

COMMUNICATIONS: CTAF/UNICOM 122.7

Ⓜ RALEIGH APP/DEP CON 132.35

GCO 119.7 (RALEIGH APCH)

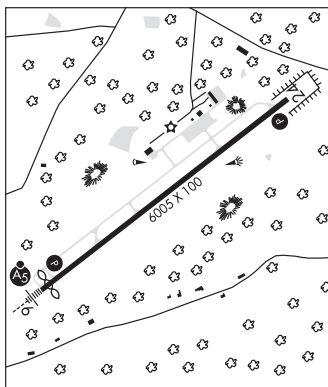
CLEARANCE DELIVERY PHONE: For CD if una via GCO ctc Raleigh Apch at 919-380-3144.

RADIO AIDS TO NAVIGATION: NOTAM FILE DCA.

SOUTH BOSTON (L) (L) VORTAC 110.4 SBV Chan 41 N36°40.50' W79°00.87' 181° 23.4 NM to fld. 520/5W.

PERSON NDB (MHW/LOM) 220 HUR N36°14.00' W79°03.95' 060° 5.0 NM to fld. 614/8W. NOTAM FILE TDF.

ILS/DME 108.7 I-TDF Chan 24 Rwy 06. Class IB. LOM PERSON NDB. ILS/DME unmonitored.



## RUTHERFORD CO/MARCHMAN FLD (See RUTHERFORDTON on page 347)