

## WILLIAMSTON

**MARTIN CO** (MCZ)(KMCZ) 6 W UTC-5(-4DT) N35°51.73' W77°10.69'

CHARLOTTE  
H-9C, 12H, L-35C  
IAP

75 B NOTAM FILE RDU

**RWY 03-21:** H5000X75 (ASPH) S-21 MIRL

**RWY 03:** PAPI(P2L)—GA 3.0° TCH 35'. Road.

**RWY 21:** PAPI(P2L)—GA 3.0° TCH 24'. Road.

**SERVICE:** FUEL 100LL, JET A1 LGT PAPI Rwy 03 and 21 opr cont. Rwy end 03 VGSI OTS indef. MIRL Rwy 03-21 dusk to dawn; to change intensity—CTAF.

**AIRPORT REMARKS:** Attended 1300-2200Z†. For svc after hrs call 252-799-8718 or 252-217-4023. Deer on and invof arpt. 100LL and Jet A has 24 hr self svc with credit card. Rwy end 03 and 21 markings faded. Rwy 03 has 10-15 ft drop off 70 ft fm cntrln both sides.

**AIRPORT MANAGER:** 252-792-1971

**WEATHER DATA SOURCES:** AWOS-3P 118.65 (252) 802-4261.

**COMMUNICATIONS:** CTAF/UNICOM 122.8

® WASHINGTON CENTER APP/DEP CON 123.85

**CLEARANCE DELIVERY PHONE:** For CD ctc Washington ARTCC at 703-771-3587.

**RADIO AIDS TO NAVIGATION:** NOTAM FILE RDU.

**TAR RIVER (VL) (H) VORTAC** 117.8 TYI Chan 125 N35°58.60' W77°42.22' 110° 26.5 NM to fld. 73/5W.

VOR unusable:

253°-257° byd 40 NM

299°-318° byd 40 NM



**WILMINGTON INTL** (ILM)(KILM) P (AF) 3 NE UTC-5(-4DT) N34°16.27' W77°54.17'

CHARLOTTE  
H-9C, L-35B  
IAP, DIAP, AD

32 B LRA Class I, ARFF Index B NOTAM FILE ILM

**RWY 06-24:** H8016X150 (ASPH-GRVD) S-75, D-160, 2S-175, 2D-275 PCN 78 F/B/W/T HIRL

**RWY 06:** REIL. PAPI(P4R)—GA 3.0° TCH 57'. RVR-TR

**RWY 24:** MALSR. PAPI(P4L)—GA 3.0° TCH 48'. RVR-TR

**RWY 17-35:** H7754X150 (ASPH-GRVD) S-60, D-185, 2S-175, 2D-300 PCN 61 F/B/W/T HIRL

**RWY 17:** REIL. PAPI(P4L)—GA 3.0° TCH 50'. RVR-R Thld dsplcd 350'.

**RWY 35:** MALSR. PAPI(P4L)—GA 3.0° TCH 36'. RVR-T Thld dsplcd 400'.

**RUNWAY DECLARED DISTANCE INFORMATION**

**RWY 06:** TORA-8016 TODA-8016 ASDA-8016 LDA-8016

**RWY 17:** TORA-7754 TODA-7754 ASDA-6954 LDA-6604

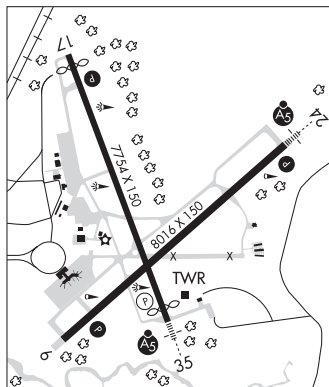
**RWY 24:** TORA-8016 TODA-8016 ASDA-8016 LDA-8016

**RWY 35:** TORA-7754 TODA-7754 ASDA-7604 LDA-7204

**SERVICE:** S4 FUEL 100LL, JET A, A+ OX 1, 2, 3, 4 LGT Actvt MALSR Rwy 24 and 35; REIL Rwy 06 and 17; PAPI Rwy 06, 17, 24; HIRL Rwy 06-24 and 17-35; and all twy lgts—CTAF. **MILITARY—FUEL** A, A+ (C910-763-4691.) (NC-100LL)

**AIRPORT REMARKS:** Attended continuously. Acft taxiing from south ramp obtain ATC clnc prior to crossing Rwy 17-35 1100-0400Z†. Traffic pattern alt 1000' AGL reciprocating engine, 1500' AGL tbtj/jet. OHD: 5 mile initial 2500 ft AGL, break 2000 ft AGL. Tower calls drctn of break. Carrier break NA. Flight Notification Service (ADCUS) avbl.

**AIRPORT MANAGER:** 910-341-4333



CONTINUED ON NEXT PAGE

CONTINUED FROM PRECEDING PAGE

WEATHER DATA SOURCES: ASOS (910) 254-5254

COMMUNICATIONS: CTAF 119.9 ATIS 124.975 UNICOM 122.95

RCO 122.6 (RALEIGH RADIO)

RCO 122.1R 117.0T (RALEIGH RADIO)

Ⓡ APP/DEP CON 135.75 317.425 (344°-163°) 118.25 284.65 (164°-343°) (1100-0400Z‡)

Ⓡ WASHINGTON CENTER APP/DEP CON 135.75 317.425 (0400-1100Z‡)

TOWER 119.9 239.3 (1100-0400Z‡) GND CON 121.9 348.6

CLEARANCE DELIVERY PHONE: For CD if una to ctc on FSS freq, ctc Washington ARTCC at 703-771-3587.

AIRSPACE: CLASS D svc 1100-0400Z‡; other times CLASS E.

TRSA svc ctc APP CON within 20 NM

RADIO AIDS TO NAVIGATION: NOTAM FILE ILM.

(H) (H) VORTAC 117.0 ILM Chan 117 N34°21.10' W77°52.46' 203° 5.0 NM to fld. 29/7W.

VOR portion unusable:

051°-185°

164°-051° blo 17,500'

186°-229° blo 3,000'

230°-315° byd 5 NM blo 17,500'

316°-050° blo 8,000'

TACAN DME unusable:

015°-305° byd 30 NM blo 2,500'

TACAN AZIMUTH unusable:

129°-160° byd 30 NM blo 2,500'

WILZE NDB (LOMW) 205 GM N34°20.24' W77°48.71' 239° 6.0 NM to fld. 28/10W.

AIRLI NDB (LOMW) 281 IL N34°11.48' W77°51.98' 349° 5.1 NM to fld. 12/10W.

ILS/DME 109.95 I-GNM Chan 36(Y) Rwy 06. Class IE.

ILS 111.55 I-GMX Rwy 24. Class IIE. LOM WILZE NDB.

ILS 110.3 I-ILM Rwy 35. Class IT. LOM AIRLI NDB.

WILSON INDUSTRIAL AIR CENTER (W03) 3 N UTC-5(-4DT) N35°46.22' W77°58.19'

CHARLOTTE

160 B NOTAM FILE RDU

L-35B, 36G

RWY 03-21: H4500X150 (ASPH) S-20 MIRL

IAF

RWY 03: REIL. Trees.

RWY 21: REIL. Trees.

RWY 15-33: H4499X150 (ASPH) S-20

RWY 15: Trees.

RWY 33: Trees.

RWY 09-27: H4498X150 (ASPH) S-20

RWY 09: Trees.

RWY 27: Trees.

SERVICE: FUEL 100LL, JET A1+ LGT ACTIVATE REIL Rwy 03 and Rwy

21; MIRL Rwy 03-21-CTAF. Rwy 03-21 REIL ots indef.

AIRPORT REMARKS: Attended 1300-2300Z‡. For svc after hrs call

252-292-8443. Rwy 09-27 rough sfc due to excessive crack sealant.

Deer on and invof arpt. No line of sight btn rwy ends. Rwy 15-33 lateral, transverse, block cracking, fod, failed sealant.

AIRPORT MANAGER: 252-399-2489

COMMUNICATIONS: CTAF/UNICOM 123.0

ROCKY MOUNT RCO 122.2 (RALEIGH RADIO)

Ⓡ WASHINGTON CENTER APP/DEP CON 123.85

CLEARANCE DELIVERY PHONE: For CD ctc Washington ARTCC at 703-771-3587.

RADIO AIDS TO NAVIGATION: NOTAM FILE RDU.

TAR RIVER (VL) (H) VORTAC 117.8 TYI Chan 125 N35°58.60' W77°42.22' 231° 17.9 NM to fld. 73/5W.

VOR unusable:

253°-257° byd 40 NM

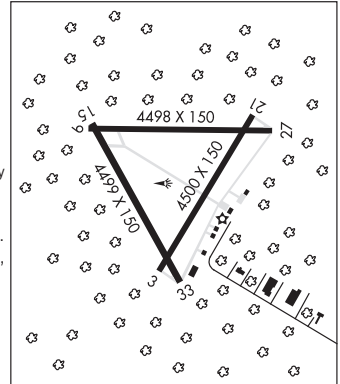
299°-318° byd 40 NM

KINSTON (L) (L) VORTAC 117.5 ISO Chan 122 N35°22.26' W77°33.50' 325° 31.3 NM to fld. 70/5W. NOTAM FILE ISO.

VOR unusable:

Blw 5,000'

Byd 10NM



WILSON'S (See HICKORY on page 317)

WILZE N34°20.24' W77°48.71' NOTAM FILE ILM.

CHARLOTTE

NDB (LOMW) 205 GM 239° 6.0 NM to Wilmington Intl. 28/10W.