

LUIS MUNOZ MARIN INTL (SJU)/(TJSJ) P 3 SE UTC-4 N18°26.36' W66°00.13'

PUERTO RICO-VIRGIN ISLANDS

10 B LRA Class I, ARFF Index D NOTAM FILE TJSJ

H-2G, L-5C, 6G, A-3G

RWY 08-26: H10400X193 (ASPH-GRVD) S-100, D-200, 2D-350

IAP, AD

PCN 86 R/C/W/T HIRL

RWY 08: MALSR. PAPI(P4L)—GA 3.0° TCH 70'. Thld dsplcd 400'.

Tree. Rgt tfc.

RWY 26: REIL. Thld dsplcd 400'. Tree.

RWY 10-28: H8016X150 (CONC-GRVD) S-100, D-200, 2D-350

PCN 68 R/C/W/T HIRL

RWY 10: MALSR. PAPI(P4L)—GA 3.0° TCH 53'. Tree. Rgt tfc.

RWY 28: PAPI(P4L)—GA 3.0° TCH 53'. Trees.

RUNWAY DECLARED DISTANCE INFORMATION

RWY 08: TORA-10400 TODA-10400 ASDA-9784 LDA-9384

RWY 10: TORA-8016 TODA-8016 ASDA-8016 LDA-8016

RWY 26: TORA-10400 TODA-10400 ASDA-10308 LDA-9908

RWY 28: TORA-8016 TODA-8016 ASDA-8016 LDA-8016

SERVICE: S4 FUEL 100, JET A+, A++

AIRPORT REMARKS: Attended continuously. FBO/Gnd handler must submit

72 hrs PPR for all mil acft by phone to 787-253-0979. Twy S btn

Twy S2 and Twy S5 clsd, lgtd and barricaded. Twy H btn Twy C and

Twy H3 is clsd. Please, contact arpt ops at 787-253-0979 for further

details and restrictions. Engine run-ups prohibited on gates area. Acft

180° turns on twys rqrs OPS coord. Apron 12 avbl for general aviation acft only. Twy J btn J1 and J5 (not incl J5) clsd to

acft with greater than 118' wingspan. All pvt and corporate acft must ctc arpt OPS, before arrival, for FBO's and ground

handling info at 787-253-0979. Ldg fee. Flight Notification Service (ADCUS) avbl.

MILITARY REMARKS: RSTD Inbound acft originating from OCONUS with a PPR for Muniz ANGB apn must clear Customs and

Border Protection at civ side. Prior coord must be made with ANG AMOPS, phone 740-9629 at least one business day

prior to arrival. ANG Base OPS 1130-2000Z Mon-Fri, clsd wkend and hol.

AIRPORT MANAGER: (787) 289-7240

WEATHER DATA SOURCES: ASOS (787) 791-6200 LLWAS. TDWR.

COMMUNICATIONS: D-ATIS 125.8 UNICOM 123.0

Ⓡ **SAN JUAN APP/DEP CON** 119.4 (WEST & SW) 120.9 (NORTH & EAST)

SAN JUAN TOWER 132.05 **GND CON** 121.9 **PRE TAXI CLNC/CLNC DEL** 126.4

CPDLC (LOGON KUSA)

PDC

AIRSPACE: CLASS C svc ctc **APP CON.**

RADIO AIDS TO NAVIGATION: NOTAM FILE TJSJ.

SAN JUAN (H) (H) VORTACW 114.0 SJU Chan 87 N18°26.78' W65°59.37' at fld. 6/11W.

VOR unusable:

120°-164° byd 10 NM blo 9,000'

165°-260° byd 28 NM blo 5,000'

TACAN AZIMUTH unusable:

120°-164° byd 10 NM blo 9,000'

165°-260° byd 28 NM blo 5,000'

DME unusable:

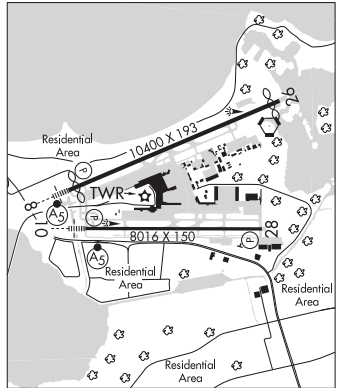
120°-164° byd 10 NM blo 9,000'

165°-260° byd 28 NM blo 5,000'

PATTY NDB (MHW/LOM) 330 SJ N18°24.53' W66°05.37' 081° 5.3 NM to fld. 67/11W. NOTAM FILE SJU.

ILS 110.3 I-SJU Rwy 08. Class IA. LOM PATTY NDB. Glideslope unusable blo 180'.

ILS/DME 109.7 I-CLA Chan 34 Rwy 10. Class IB.



SAN JUAN N18°26.78' W65°59.37' NOTAM FILE TJSJ.

PUERTO RICO-VIRGIN ISLANDS

(H) (H) VORTACW 114.0 SJU Chan 87 at Luis Muñoz Marín Intl. 6/11W.

H-2F, L-5C, 6G

VOR unusable:

120°-164° byd 10 NM blo 9,000'

165°-260° byd 28 NM blo 5,000'

TACAN AZIMUTH unusable:

120°-164° byd 10 NM blo 9,000'

165°-260° byd 28 NM blo 5,000'

DME unusable:

120°-164° byd 10 NM blo 9,000'

165°-260° byd 28 NM blo 5,000'