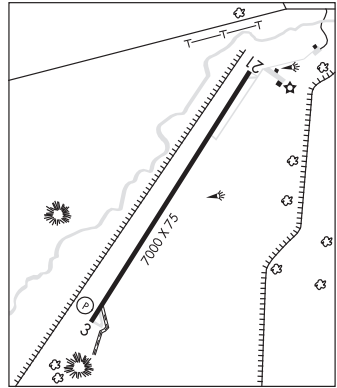


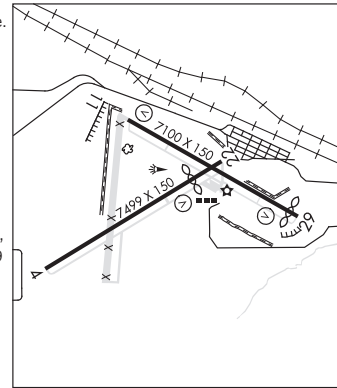
**WINDOW ROCK** (RQE)(KRQE) 1 S UTC-7 N35°39.12' W109°04.04'  
 6742 B NOTAM FILE RQE  
**RWY 03-21:** H7000X75 (ASPH) S-30, D-45, 2D-75 MIRL  
**RWY 03:** REIL. PAPI(P2L)—GA 3.0° TCH 42'. Fence.  
**RWY 21:** REIL. Rgt tfc.  
**SERVICE:** LGT ACTVT REIL Rwy 03 and 21; MIRL Rwy 03-21—CTAF.  
**AIRPORT REMARKS:** Attended Mon-Fri 1500-0000Z. Gate access code 2476. Twy turn—a-round at Rwy 03 thr unusable due to large cracks, ruts, holes and loose aggregate. Hills and cliffs all quadrants. Turbulence may be experienced in/ovt arpt.  
**AIRPORT MANAGER:** 928-871-6466  
**WEATHER DATA SOURCES:** ASOS 118.325 (928) 810-7235.  
**COMMUNICATIONS:** CTAF/UNICOM 122.8  
 (R) **ALBUQUERQUE CENTER APP/DEP CON** 124.325  
**CLEARANCE DELIVERY PHONE:** For CD etc Albuquerque ARTCC at 505-856-4861.  
**RADIO AIDS TO NAVIGATION:** NOTAM FILE GUP.  
**GALLUP (VH) (H) VORTAC** 115.1 GUP Chan 98 N35°28.56' W108°52.36' 304° 14.2 NM to fld. 7053/14E.  
 VOR unusable:  
 298°-306° byd 40 NM

DENVER  
 H-4K, L-8H  
 IAP



**WINSLOW-LINDBERGH RGNL** (INW)(KINW) 1 W UTC-7 N35°01.31' W110°43.35'  
 4941 B NOTAM FILE INW MON Airport  
**RWY 04-22:** H7499X150 (ASPH) S-50, D-80, 2S-102, 2D-125  
 MIRL 0.8% up SW  
**RWY 22:** REIL. VASI(V4L)—GA 3.0° TCH 40'. Thld dsplcd 1262'. Tree.  
**RWY 11-29:** H7100X150 (ASPH) S-60, D-70, 2S-89, 2D-110 MIRL  
 0.4% up NW  
**RWY 11:** REIL. VASI(V4L)—GA 3.0° TCH 36'. Tree. Rgt tfc.  
**RWY 29:** VASI(V4L)—GA 3.0° TCH 28'. Thld dsplcd 344'. Fence.  
**RUNWAY DECLARED DISTANCE INFORMATION**  
**RWY 04:** LDA-7499  
**RWY 11:** LDA-7100  
**RWY 22:** LDA-6236  
**RWY 29:** LDA-6756  
**SERVICE:** FUEL 100LL, JET A LGT ACTIVATE REIL Rwy 11 and Rwy 22, MIRL Rwy 04-22 and Rwy 11-29—CTAF. VASI Rwy 11 and Rwy 29 opr continuously.  
**AIRPORT REMARKS:** Attended Mon-Fri 1400-0100Z, Sat-Sun 1500-0000Z. After hrs svc call 928-587-2630. Rwy 11-29 outer 35' on each side extremely rough due to vegetation growing in the numerous cracks. Southwest corner of Forest Service ramp clsd. Landing fee for commercial aircraft. Overnight tiedown fee.  
**AIRPORT MANAGER:** (928) 289-2422  
**WEATHER DATA SOURCES:** ASOS 118.875 (928) 289-0134.  
**COMMUNICATIONS:** CTAF/UNICOM 122.8  
**RCO** 122.6 (PRESCOTT RADIO)  
 (R) **ALBUQUERQUE CENTER APP/DEP CON** 127.675  
**CLEARANCE DELIVERY PHONE:** For CD if una to ctc on FSS freq, etc Albuquerque ARTCC at 505-856-4561.

PHOENIX  
 H-4K, L-8G  
 IAP



CONTINUED ON NEXT PAGE

CONTINUED FROM PRECEDING PAGE

AIRSPACE: CLASS E svc 1100-0600Z; other times CLASS G.

RADIO AIDS TO NAVIGATION: NOTAM FILE INW.

(VH) (H) VORTACW 112.6 INW Chan 73 N35°03.70' W110°47.70' 110° 4.3 NM to fld. 4913/14E.

VOR unusable:

- 015°-021° byd 40 NM
- 022°-032° byd 40 NM blo 31,000'
- 033°-043° byd 40 NM blo 13,000'
- 033°-043° byd 96 NM
- 044°-050° byd 40 NM
- 073°-077° byd 40 NM
- 120°-160° byd 40 NM
- 161°-171° byd 40 NM blo 16,000'
- 161°-171° byd 48 NM
- 172°-185° byd 40 NM blo 12,000'
- 172°-185° byd 63 NM
- 186°-191° byd 40 NM
- 192°-202° byd 40 NM blo 10,000'
- 192°-202° byd 62 NM
- 203°-215° byd 40 NM blo 14,000'
- 203°-215° byd 77 NM
- 216°-281° byd 40 NM
- 282°-292° byd 40 NM blo 18,000'
- 302°-307° byd 40 NM

**YUMA MCAS/YUMA INTL** (NYL)(KKNYL) MIL/CIV N 3 S UTC-7 N32°39.39' W114°36.36'

213 B TPA—See Remarks AOE Class I, ARFF Index A NOTAM FILE NYL

PHOENIX  
H-4J, L-5A  
IAP, DIAP, AD

**RWY 03L-21R:** H13300X200 (CONC) S-103, D-200, 2D-400

PCN 71 R/C/W/T HIRL

**RWY 03L:** REIL. PAPI(P4L)—GA 3.0° TCH 53'. Rgt tfc.

**RWY 21R:** MALSR. PAPI(P4L)—GA 3.0° TCH 50'.

**RWY 03R-21L:** H9240X150 (ASPH-CONC) S-162, D-200, 2D-400

PCN 59 F/B/W/T HIRL 0.4% down SW

**RWY 03R:** REIL. PAPI(P4L)—GA 3.0° TCH 50'. Antenna. Rgt tfc.

**RWY 21L:** REIL. PAPI(P4L)—GA 3.0° TCH 51'. Road.

**RWY 08-26:** H6146X150 (ASPH) S-63, D-137, 2D-206

PCN 33 F/B/W/T HIRL 0.3% up E

**RWY 08:** Road. Rgt tfc.

**RWY 26:** Road.

**RWY 17-35:** H5710X150 (ASPH-CONC) S-72, D-171, 2D-255

PCN 33 F/B/W/T HIRL

**RWY 17:** VASI(V4L)—GA 3.0° TCH 40'. Tree. Rgt tfc.

**RWY 35:** REIL. Brush.

**RUNWAY DECLARED DISTANCE INFORMATION**

**RWY 03L:**TORA-13300 TODA-13300 ASDA-13300 LDA-13300

**RWY 03R:**TORA-9240 TODA-9240 ASDA-9240 LDA-9240

**RWY 08:**TORA-6146 TODA-6146 ASDA-6146 LDA-6146

**RWY 17:**TORA-5710 TODA-5710 ASDA-5710 LDA-5710

**RWY 21L:**TORA-9240 TODA-9240 ASDA-9240 LDA-9240

**RWY 21R:**TORA-13300 TODA-13300 ASDA-13300 LDA-13300

**RWY 26:**TORA-6146 TODA-6146 ASDA-6146 LDA-6146

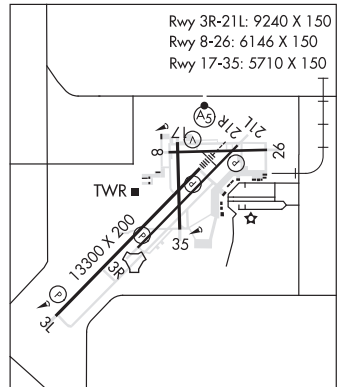
**RWY 35:**TORA-5710 TODA-5710 ASDA-5710 LDA-5710

**ARRESTING GEAR/SYSTEM**

**RWY 03L** HOOK E28(B) (3495 FT)

**RWY 03R** HOOK E28(B) (2725 FT)

**SERVICE:** S2 FUEL 100, JET A, A+ OX 1, 2, 3, 4



HOOK E28(B) (1699 FT) **RWY 21R**  
HOOK E28(B) (1675 FT) **RWY 21L**

CONTINUED ON NEXT PAGE