

PANACA

LINCOLN CO (1L1) 2 W UTC-8(-7DT) N37°47.25' W114°25.19'

4831 B TPA—5631(800) NOTAM FILE RNO

RWY 17-35: H4606X60 (ASPH) S-12.5 MIRL 0.7% up N

RWY 17: Hill.

SERVICE: FUEL 100LL LGT ACTVT MIRL Rwy 17-35—CTAF.

AIRPORT REMARKS: Unattended. Rwy 17 sfc marks weathered. Rwy 35 sfc marks weathered.

AIRPORT MANAGER: (702) 449-2418

COMMUNICATIONS: CTAF/UNICOM 122.8

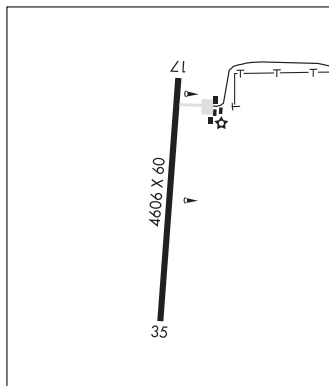
CLEARANCE DELIVERY PHONE: For CD ctc Nellis App at 702-652-4172.

RADIO AIDS TO NAVIGATION: NOTAM FILE RNO.

WILSON CREEK (VH) (H) VORTAC 116.3 ILC Chan 110 N38°15.01'
W114°23.65' 167° 27.8 NM to fld. 9318/16E.

LAS VEGAS

L-9B



PERKINS FLD (See OVERTON on page 400)

RENO

RENO/STEAD (RTS)(KRTS) P (ARNG) 10 NW UTC-8(-7DT) N39°40.09' W119°52.59'

5050 B TPA—See Remarks NOTAM FILE RTS MON Airport

RWY 14-32: H9000X150 (ASPH-GRVD) PCN 64 R/B/X/T HIRL

RWY 14: REIL. PAPI(P4L)—GA 3.0° TCH 40'.

RWY 32: MALSR. PAPI(P4L)—GA 3.0° TCH 39'. Thld dsplcd 1200'.

Rgt tfc.

RWY 08-26: H7608X150 (ASPH-GRVD) PCN 64 R/B/X/T HIRL

0.8% up E

RWY 08: REIL. PAPI(P4L)—GA 4.0° TCH 45'.

RWY 26: REIL. PAPI(P4L)—GA 3.0° TCH 46'. Rgt tfc.

RUNWAY DECLARED DISTANCE INFORMATION

RWY 08: TORA-6956 TODA-6956

LDA-6956

RWY 26:

LDA-7294

RWY 32:

LDA-7800

SERVICE: S4 FUEL 100LL, JET A OX 1, 3 LGT ACTVT MALSR Rwy

32; REIL Rwy 14; HIRL Rwy 14-32—CTAF. PAPI Rwy 32 on consly.

Rwy 14 PAPI OTS indefly. Rwy 08 PAPI unusbl byd 5 degs right of cntrln.

MILITARY— JASU 1(MD-3M) 2(A-1) FUEL J4 (Mil) A (avbl

1600-0030Z‡ Mon-Fri, C775-972-5540. OT fee \$50. Emerg svc

C775-530-8743.) (NC-100LL) FLUID HPOX

AIRPORT REMARKS: Attended Mon-Fri 1500-0030Z‡. Fuel avbl H24 —

775-530-7164 or 122.775. Parachute Jumping. Rng hel ops invof arpt; balloon ops NW quad; tanker and fire ops invof

arpt durg fire season. TPA—6246(1200) heavy/high performance acct. Avoid overflt of housing areas east and west of

afld. Cold temperature airport. Altitude correction required at or below -16C.

AIRPORT MANAGER: 775-328-6573

WEATHER DATA SOURCES: AWOS-3 135.175 (775) 677-0589.

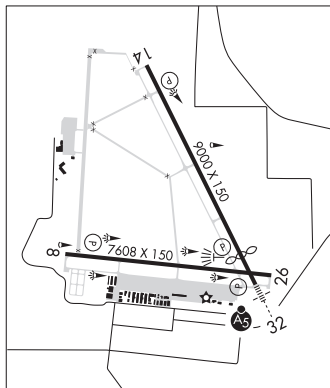
COMMUNICATIONS: CTAF/UNICOM 122.7

® NORCAL APP/DEP CON 126.3 (916-361-6874)

SAN FRANCISCO

H-3B, L-9A, 11A

IAP, AD



CONTINUED ON NEXT PAGE

