

CONTINUED FROM PRECEDING PAGE

RADIO AIDS TO NAVIGATION: NOTAM FILE ABQ.

(VH) (H) VORTACW 113.2 ABQ Chan 79 N35°02.63' W106°48.98' 079° 10.3 NM to fld. 5749/13E.

TACAN AZIMUTH unusable:

040°-055° byd 30 NM blo 15,000'

VOR unusable:

039°-078° byd 40 NM

111°-133° byd 40 NM blo 14,000'

211°-216° byd 40 NM blo 9,000'

211°-216° byd 52 NM

257°-262° byd 40 NM blo 9,000'

257°-262° NM byd 63 NM

271°-280° byd 40 NM blo 13,300'

271°-280° byd 49 NM

281°-327° byd 40 NM blo 11,000'

281°-327° byd 63 NM

327°-333° byd 40 NM blo 11,500'

ILS 111.5 I-BZY Rwy 03. Class IE.

ILS/DME 111.9 I-SPT Chan 56 Rwy 08. Class IE.

ASR

COMM/NAV/WEATHER REMARKS: PMSV OTS UFN—ltd blw 10000 ft, 010-070. PTD OTS UFN.

DOUBLE EAGLE II (AEG)(KAEG) 7 NW UTC-7(-6DT) N35°08.69' W106°47.71'

5837 B NOTAM FILE AEG

RWY 04-22: H7398X100 (ASPH-PFC) S-30 PCN 16 F/C/X/T MIRL

0.4% up SW

RWY 04: PAPI(P4L)—GA 3.0° TCH 52'.

RWY 22: MALSRL Rgt tfc.

RWY 17-35: H5983X100 (ASPH-PFC) S-30 PCN 11 F/D/X/T MIRL

RWY 17: REIL. PAPI(P4L)—GA 3.0° TCH 52'.

RWY 35: REIL. Rgt tfc.

SERVICE: S4 FUEL 100LL, JET A1 OX 1, 3 LGT ACTVT MALSRL Rwy

22; REIL Rwy 17 and 35; PAPI Rwy 04 and 17; MIRL Rwy 04-22 and 17-35—CTAF.

AIRPORT REMARKS: Attended 1300-0100Z±. 100LL avbl 24 hrs self svc with major credit card, \$150 call out fee for JET A1. For attendant after hrs call 505-884-4530. Wildlife on and invof arpt. Live fire range 1.6 NM west of the AER 04. Avoidance advised.

AIRPORT MANAGER: 505-244-7888

WEATHER DATA SOURCES: AWOS-3PT (505) 842-2009

COMMUNICATIONS: CTAF 120.15 ATIS 119.025

Ⓡ **ALBUQUERQUE APP/DEP CON** 127.4

TOWER 120.15 (1300-0500Z±) **GND CON** 121.625

CLNC DEL 124.8 (when twr clsd)

AIRSPACE: CLASS D svc 1300-0500Z±; other times CLASS G.

RADIO AIDS TO NAVIGATION: NOTAM FILE ABQ.

ALBUQUERQUE (VH) (H) VORTACW 113.2 ABQ Chan 79 N35°02.63' W106°48.98' 357° 6.1 NM to fld. 5749/13E.

TACAN AZIMUTH unusable:

040°-055° byd 30 NM blo 15,000'

VOR unusable:

039°-078° byd 40 NM

111°-133° byd 40 NM blo 14,000'

211°-216° byd 40 NM blo 9,000'

211°-216° byd 52 NM

257°-262° byd 40 NM blo 9,000'

257°-262° NM byd 63 NM

271°-280° byd 40 NM blo 13,300'

271°-280° byd 49 NM

281°-327° byd 40 NM blo 11,000'

281°-327° byd 63 NM

327°-333° byd 40 NM blo 11,500'

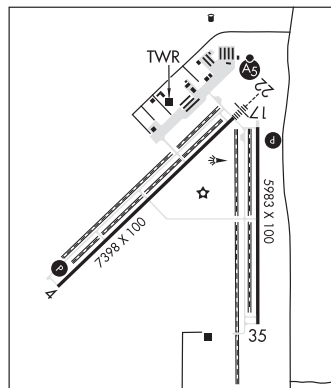
DUDLE NDB (LOMw) 351 AE N35°13.04' W106°42.77' 212° 5.9 NM to fld. 5455/11E. NOTAM FILE AEG.

ILS 110.1 I-AEG Rwy 22. Class IT. LOM DUDLE NDB. LOM unmonitored. Unmonitored.

ALBUQUERQUE

H-4K, L-8I

IAP, AD



ANDREW OTHOLE MEML (See ZUNI on page 455)